

Exam Name:	Oracle9i Forms Developer: New Features		
Exam Type:	Oracle		
Exam Code:	1Z0-140	Total Questions	129

Question: 1

The JDAPI program that you are running throws JdapiIllegalStateException. What is a possible cause for this exception?

- A. The remove() method of JDAPI iterators has failed.
- B. The compile() method of the PlsqlLibrary class has failed.
- C. The underlying Forms code is failing to create Forms objects.
- D. The program may be calling a method on a Forms object that has been destroyed.

Answer: D

Question: 2

Your manager asks you to maintain a log of the IP addresses of all sessions that run your company's Forms applications. To accomplish this, you decide to implement session-level Servlet Logging for all users. How do you perform this task?

- A. Add the SERVERURL parameter to the FORMS90.CONF file.
- B. Modify the SERVERURL parameter in the Forms Servlet configuration file.
- C. Define the SERVERURL environment variable in the Forms environment file.
- D. Modify the SERVERURL parameter in the WEB.XML file for the Forms Servlet.
- E. You do not need to do anything; session-level Servlet Logging is performed by default.

Answer: B

Question: 3

You have set the environment variables FORMS90_DATETIME_LOCAL_TZ and FORMS90_TZ_FILE to implement time-zone support, but you have not defined a value for the FORMS90_DATETIME_SERVER_TZ. How do you expect Oracle9i Forms to behave at run time?

- A. A run-error will occur.
- B. FORMS90_DATETIME_SERVER_TZ will be set to GMT.
- C. FORMS90_DATETIME_SERVER_TZ will be set to the database server time-zone region.
- D. FORMS90_DATETIME_SERVER_TZ will be set to the value of FORMS90_DATETIME_LOCAL_TC.

Answer: B

Question: 4

What do the CFAPI and JDAPI utilities develop?

- A. Forms modules only.
- B. Forms modules and object libraries only.
- C. Forms modules and menu modules only.
- D. Forms modules, menu modules, object libraries.
- E. Forms modules, menu modules, object libraries, and PL/SQL libraries.

Answer: D

Question: 5

Which statement about the Java Design-Time API (JDAPI) is true?

- A. It is built on top of the C Forms API.
- B. It replaces the C Forms API (CFAPI) that was available in Forms 6i.
- C. It enables invocation of the C Forms API from a Java program.
- D. It is unrelated to the C Forms API because its functionality is completely different.

Exam Name:	Oracle9i Forms Developer: New Features		
Exam Type:	Oracle		
Exam Code:	1Z0-140	Total Questions	129

Answer: A

Question: 6

Which statement best describes what JavaBeans enable you to do?

- A. Change the function and appearance of Forms items such as check boxes and radio buttons.
- B. Integrate Java code from the middle tier and from external Web services.
- C. Enable Forms to make use of Java code in the database by calling a Java stored procedure.
- D. Extend and customize the functionality of a form by embedding a Java component.

Answer: D

Question: 7

Exhibit:

*****MISSING*****

You migrated an application from Forms 4.5 to Oracle9i/Forms. One of the forms in the application is a registration form for new users of your company's Web site. The exhibit depicts the Layout Editor for this registration form, along with the PL/SQL Editor that shows the When-Validate-Item trigger on the required user_id item.

In this form, the form-level Defer Required Enforcement property is set to Yes to enable users to tab out of the user_id item without entering a value. When this happens, a user ID should be automatically generated.

When you test the upgraded registration form, you notice that the When-Validate-Item trigger does not fire when users leave the user_id item blank, so the automatic generation of user ID does not function. The form worked perfectly in Forms 4.5.

What can you do to resolve the desired functionality without recoding?

- A. Set the form-level Runtime Compatibility Mode property to 4.5 so that the When-Validate-Item trigger fires for null items.
- B. Set the form-level Defer Required Enforcement property to 4.5 so that the When-Validate-Item trigger fires for null items.
- C. This is not possible, you must recode the application.
- D. Set the Runtime Compatibility Mode property on the user_id item to 4.5 so that the When-Validate-Item trigger fires even when user_id is null.
- E. Set the Execution Hierarchy property to After for the When-Validate-Item trigger on the user_id item so that it fires after the user tabs out of the item.

Answer: B

Question: 8

When deploying JavaBeans, when must you digitally sign the JAR file?

- A. When the application does not use JInitiator.
- B. When the JAR file is not included in the ARCHIVE parameter.
- C. When all the actions performed by the JavaBeans are permitted by a Java applet.
- D. When all the actions performed by the JavaBeans are not permitted by a Java applet.

Answer: D

Question: 9

Identify three actions that you could perform in previous version of Forms but that you are unable to perform in Oracle9i/Forms. (Choose three)

- A. Create a sound item.

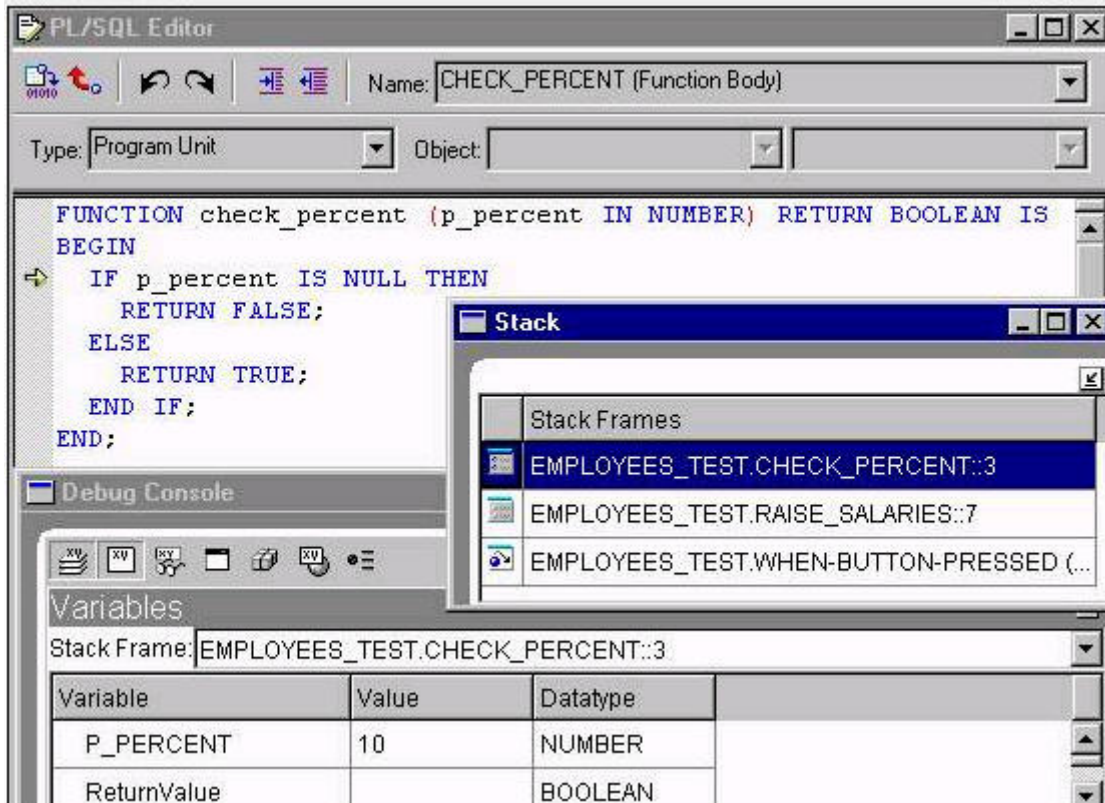
Exam Name:	Oracle9i Forms Developer: New Features		
Exam Type:	Oracle		
Exam Code:	120-140	Total Questions	129

- B. Create menu parameters.
- C. Create a bean area item.
- D. Use middle-tier Java code.
- E. Change the font characteristics of an item.
- F. Start the run-time process from the command line.

Answer: A, B, F

Question: 10

Exhibit:



Which statement is true about the accompanying exhibit?

- A. If you click Step Over, the highlighted subprogram is removed from the Stack panel.
- B. If you click the second line in the Stack panel, the Variables panel changes the show the variables that are defined in the RAISE_SALARIES subprogram.
- C. If you click the second line in the Stack panel and then click Step Into, the debugger steps to the next line of code in the RAISE_SALARIES subprogram.
- D. If you click Go, the CHECK_PERCENT subprogram finishes executing and the debugger steps to the next line of code in the RAISE_SALARIES subprogram.

Answer: B

Question: 11

You are using a hyperlink JavaBean in a form so that users can click the bean area at run time to open your company's Web page. What must you do to make the hyperlink bean functional?

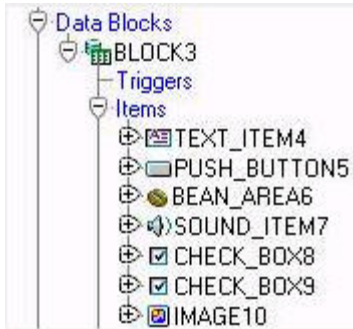
Exam Name:	Oracle9i Forms Developer: New Features		
Exam Type:	Oracle		
Exam Code:	1Z0-140	Total Questions	129

- A. Register the JavaBean and set its properties.
- B. Set the JavaBean's properties and enable its listener.
- C. Register the JavaBean, at either design time or run time.
- D. Register the JavaBean, set its properties, and enable the listener for the event.

Answer: D

Question: 12

You are upgrading a form that was written in Forms 6i. You open the form in the Oracle9i Forms Builder.



The data block of this form is shown in the exhibit as it appears in the object navigator of Forms Builder.

What must you do to this form before it can compile successfully?

- A. Delete the image item.
- B. Delete the sound item.
- C. Convert the check boxes to radio groups.
- D. Recode the population of the image item so that it does not attempt to load images from the operating system.
- E. Use the FBean package to recode the functionality of the bean area item.

Answer: B

Question: 13

You are upgrading an application that was developed using Forms6i. The application was previously deployed using only character mode.

ID	First Name	Last Name	City		
179	Harry dea	Forrest	Albany	NY	US
180	Harry dea	Cage	Poughkeepsie	NY	US
181	Lauren	Hershey	Schenectady	NY	US
182	Lauren	Dench	Buffalo	NY	US
183	Lauren	Altman	Yonkers	NY	US
184	Mary Beth	Roberts	Syracuse	NY	US
185	Matthew	Wright	Lockport	NY	US
186	Meena	Alexande	Buffalo	NY	US
187	Grace	Dvrrie	Schenectady	NY	US
188	Charlotte	Buckley	Schenectady	NY	US

Exam Name:	Oracle9i Forms Developer: New Features		
Exam Type:	Oracle		
Exam Code:	1Z0-140	Total Questions	129

When you test the upgraded application, some of the data in the items appears to be cut off (as shown in the exhibit). When running with Forms6i character mode, the data was displayed completely. Users of the application require that all data be visible without placing the cursor in an item and scrolling to the end of the item.

What is the easiest workaround for this situation?

- A. Use the WIDEN_FIELDS=YES option when upgrading the application.
- B. Set the MAPFONTS applet parameter to Yes when running the application.
- C. Set the RUNTIME_COMPATIBILITY_MODE form module property to a value of 6.0.
- D. Use Oracle Terminal to redefine the display characteristics in the resource file.
- E. Manually increase the item width for all items that do not completely display the data.
- F. Set the FORMS90_OUTPUT environment variable to a value of 6.0 when running the application.

Answer: A

Question: 14

You are running a multiple-form application. The Customer form invokes the Orders form. When the Orders form launches, it displays orders for only the active customer from the Customer form. Forms exchange data with the :GLOBAL.CUSTOMER_ID variable.

The Orders form should query orders for a customer only once after being launched from the Customers form.

Which built-in helps you do this by setting the ONETIME_WHERE property to refer dynamically to the GLOBAL.CUSTOMER_ID?

- A. SET_APPLICATION_PROPERTY
- B. SET_FORM_PROPERTY
- C. SET_BLOCK_PROPERTY
- D. SET_RECORD_PROPERTY

Answer: C

Question: 15

You are using Pluggable Java Components to modify the appearance and behavior of certain input items. These modifications cannot be done in the Property Palette of these items.

Which built-in can you use to accomplish this task?

- A. SET_ITEM_INSTANCE_PROPERTY
- B. FBEAN.SET_PROPERTY
- C. SET_ITEM_PROPERTY
- D. SET_CUSTOM_PROPERTY

Answer: D

Question: 16

For upgrading an application, what are four advantages of using Oracle9i Forms Migration Assistant compared with using Forms Builder? (Choose four)

- A. Converts all obsolete built-ins.
- B. Provides a log file of its messages.
- C. Enables you to upgrade a module in batch mode.
- D. Replaces obsolete items with supported item types.
- E. Increases the likelihood of successful compilation.
- F. Enables you to upgrade multiple modules with one command.

Exam Name:	Oracle9i Forms Developer: New Features		
Exam Type:	Oracle		
Exam Code:	1Z0-140	Total Questions	129

G. Enables you to upgrade directly from any previous version of Forms.

Answer: A, B, C, F

Question: 17

Your company uses a Forms 4.5 application. What is the most efficient way to migrate the application to Oracle9i Forms in a supported fashion?

- A. Upgrade directly to Oracle9i Forms.
- B. Upgrade to Forms 6i, then to Oracle9i Forms.
- C. Upgrade to Forms 5.0, then to Oracle9i Forms.
- D. Upgrade to Forms 5.0, then to Forms 6i, then to Oracle9i Forms.

Answer: B

Question: 18

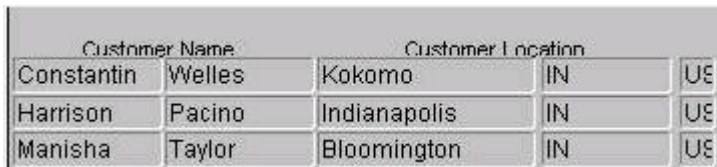
When using JInitiator, what must you do to deploy JavaBeans for Forms applications to ensure that network traffic is minimal?

- A. Put all the required class files in the application server's CODEBASE directory.
- B. Create Java stored procedures in the database for all the required Java classes.
- C. Put all the required class files in any of the application server's directories that are referenced in the server's FORMS90 PATH (or FORMS_PATH).
- D. Put all the required class files in a JAR file in the CODEBASE directory. Include the name of the JAR file in the ARCHIVE parameter.

Answer: D

Question: 19

You are upgrading an application that was developed in Forms 6i. When you test the upgraded application, you notice that the boilerplate text labels overlap the text items (as shown in the exhibit).



The labels appeared correctly when the application was Web-deployed with the Forms 6i Listener.

What is a possible workaround for this problem?

- A. Set the applet parameter MAPFONTS to Yes when running the application.
- B. Use the WIDEN_FIELDS=YES option when upgrading the application.
- C. Set the environment variable FORMS90_MAPPING to the location of the Forms 6i fonts when running the application.
- D. Set the environment variable FORMS90_MAPPING to the location of the Forms 6i fonts when upgrading the application.
- E. There is not easy workaround.
You must modify all the forms where boilerplate text overlaps the text items.

Answer: A

Exam Name:	Oracle9i Forms Developer: New Features		
Exam Type:	Oracle		
Exam Code:	1Z0-140	Total Questions	129

Question: 20

Your task is to write a generic JDAPI program to process a block, an item, or a canvas object. What should you do?

- A. Use the Jdapilterator interface.
- B. Use the object-specified constructors.
- C. Use the JdapiObject interface and JdapiModule abstract type.
- D. Use the clone() method to treat different objects similarly.

Answer: C

Question: 21

What happens when you click Run Form Debug in Forms Builder?

- A. The forms run on your local machine using a debug executable client.
- B. The forms runs a three-tier environment using the application server URL that you specify in runtime preferences.
- C. The form runs in a three-tier environment using the application server URL that you specify in debug preferences.
- D. The form runs in a simulated three-tier environment using an applet viewer that is included with the product to enable debugging.

Answer: B

Question: 22

You are configuring time-zone support for your Oracle9i Forms application, which is accessed by users working across different time zones. You want to ensure that times committed to the database are "US/Central" times.

Which environment variables should you set?

- A. FORMS90_TZFILE only.
- B. FORMS90_DATETIME_LOCAL_TZ only.
- C. FORMS90_DATETIME_SERVER_TZ only.
- D. FORMS90_DATETIME_LOCAL_TZ and FORMS90_TZFILE.
- E. FORMS90_DATETIME_SERVER_TZ and FORMS90_TZFILE.
- F. FORMS90_DATETIME_SERVER_TZ and FORMS90_DATETIME_LOCAL_TZ

Answer: E

Question: 23

The Oracle Forms Migration Assistant can perform which three tasks? (Choose three.)

- A. Convert all obsolete built-ins to equivalent built-ins that are supported in Oracle9i Forms.
- B. Upgrade a Forms 6i object library to an Oracle9i Forms object library.
- C. Migrate a Forms 4.5 Forms module through a supported migration path to Oracle9i Forms.
- D. Create a report object node in a form when converting code for calling reports.
- E. Attach a library to a form that converts RUN_PRODUCT calls to RUN_REPORT_OBJECT.

Answer: B, D, E

Question: 24

A comprehensive knowledge base of time zones (based on information maintained by the United States Naval Observatory) is used to handle time-zone conversion.

Where is this information stored?

Exam Name:	Oracle9i Forms Developer: New Features		
Exam Type:	Oracle		
Exam Code:	1Z0-140	Total Questions	129

- A. DEFAULT.ENV
- B. TIMEZLRG.DAT
- C. FORMSWEB.CFG
- D. REGISTRY.DAT
- E. V\$TIMEZONE_NAMES table

Answer: B

Question: 25

You want to test your forms in a separate window from the browser window containing the Forms applet. What changes in your Forms Builder session would make this possible?

- A. Define a new configuration section [appview] in your FORMSWEB.CFG file. Set the SEPARATEFRAME parameter to True. Select Edit/Preferences in the Forms Builder. Update the Application Server URL to include reference to [appview].
- B. Define a new configuration section [appview] in your FORMSWEB.CFG file. Set the SEPARATEFRAME parameter to True. Select Edit/Preferences in the Forms Builder. Update the Web Browser Location to include reference to [appview].
- C. Define a new configuration section [appview] in your FORMSWEB.CFG file. Set the SEPARATEFRAME parameter to the patch and name of the Java Appletviewer. Select Edit/Preferences in the Forms Builder. Set the Web Browser Location to include reference to [appview].
- D. Define a new configuration section [appview] in your FORMSWEB.CFG file. Set the SEPARATEFRAME parameter to the path and name of the Java Appletviewer. Select Edit/Preferences in the Forms Builder. Set the Application Server URL to include reference to [appview].
- E. Your forms cannot be tested in a separate window from the browser window that contains the Forms applet.

Answer: A

Question: 26

Which three statements are true about the PL/SQL Packages panel in the Forms debugger? (Choose three)

- A. You can select an option button to view server packages.
- B. You can view package only while the run-time process executes PL/SQL.
- C. You can view values of variables that are defined in the package specification.
- D. You can select an option to view packages that have not yet been instantiated.

Answer: A, B, C

Question: 27

Which utility writes boilerplate images of a form to separate image files?

- A. XML2Forms
- B. Forms2XML
- C. XMLValidator
- D. SchemaGenerator

Answer: B

Question: 28

When migrating SQL *Forms 3.0/SQL *Menu 5.0 applications, which three issues may you encounter? (Choose three)

Exam Name:	Oracle9i Forms Developer: New Features		
Exam Type:	Oracle		
Exam Code:	120-140	Total Questions	129

- A. You may need to rename ROOT_WINDOW.
- B. You must delete image items from the forms.
- C. You must use database tables to upgrade menus.
- D. You must delete OLE containers from the forms.
- E. You may need to replace the functionality of OCX items by using JavaBeans.
- F. You may need to set Runtime Compatibility mode to maintain the same behavior.
- G. You may need to change pop-up pages (that are converted to windows) to stacked canvases.

Answer: A, C, G

Question: 29

The servlet log that is shown in the exhibit was started by appending.

```

7/29/02 9:30 AM Started
7/29/02 9:31 AM forms90web: oracle.jsp.runtimev2.JspServlet: init
7/29/02 9:31 AM forms90web: 9.0.2.0.0 Started
7/29/02 9:31 AM forms90web: oracle.forms.servlet.ForasServlet: init
7/29/02 9:31 AM forms90web: ForasServlet init():
  configFileName:  d:\oracle\iDSv2\forms90\server\formsweb.cfg
  testMode:        false
7/29/02 9:31 AM forms90web: oracle.forms.servlet.ListenerServlet: init
7/29/02 9:31 AM forms90web: ListenerServlet init()
7/29/02 9:31 AM forms90web: Foras session <1> started for pgamev-wah { 141
7/29/02 9:31 AM forms90web: Foras session <1> runtime process id = 417
7/29/02 9:31 AM forms90web: Foras session <1>: request processed in 1.292
bytes, returned 8 bytes.
7/29/02 9:31 AM forms90web: Foras session <1>: request processed in 2.744
375 bytes, returned 11,948 bytes.
7/29/02 9:31 AM forms90web: Foras session <1>: request processed in 0.000
40 bytes, returned 2 bytes.
7/29/02 9:31 AM forms90web: Foras session <1>: request processed in 0.000
12 bytes, returned 2 bytes.
7/29/02 9:31 AM forms90web: Foras session <1>: request processed in 0.000
12 bytes, returned 2 bytes.

```

Which string to the URL that starts the application?

- A. /perf
- B. /debug
- C. /session
- D. ?serverURL=/forms90/190servlet/perf
- E. ?serverURL=/forms90/190servlet/debug
- F. ?serverURL=/forms90/190servlet/session

Answer: A

Question: 30

What issue might you encounter when upgrading a client/server Forms 6i application to Oracle9i Forms?

- A. The JAR file must be signed with a new digital signature.
- B. The key mappings that you created for the application must be redefined.
- C. The application logic must be changed because of reduced control over navigation.
- D. The CLASSPATH environment variable must be modified because some classes used in the applications are no longer available.

Answer: D

Question: 31

Exam Name:	Oracle9i Forms Developer: New Features		
Exam Type:	Oracle		
Exam Code:	1Z0-140	Total Questions	129

You run a form from the Forms Builder, and you start an OC4J instance.
Which location describes where the OC4J instance executes?

- A. In the Forms Builder window. After it opens, you can minimize this window if you want.
- B. In a separate window. After it opens, you can close this window if you want.
- C. In the Forms Builder window. After it opens, you can close this window if you want.
- D. In a separate window. After it opens, do not close this window or the OC4J instance aborts.
- E. In a separate window. After it opens, do not minimize this window or the OC4J instance aborts.

Answer: D

Question: 32

What issue might you encounter when upgrading Forms 6i applications that you previously deployed using the Forms Listener?

- A. Forms that use OCX items do not compile.
- B. Fonts are changed to proportional fonts.
- C. When-Mouse-Enter and When-Mouse-Leave triggers no longer function.
- D. You receive a run-time error because of missing classes for a JavaBean.
- E. The application may be using the HOST built-in to call client operating system commands.

Answer: D

Question: 33

When you migrate applications from Forms 4.5 to Oracle9i Forms, which two issues may you encounter? (Choose two)

- A. You may need to remove ROOT_WINDOW.
- B. You must delete image items from the forms.
- C. You must use database tables to upgrade menus.
- D. You must delete OLE containers from the forms.
- E. You may need to replace the functionality of OCX items by using JavaBeans.
- F. You may need to set Runtime Compatibility mode to maintain the same behavior.
- G. You may need to change pop-up pages (that are converted to windows) to stacked canvasses.

Answer: D, E

Question: 34

You are troubleshooting an Oracle9i Forms application in which users report intermittent connection and network performance problems.
Which tool could you use to log information that would help you determine what is causing these problems?

- A. Forms Trace
- B. Servlet Logging
- C. Forms Runtime Diagnostics
- D. Performance Event Collection System

Answer: B

Question: 35

You have enabled debug-level Servlet Logging for the Forms Servlet for all users of an application. At the end of the work day, you want to analyze the log file. Which file do you examine?

Exam Name:	Oracle9i Forms Developer: New Features		
Exam Type:	Oracle		
Exam Code:	1Z0-140	Total Questions	129

- A. SERVER.LOG
- B. APPLICATION.LOG
- C. DEFAULT-WEB-ACCESS.LOG
- D. GLOBAL-APPLICATION.LOG

Answer: B

Question: 36

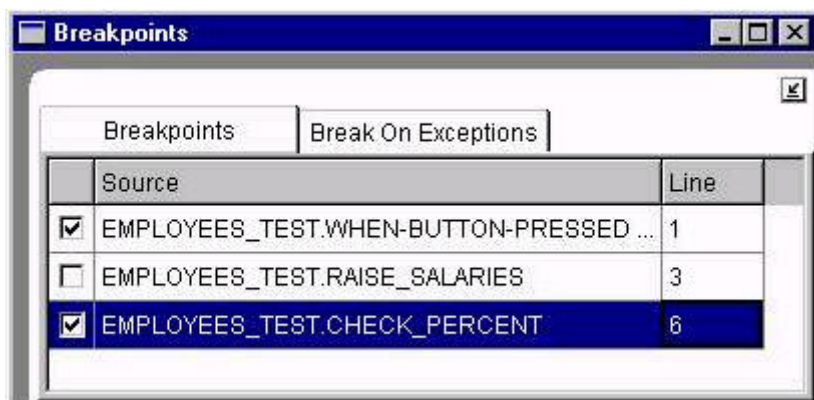
Which two statements are advantages of setting the Forms module's Interaction Mode property to Non-Blocking? (Choose two)

- A. Enables the control blocks of the form to have input items.
- B. Stops the blocks of the form from interacting with each other.
- C. Does not enable users to interact with any block of the form.
- D. Enables users to cancel an LOV during record retrieval if the Filter Before Display property is set to Yes.
- E. Displays on the status bar the number of records fetched by an LOV at any point in time.

Answer: D, E

Question: 37

Exhibit:



Which statement is true about the accompanying exhibit?

- A. If you right-click the highlighted breakpoint, you can change it to a Break on Exception.
- B. The execution of the form is suspended and control passed to the debugger when the run-time form encounters line 3 of the RAISE_SALARIES program unit.
- C. The breakpoint for the CHECK_PERCENT program unit was set before the breakpoint on the RAISE_SALARIES program unit.
- D. If you double-click the highlighted breakpoint, the PL/SQL Editor opens and displays the CHECK_PERCENT program unit.

Answer: D

Question: 38

You are developing a Customer form that invokes an Orders form to display orders for the selected customer. You click Run Form to run the Customers form, and then you press a button to invoke the Orders form for the first displayed customer. You receive an error: FRM-40010 cannot read the form Orders. What should you modify to resolve the error?

Exam Name:	Oracle9i Forms Developer: New Features		
Exam Type:	Oracle		
Exam Code:	1Z0-140	Total Questions	129

- A. CLASSPATH in the Forms environment file.
- B. FORMS90_PATH in the Forms environment file.
- C. FORMS90_BUILDER_CLASSPATH in the Windows registry.
- D. ARCHIVE parameter in the Forms Web configuration file.
- E. FORMS90_BUILDER_CLASSPATH in the Forms environment file.

Answer: B

Question: 39

In your Oracle9i Forms Builder session, you successfully created and compiled the PAYROLL.FMX file using the default application server URL. Before testing your form in your Oracle9i Forms Builder session, what must you do?

- A. Start an OC4J instance.
- B. Start the Oracle9iAS HTTP Server.
- C. Start a Forms Listener Servlet Instance.
- D. Copy your BASEHTML file to the Oracle9iAS server.
- E. Copy your PAYROLL.FMX file to the Oracle9iAS server.
- F. Create a configuration section in the FORMSWEB.CFG file.

Answer: A

Question: 40

You are debugging a form with three program units: PU1 calls PU2, which in turn class PU3. While running the form in debug mode, what action can you perform in Forms Builder to change the execution order so that PU3 executes before PU2?

- A. When PU2 and PU3 are both in the Stack panel, drag PU3 to a position above PU2 in the stack.
- B. Open all three program units in the Stack panel and drag PU3 so that it is positioned between PU1 and PU2.
- C. Open the PL/SQL Editor and change the code for PU1 so that it calls PU3 instead of PU2.
- D. You cannot change the execution order while the form is running in debug mode.

Answer: D

Question: 41

Which Forms applet parameters define the location of the applet JAR files?

- A. Codebase and archive parameters.
- B. ServerApp and archive parameters.
- C. Codebase and serverURL parameters.
- D. ServerApp and serverURL parameters.
- E. ServerURL and archive parameters.

Answer: A

Question: 42

Oracle9iAS Forms Services uses the Forms Listener Servlet because the servlet has which functionality?

- A. Downloads a generic Java Applet to the Form Client.
- B. Starts, stops, and communicates with the Forms Runtime.
- C. Starts, stops, and communicates with the Forms Listener.
- D. Displays the application's user interface in the Web browser window.

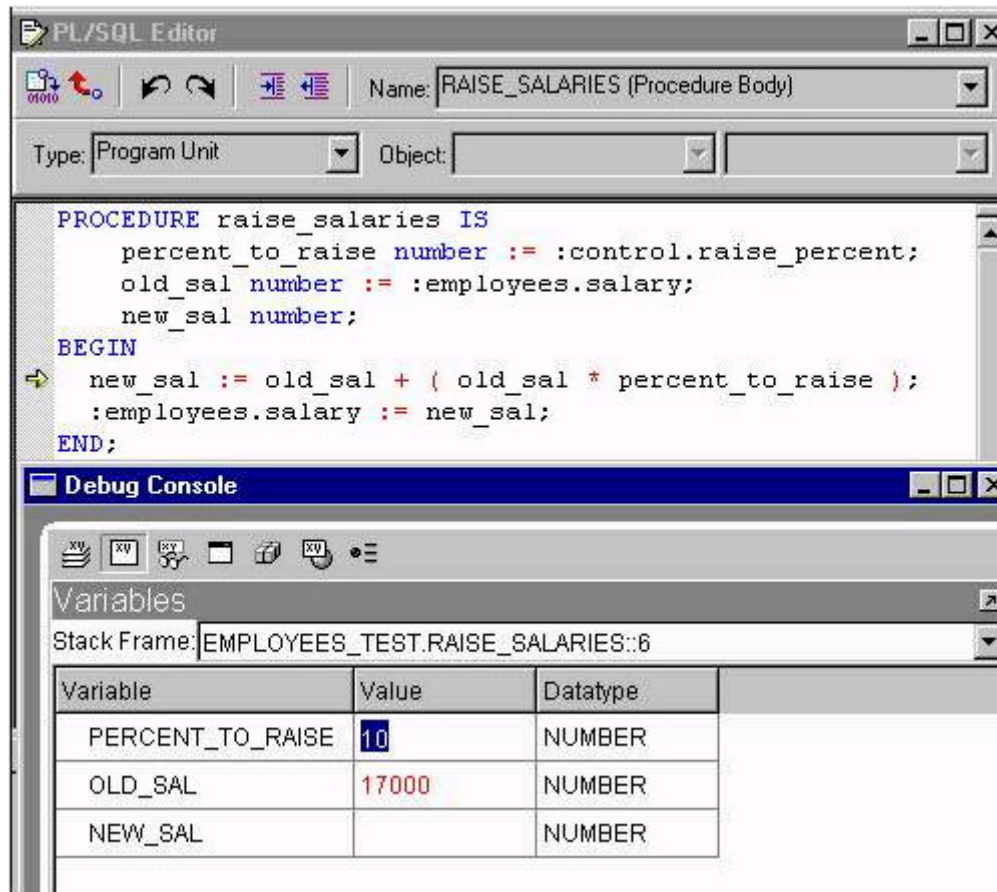
Exam Name:	Oracle9i Forms Developer: New Features		
Exam Type:	Oracle		
Exam Code:	120-140	Total Questions	129

E. Executes the code contained in a particular Oracle9i Forms application.

Answer: B

Question: 43

You are debugging the Employees form with two items on a Control block a text item in which users enter a percentage for raising the salary, and a Raise Salary button that calls the RAISE_SALARIES subprogram.



Because the procedure is raising salaries much too high, you set a breakpoint in the When-Button- Pressed trigger and run the form in debug mode. You are stepping through the RAISE_SALARIES subprogram (as shown in the exhibit).

Which statement is true about what you can do at this point in the debugger?

- A. You can modify the calculation in the line of code that is about to be executed in the PL/SQL Editor, when you click Step Into, the new calculation is used.
- B. You can change the value of the percentage in the text item on the running form; when you click Step Into, the calculation uses the changed value.
- C. You can modify the value for the Percent_To_Raise variable in the Variables panel of the debugger, when you click Step Into, the calculation uses the changed value.
- D. You cannot change the values or the code while the form is running, you must click Stop, make the changes, and run the form again.

Answer: C

Exam Name:	Oracle9i Forms Developer: New Features		
Exam Type:	Oracle		
Exam Code:	1Z0-140	Total Questions	129

Question: 44

The user of an application reports that clicking a button on a form causes an error. After deciding to debug the application remotely, you attach to the running application and open the corresponding .fmb file in Forms Builder.

What is the next logical step in the debugging process?

- A. Get the host and port information from the user.
- B. Click the Go button on the Forms Builder toolbar.
- C. Set a breakpoint in the When-Button-Pressed trigger code.
- D. Examine the Stack panel to determine which program units were invoked when the user clicked the button.
- E. Examine the Global/System Variables panel to see the values of the system variables ERROR_ITEM, ERROR_BLOCK, and ERROR_RECORD.

Answer: C

Question: 45

Exhibit:

MISSING

Which statement is true about control of the application at the point in time shown in the exhibit?

- A. The debugger and the user share control of the running application.
- B. The debugger in Forms Builder has control of the application.
- C. The user controls the application by interacting with the user interface in the client browser.
- D. The debugger that is integrated with the application has control of the application.

Answer: B

Question: 46

Which three statements were taken by Oracle to streamline Oracle9i Forms? (Choose three)

- A. Replacing the C API with a Java API.
- B. Removing Project Builder from the product.
- C. Replacing PL/SQL triggers with Java triggers.
- D. Removing features related strictly to character mode.
- E. Removing integration with Software Configuration Manager for version control.
- F. Enforcing restrictions that certain triggers be defined at the correct levels.

Answer: B, D, F

Question: 47

Which three panels can you display in the Debug Console of Forms Builder? (Choose three)

- A. Panel that enables you to monitor a list of variables that you define.
- B. Panel where you can see system variables and change the values of some of them.
- C. Panel that lists common exceptions so that you can set breakpoints that will suspend execution anywhere the form encounters an exception.
- D. Panel that shows Forms objects in a hierarchical tree so that you can set breakpoints on objects such as alerts and buttons.

Answer: A, B, C

Question: 48

Which statement about remote debugging is true?

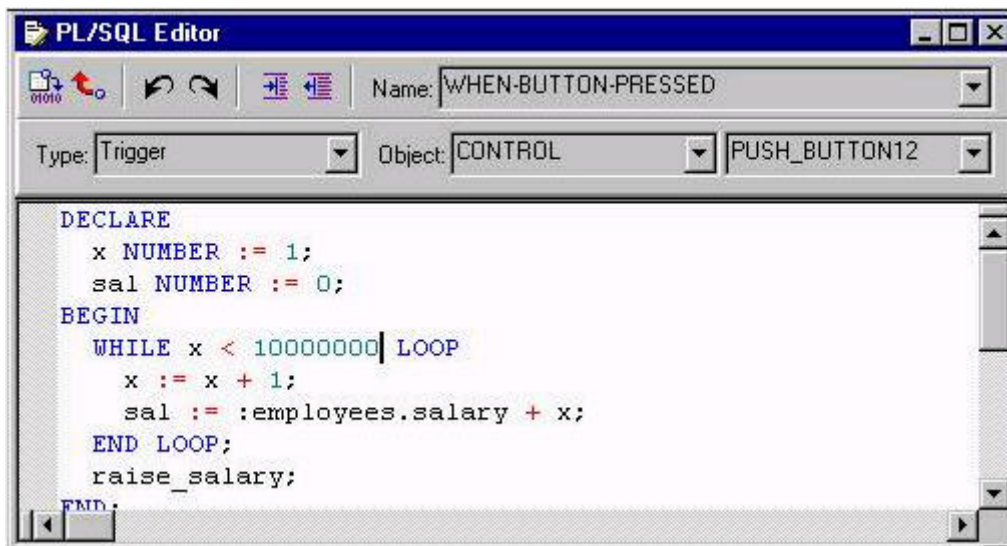
Exam Name:	Oracle9i Forms Developer: New Features		
Exam Type:	Oracle		
Exam Code:	1Z0-140	Total Questions	129

- A. The developer can attach to the running application using the host and port information from the URL that the user entered in the browser.
- B. As soon as the developer attached to the application, the user can no longer see the application in the applet window.
- C. Because it requires a direct socket connection, remote debugging is not possible over the Internet unless the firewall allows such a connection.
- D. An advantage of remote debugging is that the user can continue to interact with the application while the developer has control of it in Forms Builder.

Answer: C

Question: 49

You are running a form in debug mode, but you have not set any breakpoints in the code.



While the code executes, you decide to examine the variable values in the loop. Which menu items in the Forms Builder Debug menu would you choose?

- A. Stop, Debug Windows > Variables
- B. Pause, Debug Windows > Variables
- C. Stop, Debug Windows > Form Values
- D. Pause, Debug Windows > Form Values
- E. Step Into, Debug Windows > Variables
- F. Step Into, Debug Windows > Form Values

Answer: B

Question: 50

You intend to develop Oracle9i Forms applications that can be globally deployed in multiple character sets. The text item Maximum Length property must not be changed. What must you do to accommodate characters whose storage requires an unknown number of bytes?

- A. Set the Data Length Semantics property to Null.
- B. Set the Data Length Semantics property to BYTE.
- C. Set the Data Length Semantics property to CHAR.
- D. Set the Query Length property to a value that is 4 times the Maximum Length property.

Exam Name:	Oracle9i Forms Developer: New Features		
Exam Type:	Oracle		
Exam Code:	1Z0-140	Total Questions	129

E. Set the Query Length property to a value that is 2 times the Maximum Length property.

Answer: C

Question: 51

Which three types of built-in and properties are obsolete in Oracle9i Forms? (Choose three)

- A. Built-ins that manipulate OCX items.
- B. Built-ins that are used for OLE automation.
- C. Properties that are related to character mode.
- D. Properties that are related to Graphics charts.
- E. Built-ins (such as HOST) that call to the operating system.
- F. Properties that specify compatibility with previous Forms versions.

Answer: A, B, C

Question: 52

How does the Oracle9iAS HTTP Server handle a request for a Forms application?

- A. It routes the request by the Jserv component to OC4J.
- B. It routes the request by the mod_oc4j components to OC4J.
- C. It routes the request by the mod_oc4j component to the Forms CGI.
- D. It routes the request by the Jserv component to Forms Listener Servlet.
- E. It routes the request by the Jserv component to Oracle9iAS Forms Services.

Answer: B

Question: 53

You need to design a Forms module without using the Forms Builder tool. Which three utilities can be used for this task? (Choose three)

- A. CFAPI Utility
- B. Migration Assistant
- C. Translation Hub
- D. JDAPI Utility
- E. XML conversion

Answer: A, D, E

Question: 54

Which file can be used to start an OC4J instance?

- A. STARTOC4J.BAT
- B. STARTINST.BAT
- C. STARTINST.EXE
- D. STARTOC4J.EXE

Answer: B

Question: 55

You are setting up Forms Trace to help diagnose various problems that users encounter in production applications. It would be helpful for one application to be able to see information about Windows events (events 41, 42, 43, and 44). In a different application you would like to log information about triggers (event 66), timers (event 46), and tab pages (event 45). Which two

Exam Name:	Oracle9i Forms Developer: New Features		
Exam Type:	Oracle		
Exam Code:	1Z0-140	Total Questions	129

entries are correct ways to define named event sets that enable you to log information about only the events you are interested in for a particular application? (Choose two)

- A. event1: 41-44; event2: 45-66
- B. event1 41-44 event2 45-66
- C. event1 41-44 event2 45,45,66
- D. event1: 41-44; event2: 45,46,66
- E. event 1: 41-44 event 2: 45,46,66
- F. event1: 41-44 event2: 45-46,66
- G. event1: 41-44; event2: 45-46,66
- H. event_1: 41-44 event_2: 45,46,66

Answer: F, H

Question: 56

Which Oracle9i Forms built-in can be used to change the display of a single DATETIME value from one time-zone region to another without affecting other DATETIME items?

- A. DISPLAY_ITEM
- B. ADJUST_TZ
- C. SET_APPLICATION_PROPERTY with the BUILTIN_DATE_FORMAT argument.
- D. SET_APPLICATION_PROPERTY with the DATETIME_LOCAL_TZ argument.
- E. SET_APPLICATION_PROPERTY with the PLSQL_DATE_FORMAT argument.

Answer: B

Question: 57

You are debugging an application remotely, and you have obtained host and port information from the user.



Which menu option from the Debug menu (shown in the exhibit) should you choose to enable you to enter the host and port information?

- A. Debug Module
- B. Attach Debug
- C. Debug Console
- D. Debug Windows

Exam Name:	Oracle9i Forms Developer: New Features		
Exam Type:	Oracle		
Exam Code:	1Z0-140	Total Questions	129

Answer: B

Question: 58

Which are three typical reasons for building a form using JDAPI? (Choose three)

- A. To convert a form document to provide a more readable form definition.
- B. To create several similar forms rapidly outside the Forms Builder tool.
- C. To create a JavaBean and Pluggable Java Components in a form.
- D. To make the same modifications (such as color and font changes) to several forms.
- E. To generate documentation about the structure of the form, such as the names of all graphic objects on all canvases of the labels of all tabs on all tab canvases.

Answer: B, D, E

Question: 59

Exhibit:

*****MISSING*****

The procedure RAISE_SALARY is a program unit in the EMPLOYEES_TEST form. It calls the RAISE_SALARIES function, which is a stored program unit.

You are running the EMPLOYEES_TEST form in debug mode and you are stepping through code (as shown in the exhibit). When you click Step Into, the display does not change. After you click Step into several times, the value of EMPLOYEES.SALARY changes, but you are never able to see the RAISE_SALARIES function.

What action could you take so that the stored RAISE_SALARIES function appears in the stack and in the PL/SQL Editor as you are stepping through its code?

- A. Right-click the highlighted procedure in the Stack panel and select View Stored Code from the popup menu.
- B. Issue the following statement in SQL *Plus after creating the RAISE_SALARIES function:
ALTER SESSION SET PLSQL_DEBUG=TRUE;
- C. Issue the following statement in SQL *Plus after creating the RAISE_SALARIES function:
ALTER FUNCTION RAISE_SALARIES COMPILE DEBUG;
- D. None. Although stored program units execute, they do not appear in the stack or in the PL/SQL Editor as you step through the code in the Forms Builder debugger.

Answer: C

Question: 60

You want to make an LOV cancelable at the time of record retrieval. You also need to obtain information about the number of records retrieved by the LOV at any particular time.

Which two properties of which two objects must you set?

- A. The Interaction Mode property of the Forms module and the Filter Before Display property of the LOV.
- B. The Interaction Mode property of all the items to which the LOV is assigned and the Filter Before Display property of the LOV.
- C. The Interaction Mode property of the record group on which the LOV is based and the Filter Before Display property of the LOV.
- D. The Interaction Mode property of the LOV and the Filter Before Display property of the record group that supports the LOV.

Answer: A

Question: 61

Exam Name:	Oracle9i Forms Developer: New Features		
Exam Type:	Oracle		
Exam Code:	1Z0-140	Total Questions	129

You have a Department form that uses OPEN_FORM to invoke the Employees form that displays all employees in the selected department. You are passing the DEPARTMENT_ID between forms. The forms work fine together. However, when you run the Employees form by itself, you receive the following error message as soon as the form appears:
FRM-40815 Variable GLOBAL_DEPARTMENT_ID does not exist.
How would you use the debugger to help diagnose the problem?

- A. Set a breakpoint in the Department form at the OPEN_FORM code, run the Department form in debug mode, invoke the Employees form, and step through the code.
- B. Set a breakpoint in the When-New-Form-Instance trigger of the Employees form, run the Employees form in debug mode, and step through the code.
- C. Set a breakpoint in the Department form at the OPEN_FORM code, run the Department form in debug mode, invoke the Employees form, and view the Global/System Variables panel.
- D. Set a breakpoint in the When-New-Form-Instance trigger of the Employees form, run the Department form in debug mode, invoke the Employees, and step through the code.

Answer: B

Question: 62

You are upgrading a form that was developed using Forms 6*i*. You previously deployed the form using character mode only.

Item#	Product Id	Description	Unit Price	Quantity	Item Total
1	3106	KB 101.EN	48.00	61	2,928.00
2	3114	MB - S900/6500	96.80	43	4,162.40
3	3123	PS 220V /D	79.00	47	3,713.00
4	3129	Sound Card STD	41.00	47	1,927.00

The form uses a Post-Query trigger to calculate the Item Total. The same calculation is performed in key triggers (Key-Next-Item and Key-Prev-Item) on the Unit Price and Quantity items to update the Item Total when the user changes the price or quantity.

What two actions could you take in the upgraded application (shown in the exhibit) to ensure that the Item Total is correct in the form when the block is first queried and when either the Unit Price or the Quantity is changed? (Choose two)

- A. Move all calculations to a database trigger.
- B. Delete the Post-Query and key triggers, and make Item Total a calculated item.
- C. Leave the Post-Query trigger as it is, delete the key triggers, and put the calculation in Pre-Text-Item triggers on Quantity and Item Total.
- D. Delete the Post-Query and key triggers, and put the calculation in a When-Validate-Item trigger on Item Total.
- E. Leave the Post-Query trigger as it is, delete the key triggers, and put the calculation in When-Validate-Item triggers on Unit Price and Quantity.
- F. Leave the form as it is because key triggers function as they did in Forms 6*i*.

Answer: B, E

Question: 63

To retrieve the version number of the Forms Runtime that is running an application, you have a push button in the MDI toolbar canvas of the application to call the GET_APPLICATION_PROPERTY built-in.

What property name should you pass to this built-in to return the version number value as a string?

Exam Name:	Oracle9i Forms Developer: New Features		
Exam Type:	Oracle		
Exam Code:	1Z0-140	Total Questions	129

- A. VERSION
- B. COMMENTS
- C. RUNTIME_COMPATIBILITY_MODE
- D. APPLICATION_INSTANCE

Answer: A

Question: 64

The PayMore.com salary department wants to update monthly payments by running the MONPAY.FMX form. The company configures Oracle9iAS to listen on the default port. The form accepts a single parameter MON with a value of "may". Which URL is appropriate?

- A.
<http://PayMore.com/forms90/f90servlet/form=monpay.fmb&userid=ora1/oracle@pr2?MON=may>
- B.
<http://PayMore.com:80/forms90/f90servlet/form=monpay.fmb&userid=ora1/oracle@pr2?MON=may>
- C.
<http://PayMore.com:80/forms90/f90servlet?form=monpay.fmb&userid=ora1/oracle@pr2&MON=may>
- D.
<http://PayMore.com/forms90/f90servlet?form=monpay.fmx&userid=ora1/oracle@pr2&MON=may>
- E.
<http://PayMore.com:8888/forms90/f90servlet?form=monpay.fmx&userid=ora1/oracle@pr2&MON=may>
- F.
<http://PayMore.com:8888/forms90/f90servlet?form=monpay.fmb&userid=ora1/oracle@pr2&MON=may>

Answer: D

Question: 65

When is a JDAPI session closed?

- A. When the Jdapi.shutdown() method is called.
- B. When the save() method is called on the Forms object.
- C. When the compile() method is called on the Forms object.
- D. When the destroy() method is called on the Forms object.

Answer: A

Question: 66

On Windows platforms, which two programs in the \BIN directory enable you to upgrade applications from Forms 6i to the latest version of Oracle Forms? (Choose two.)

- A. IFCMP90.EXE (or FRMCMP.EXE)
- B. IFWEB90.EXE (or FRMWEB.EXE)
- C. D2SCV90.EXE (or D2SCV.EXE)
- D. FNCHK90.EXE (or FNCHK.EXE)
- E. IFXML2F90.BAT (or FRMXML2F.BAT)
- F. RWBUILDER.EXE
- G. RWCONVERTER.EXE
- H. IFPLSQLCONV90.BAT (or FRMPLSQLCONV.BAT)

Exam Name:	Oracle9i Forms Developer: New Features		
Exam Type:	Oracle		
Exam Code:	1Z0-140	Total Questions	129

Answer: A, H

Question: 67

Which two Oracle9iAS components run in the OC4J container? (Choose two)

- A. Forms applet
- B. Forms Servlet
- C. Oracle JInitiator
- D. Forms Runtime Session
- E. Forms Listener Servlet
- F. Oracle9iAS HTTP Listener

Answer: B, E

Question: 68

Which list contains only those methods for using Java in Forms?

- A. JavaBeans, PJC's, Java Importer, JDAPI
- B. JavaBeans, PJC's, Java Stored Procedures, JDAPI
- C. JDAPI, PJC's, Java Importer, Java Stored Procedures
- D. JavaBeans, PJC's, Java Importer, Java Stored Procedures

Answer: D

Question: 69

You created a form in Forms Builder and you want to store it in the database, but you cannot find an option to save it to the database.

How can you enable the option to save modules to the database?

- A. There is no option to save modules to the database in Oracle9i Forms.
- B. Create the Oracle9i Forms database tables to enable the option to save to the database.
- C. Set an environment variable that is new in Oracle9i Forms prior to starting Forms Builder to indicate your preference to save modules to the database.
- D. Access the Preference dialog box from the Edit menu in Oracle9i Forms (rather than from the Tools menu, as in previous versions), and then click the Access tab to set the module access to Database.

Answer: A

Question: 70

You are upgrading a Human Resources application that was developed in Forms 6i. Although the .fmx files exist on the file system, you are not able to find .fmb files.

Exam Name:	Oracle9i Forms Developer: New Features		
Exam Type:	Oracle		
Exam Code:	120-140	Total Questions	129



When you open the Forms 6i Builder and click Open File, you see the window that is shown in the exhibit.

Which two methods can you use to upgrade this application to Oracle9i Forms? (Choose two)

- A. Open each module from the database in the Oracle9i Forms builder and save it.
- B. Open each module from the database in the Forms 6i Builder, save it to the file system, open the module from the file system in the Oracle9i Forms Builder, and save it again.
- C. Create the Oracle9i Forms base tables in the database.
Then open each module from the database in the Oracle9i Forms Builder and save it.
- D. Use the Oracle9i Forms Migration Assistant and set an option in the CONVERTER.PROPERTIES file to access the modules from the database.
- E. Run the Forms 6i Compiler on the modules with the EXTRACT=YES option.
Then use the Oracle9i Forms Migration Assistant to upgrade the modules.

Answer: B, E

Question: 71

Which statement describes LOVs in forms that were developed in Forms 6i (or earlier version)?

- A. LOVs required that a condition be specified before record retrieval.
- B. LOVs did not allow users to specify a condition before record retrieval.
- C. LOVs were not cancelable in cases where it was taking a long time to retrieve records.
- D. Validation on the item could not be permitted to force the user to enter only those values retrieved by the LOV.

Answer: C

Question: 72

There are several forms in your Forms 6i application that perform SELECT statements in triggers and program units to extract some information from an ARCHIVES table.

Exam Name:	Oracle9i Forms Developer: New Features		
Exam Type:	Oracle		
Exam Code:	1Z0-140	Total Questions	129

As part of the upgrade to Oracle9i Forms, you have split the ARCHIVES table by year. The current table is now called ARCHIVES2001, so you want to change all occurrences of ARCHIVES in your PL/SQL code to ARCHIVES2001.

Which file would you modify so that the Oracle9i Forms Migration Assistant performs the substitution when you use this tool to upgrade your application?

- A. RULES.PROPERTIES
- B. FORMS90.PROPERTIES
- C. CONVERTER.PROPERTIES
- D. LOCALSTRINGS.PROPERTIES
- E. SEARCH_REPLACE.PROPERTIES

Answer: E

Question: 73

What is the function of the Forms Servlet?

- A. It creates a dynamic HTML file.
- B. It starts a Forms run-time session.
- C. It manages network requests from the Forms Client.
- D. It connects to and communicates with the database server.
- E. It renders the Forms Service application display for the user.

Answer: A

Question: 74

A user runs, and then exists, the Payroll form session over the Web. The same user then starts a Sales forms session over the Web. The Sales forms application uses two form modules and two custom menu modules.

How many Forms applets are required?

- A. One Forms applet is required to run any Oracle9iAS Forms Service application.
- B. Five Forms applets are required. Separate Form applets must be deployed for each Oracle9iAS Forms Services form or menu module.
- C. Three Forms applets are required. A Forms applet is required for each form module in a multiple-form Oracle9iAS Forms Services session.
- D. Two Forms applets are required. Separate Forms applets must be deployed for each Oracle9iAS Forms Service application.
- E. Four Forms applets are required. One Forms applet is used to start each Oracle9iAS Forms Services application. Additional Forms applets are required for each form module using a custom menu.

Answer: A

Question: 75

You are writing a Forms application, and you plan to include several JavaBeans based on AWT classes and Swing classes.

What should you do to facilitate the communication between Forms and the JavaBeans?

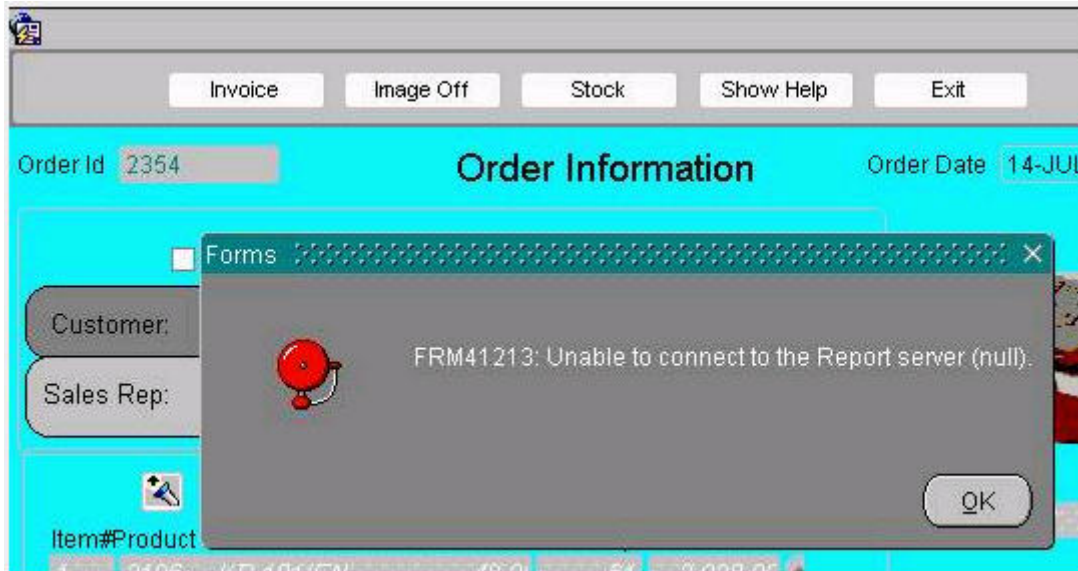
- A. Write Java wrapper classes to integrate the JavaBeans into Forms.
- B. Use the FBean PL/SQL package and its built-ins to register and invoke the JavaBeans.
- C. Add a special layer of Java code to register the properties and methods of the JavaBeans.
- D. You do not need to use any built-in package or write any code to integrate JavaBeans into Forms.

Exam Name:	Oracle9i Forms Developer: New Features		
Exam Type:	Oracle		
Exam Code:	1Z0-140	Total Questions	129

Answer: B

Question: 76

The Orders form was developed using Forms 6i and uses RUN_PRODUCT to call an invoice report.



You used the Oracle9i Forms Migration Assistant to upgrade the Orders form, which changed the RUN_PRODUCT call to use RUN_REPORT_OBJECT. You run the upgraded form and click the Invoice button, which invokes the report. However, you receive the error message that is shown in the exhibit. What should you do to avoid this problem?

- A. Set the REPSERV environment variable before running the Migration Assistant.
- B. There is no way for Migration Assistant to know the reports server name, so you must modify the form after upgrading it to specify which reports server to use.
- C. Run the Migration Assistant with the REPSERVERNAME command line argument to specify the reports server.
- D. Set the default REPORTS_SERVERNAME Migration Assistant property to specify the name of the reports server to be used when converting RUN_PRODUCT calls.
- E. Set the SERVER= property in the Reports Servlet properties file; the Migration Assistant looks here to find the default reports server when converting RUN_PRODUCT calls.

Answer: D

Question: 77

Which file can be used to stop an OC4J instance?

- A. STOPOC4J.BAT
- B. STOPINST.BAT
- C. STOPINST.EXE
- D. STOPOC4J.EXE

Answer: B

Question: 78

Exam Name:	Oracle9i Forms Developer: New Features		
Exam Type:	Oracle		
Exam Code:	1Z0-140	Total Questions	129

What is the main reason that Oracle streamlined Oracle9i Forms?

- A. To eliminate product features that are not widely used.
- B. To make it easier to port the product to a variety of platforms.
- C. To simplify the menu structure and make the product easier to use.
- D. To optimize the product for building and deploying Internet applications.

Answer: D

Question: 79

To apply corporate standard to the look and feel of an application, you must make the same changes to hundreds of forms. These forms do not inherit objects from any object library or from other forms.

What is the quickest way to accomplish this task?

- A. Make use of an API (like JDAPI) to apply the standards.
- B. Create an object group of the standard objects, and then copy the object group to all the forms.
- C. Write a script that makes use of the Migration Assistant to apply changes to all the forms.
- D. Create an object library of all the objects needed to apply the standards, and then inherit these objects in all the forms that need to be modified.

Answer: A

Question: 80

Your task is to create several similar forms rapidly. The method that you use should make each form slightly different from the others based on the information given to it.

How do you accomplish this task?

- A. The only way to accomplish this task is to create a object library.
- B. The only way to accomplish this task is to use a template form and make the minor modifications to each form after it is created from the template form.
- C. Write an API program (like JDAPI) to create new Forms modules.
Pass the required parameters to this program at the time of execution to build each form.
- D. Build a form and create parameters in that form.
Make several copies of the same form by giving a new name to each copy of the Forms module and its parameters.

Answer: C

Question: 81

Which files must be modified to configure Forms Trace?

- A. FORMSWEB.CFG and DEFAULT.ENV
- B. FTRACE.CFG and DEFAULT.ENV
- C. FORMSWEB.CFG and FTRACE.CFG
- D. FORMSWEB.CFG, FTRACE.CFG, and DEFAULT.ENV

Answer: D

Question: 82

You created a OLE container in a form by converting the item type of an existing item from Text Item to OLE Container. When you try to compile the form, you receive an error pertaining to that item. What is the most likely cause of the error?

- A. You cannot create an OLE container this way in Oracle9i Forms; you must create it with the

Exam Name:	Oracle9i Forms Developer: New Features		
Exam Type:	Oracle		
Exam Code:	1Z0-140	Total Questions	129

- OLE tool in the Layout Editor.
- B. Oracle9i Forms enforces requirements more tightly than previous versions did, so you must specify an initial object to insert into the OLE container.
 - C. The OLE Container item type is an operating system-specific item type cannot be used in Oracle9i Forms.
 - D. Oracle9i Forms enforces the requirement that OLE items be displayed, but you did no change the item's Canvas property so that the item is displayed on a canvas.

Answer: C

Question: 83

Which file contains Forms Servlet parameters?

- A. WEB.XML
- B. DEFAULT.ENV
- C. FORMSWEB.CFG
- D. FORMS90.CONF

Answer: C

Question: 84

Your company uses Forms 4.5 to run an application that uses v2-style triggers. What must you do to migrate the application to Oracle9i Forms in a supported fashion?

- A. Upgrade to Oracle9i Forms, which automatically converts v2-style triggers to PL/SQL triggers.
- B. Rewrite the v2-style triggers as PL/SQL triggers in Forms 4.5, upgrade to Forms 6i, then upgrade to Oracle9i Forms.
- C. Upgrade to Forms 6i using the compiler option ADD_TRIGGERS=YES to convert the v2-style triggers, then upgrade to Oracle9i Forms.
- D. Upgrade to Forms 6i, which automatically converts v2-style triggers to PL/SQL triggers, then upgrade to Oracle9i Forms.
- E. You must rewrite the application in Oracle9i Forms because you cannot upgrade applications that use v2-style triggers.

Answer: B

Question: 85

You are modifying a form using JDAPI, and you need to process all the items of a Forms block. Which approach would be best?

- A. Create an object for reach item of the block.
- B. Use the JdapiIterator class to iterate through all items of the block.
- C. Write a separate method for each item that must be processed.
- D. Create an array of item objects explicitly and process the elements of the array.

Answer: B

Question: 86

The Oracle9iAS Application Server is installed on your machine. In Forms Builder, you open the HResource form and connect to the HR database. You also edit your Forms Builder run-time preference and click Set Default.

To test the HResource form module, you click Run Form and receive the error message FRM-0142 (The HTTP listener is not running).

What action should you take?

Exam Name:	Oracle9i Forms Developer: New Features		
Exam Type:	Oracle		
Exam Code:	1Z0-140	Total Questions	129

- A. Start an OC4J instance.
- B. Start the Oracle9iAS Listener.
- C. Run the batch file STOPINST.BAT.
- D. Start the browser before clicking Run Form.
- E. Generate the form and move the .fmx to the Oracle9iAS deployment directory.

Answer: A

Question: 87

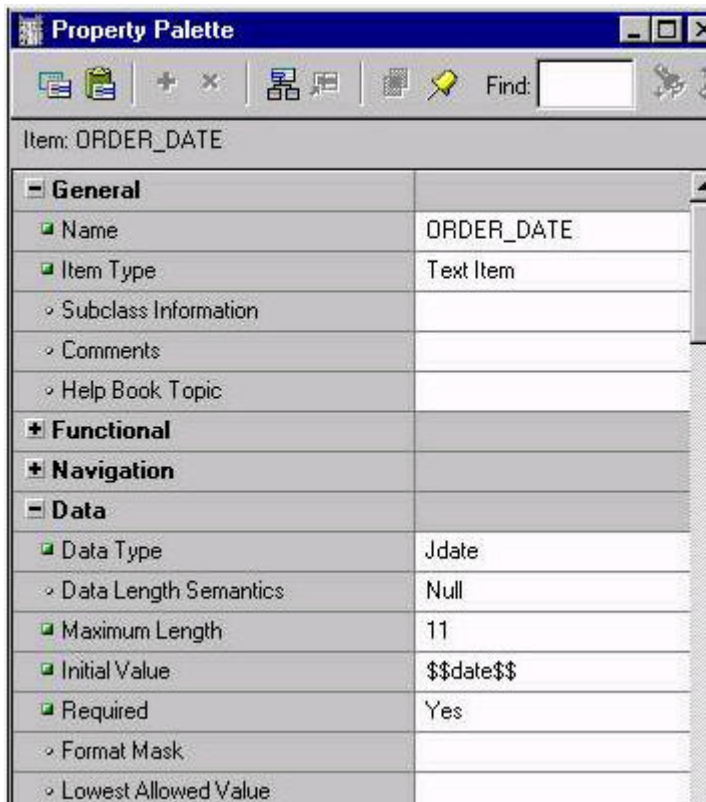
You are upgrading a Forms 6i application to Oracle9i Forms, and you know that many of the forms in the application use RUN_PRODUCT to call a report. What is the most efficient way to upgrade the application?

- A. Upgrade the modules in batch mode with the Forms Compiler.
- B. Upgrade the modules with the Oracle9i Forms Migration Assistant.
- C. Open each module in Oracle9i Forms Builder, search for RUN_PRODUCT class, recode them manually, then compile.
- D. Use the Oracle9i Forms Runtime executable to test each module, then use the Forms Compiler on those that do not run successfully.

Answer: B

Question: 88

The exhibit shows the Property Palette for the ORDER_DATE base table item.



You are migrating the Orders form from Forms 3.0. For the final step in the migration, you load the form into the latest version of Oracle Forms Builder. You run the form and execute a query, which produces the error message FRM-40505:

Exam Name:	Oracle9i Forms Developer: New Features		
Exam Type:	Oracle		
Exam Code:	1Z0-140	Total Questions	129

Oracle error: unable to perform query.

What change must you make to the ORDER_DATE item for the query to execute?

- A. Change the data type to a data type that is supported in the latest version of Oracle Forms.
- B. Set the format mask, which the database requires for dates to be Y2K-compliant.
- C. Change the initial value to \$\$SYSDATE\$\$ because \$\$DATE\$\$ is not supported in the latest version of Oracle Forms.
- D. Set the Data Length Semantics property (which is new in the latest version of Oracle Forms) to a non-null value.

Answer: A

Question: 89

You want to change the mod_oc4j configuration file to redefine the aliases "f90servlet" and "190servlet" for the Forms Servlet and the Forms Listener Servlet.

Which file should you edit?

- A. BASE.HTM
- B. F90ALL.JAR
- C. FORMS90.CONF
- D. FORMSWEB.CFG
- E. REGISTRY.DAT
- F. FORMS90OC4J.PROPERTIES

Answer: C

Question: 90

You are upgrading an application to the latest version of Oracle Forms that was previously deployed only in client/server.



Exam Name:	Oracle9i Forms Developer: New Features		
Exam Type:	Oracle		
Exam Code:	1Z0-140	Total Questions	129

When you test the upgraded application, you notice that icons do not appear on the buttons (as shown in the exhibit). When you ran the application in client/server with Forms 6i, icons appeared on the buttons. Because there are many icon buttons, you are concerned about generating frequent round-trips to the application server to display icons on the buttons, so you convert the icons to .gif files and place them in a JAR file. You modify the Forms Servlet configuration file to set IMAGEBASE to CODEBASE and include the name of the JAR file in the appropriate ARCHIVE parameter.

Where should you locate the JAR file on your application server machine so that it is downloaded to the client to reduce subsequent network traffic?

- A. Place the icon JAR file in any directory on the application server machine, and set the UI_ICON environment variable to the physical location of the JAR file.
- B. Place the icon JAR file in the JAVA subdirectory of the FORMS90 (or FORMS) directory under the iAS \$ORACLE_HOME on the application server machine.
- C. Place the icon JAR file in any virtual directory on the application server machine, and set ICONPATH in the Forms registry file to the virtual directory where the JAR file is located.
- D. Place the icon JAR file in any directory on the application server machine, and set the FORMS90_PATH (or FORMS_PATH) environment variable to include that directory.

Answer: B

Question: 91

In Forms Builder, you click Run Form to test a new Forms module. The Oracle9iAS Application Server is not installed on your machine, which is called my_pc. You select Edit>Preferences from the Forms Builder menu and view the run-time options.

A drop-down list reveals four potential environments, with option 3 highlighted:

- 1 http://mycompany.com:8888/forms90/f90servlet
 - 2 http://my_pc:8888/forms90/f90servlet
 - 3 http://mycompany.com:80/forms90/f90servlet
 - 4 http://my_pc/forms90/f90servlet
- You click the Set Default button.

Which test environment are you using?

- A. The forms runs in Java Appletviewer on your machine.
- B. The forms runs on your machine using OC4J as the Web listener.
- C. The form does not run because Oracle9iAS Application Server is not installed on your machine.
- D. The form automatically deploys and runs on a middle-tier Oracle9iAS Application Server (mycompany.com) via port 80.
- E. The form automatically deploys and runs on a middle-tier Oracle9iAS Application Server (mycompany.com) via port 8888.

Answer: B

Question: 92

You are designing a menu that attached to multiple forms in your application, and you want to add a menu item that enables remote debugging of the application. Which built-in must you include in the menu item code?

- A. BREAK
- B. MESSAGE
- C. DEBUG_MODE

Exam Name:	Oracle9i Forms Developer: New Features		
Exam Type:	Oracle		
Exam Code:	1Z0-140	Total Questions	129

- D. DEBUG ATTACH
- E. DEBUG.SUSPEND
- F. DEBUG.INTERPRET

Answer: D

Question: 93

You want to ensure that the Maximum Length and Query Length properties for a text item are compatible with multiple-byte character sets. What must you do?

- A. Set the Data Length Semantics property to CHAR, and ensure that the corresponding database column has a length declaration of CHAR.
- B. Set the Data Length Semantics property to BYTE, and ensure that the corresponding database column has a length declaration of BYTE.
- C. Set the Data Length Semantics property to CHAR, and set the environment variable NLS_LENGTH_SEMANTICS to CHAR.
- D. Set the Data Length Semantics property to BYTE, and set the environment variable NLS_LENGTH_SEMANTICS to BYTE.

Answer: A

Question: 94

In calling an Oracle9iAS Forms application, URL parameter information is combined with the contents of the FORMSWEB.CFG file.

Which Oracle9i Forms components manage this process?

- A. Forms CGI only.
- B. Forms Servlet only.
- C. Forms Listener Servlet only.
- D. Forms CGI and Forms Servlet.
- E. Forms CGI and Forms Listener Servlet.
- F. Forms Listener Servlet and Forms Servlet.

Answer: B

Question: 95

You are upgrading a Forms 6i application that was originally written in Forms 2.3. It uses LOVs extensively many of which are the old-style LOVs that are not supported in Oracle9i Forms. Which statement about this upgrade is true?

- A. The upgrade process automatically converts each old-style LOV by creating a record group and basing the LOV on that record group.
- B. You should convert the old-style LOVs in Forms6i prior to upgrading the application to Oracle9i Forms.
- C. You can upgrade the application to Oracle9i Forms and then manually convert the LOVs to record group LOVs so that the forms can compile successfully.
- D. You should have converted the old-style LOVs in Forms 4.5, because they cannot be edited in Forms 6i and will prevent the application from upgrading successfully.

Answer: A

Question: 96

Your Oracle9iAS HTTP Listener is configured for the default port. You want to ensure that your Forms Listener Servlet can manage communication between the Forms Java Client and Oracle9iAS Forms Services. What action is required?

Exam Name:	Oracle9i Forms Developer: New Features		
Exam Type:	Oracle		
Exam Code:	1Z0-140	Total Questions	129

- A. Configure Forms Listener Servlet to listen on the default port 7000.
- B. Configure Forms Listener Servlet to listen on the default port 1949.
- C. Configure Forms Listener Servlet to listen on the default port 80.
- D. No action is required.

Answer: D

Question: 97

How is the user interface of an Oracle9iAS Forms application displayed?

- A. An embedded Forms applet renders the user interface in the user's Web browser.
- B. OC4J sends the Forms Runtime Engine user interface back to the user's Web browser as an HTML page.
- C. A downloaded Forms applet communicates with a separate Forms Listener to obtain user interface metadata.
- D. OC4J sends the Forms Listener Servlet user interface back to the user's Web browser as an HTML page.
- E. OC4J sends the Forms Servlet user interface back to the user's Web browser as an HTML page.

Answer: A

Question: 98

You need to obtain a valid Forms XML schema file to be used in your XML software or parser. What must you do?

- A. Use the XML Validator utility to obtain the Forms XML schema file.
- B. Manually generate the schema using the SchemaGenerator tool.
- C. Use the Forms to XML conversion utility to generate the Forms XML schema file.
- D. Use the XML to Forms conversion utility to generate a schema internally at validation from the Forms metadata in the JDAPI.

Answer: B

Question: 99

You are troubleshooting an Oracle9i Forms application in which a user reports intermittent FRM errors, although the application continues to run.

Which tool could you use to log information about the application that would help you determine what is causing the errors?

- A. Forms Trace
- B. Servlet Logging
- C. Forms Runtime Diagnostics
- D. Performance Event Collection System.

Answer: A

Question: 100

Which three tasks can be performed by the XML2Forms utility? (Choose three)

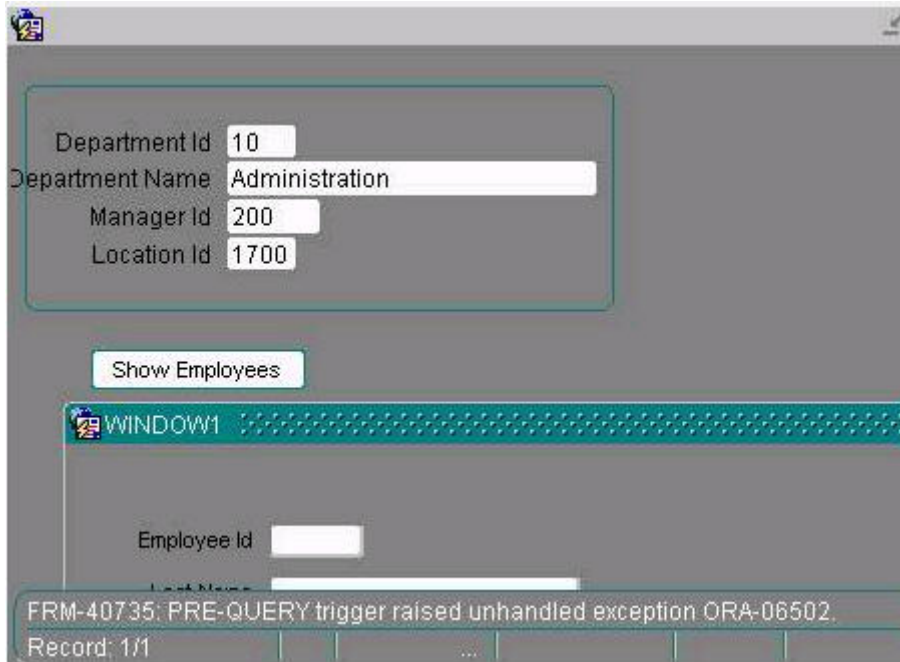
- A. Generating an XML schema file.
- B. Parsing of XML using Oracle XDK SAXParser.
- C. Creating a Forms object for each XML element.
- D. Validating XML against the Forms XML schema.

Exam Name:	Oracle9i Forms Developer: New Features		
Exam Type:	Oracle		
Exam Code:	120-140	Total Questions	129

Answer: B, C, D

Question: 101

You are debugging an Employees form that was written by another developer.



The form is invoked from the Departments form and should display all employees in a selected department. However, when the Employees form is opened from the Departments form, and error message is received (see exhibit)

The Pre-Query trigger on the Employees block in the Employees form is coded as follows:

```
:employees.department_id := :parameter.department_id;
```

Without modifying any code, you want to check the value of the DEPARTMENT_ID parameter that is passed from the Departments form. You run the Departments form in debug mode and invoke the Employees form from it. When the error is displayed, what action should you take in Forms Builder?

- A. Set a breakpoint in the Pre-Query trigger.
- B. Set a Break on Exception on the 6502 exception.
- C. Look at the Form Value panel to see the value of the parameter.
- D. Right-click in the Watch panel, select Parameter from the pop-up menu, and add the parameter to the watch list so that you can see its value.

Answer: C

Question: 102

Which statement about the Debug Console is true?

- A. The Stack panel always appears in it.
- B. It must be invoked using the Debug menu of Forms Builder.
- C. The toolbar contains buttons that dock or unlock the panels of the Debug Console.
- D. You can choose which panels to display in it by using the Debug menu of Forms Builder.

Exam Name:	Oracle9i Forms Developer: New Features		
Exam Type:	Oracle		
Exam Code:	1Z0-140	Total Questions	129

Answer: D

Question: 103

You are running a form in debug mode and you begin to step through the code of a lengthy subprogram. After stepping through a few lines of its code, you realize that the error comes not from the code in that particular subprogram but from code that is executed after it. At this point, what is the most efficient action to take?

- A. Click Step Over to step over the execution of the subprogram.
- B. Click Stop, set a breakpoint immediately after the subprogram code is called, and run the form in debug mode again.
- C. Click Step Out to resume stepping through code after the subprogram is called.
- D. Open the Stack panel, select the previous stack frame, set a breakpoint following the line that calls the subprogram, and click Go.

Answer: C

Question: 104

How do you start a JDAPI session in default mode?

- A. You must use the Jdapi.startup() method.
- B. You must take a call to the FormModule constructor.
- C. The first functional call made to JDAPI starts the session in default mode.
- D. You must use Jdapi.shutdown() to close all open session and then use Jdapi.startup() to start the session in default mode.

Answer: C

Question: 105

When Oracle9i Forms built-in can be used to automatically change the display of all DATETIME values in your application from one time-zone region to another?

- A. DISPLAY_ITEM
- B. ADJUST_TZ
- C. SET_APPLICATION_PROPERTY with the BUILTIN_DATE_FORMAT argument.
- D. SET_APPLICATION_PROPERTY with the DATETIME_LOCAL_TZ argument.
- E. SET_APPLICATION_PROPERTY with the PLSQL_DATE_FORMAT argument.

Answer: D

Question: 106

Which two statements accurately describe Forms Services components? (Choose two.)

- A. The Forms Runtime Engine is started by the Forms Servlet.
- B. The Forms Runtime Engine is started by the Forms Listener Servlet.
- C. The Forms Runtime Engine is started by the separate Forms Listener.
- D. The Forms Servlet replaces the Forms Listener for running Forms on the Web.
- E. A separate Forms Listener process is a new way of running Forms on the Web.
- F. The Forms Listener Servlet replaces the Forms Listener for running Forms on the Web.

Answer: B, F

Question: 107

You were hired by a company that is using a Forms 2.3 application. Your task is to migrate the application to the latest supported Forms release.

Exam Name:	Oracle9i Forms Developer: New Features		
Exam Type:	Oracle		
Exam Code:	1Z0-140	Total Questions	129

To ensure that the migration is supported, which tasks must you perform?

- A. Upgrade the application to Forms 6*i*, then to Oracle9*i* Forms.
- B. Upgrade the application to Forms 5.0, then to Oracle9*i* Forms.
- C. Upgrade the application to Forms 4.5, then to Forms 6*i*, then to Oracle9*i* Forms.
- D. Upgrade the application to Oracle9*i* Forms, making sure to specify the VERSION=23 compiler option.
- E. You cannot upgrade the application because v2.3-style LOVs are no longer supported. You must rewrite the application in Oracle9*i* Forms.

Answer: C

Question: 108

Exhibit:

*****MISSING*****

You want to upgrade multiple forms to Oracle9*i* Forms, so you create a file called UPGRADE.BAT with the following code:

```
for %%f in (%1) do call ifplsconv90
module=%%f
```

You run the batch file from the command line receive the feedback shown in the exhibit. You close the command prompt screen.

Next, you examine the log file, because you did not notice in the screen feedback whether the RUN_REPORT call in the Orders form was successfully converted to RUN_REPORT_OBJECT. However, the log file contains the information for the Summit form only.

How can you perform the upgrade of multiple forms without overwriting the log file for each one?

- A. Modify the batch file by appending LOG=%%F.LOG.
- B. Set the LOGFILENAME Migration Assistant property to *.log.
- C. Unset the LOGFILE Migration Assistant property so that the default will be the name of the file being upgraded.
- D. It is not possible to do this. Instead, you must run the Migration Assistant once for each form and specify a different log file for each.

Answer: A

Question: 109

You are implementing time-zone supported for an application.

You have set the environment variables FORMS90_TZ_FILE and FORMS90_DATETIME_SERVER_TZ, but you have not set the FORMS90_DATETIME_LOCAL_TZ environment variable.

How does Forms behave at run time?

- A. You get a run-time error, and an error message is displayed.
- B. FORMS90_DATETIME_LOCAL_TZ defaults to the PDT time zone.
- C. FORMS90_DATETIME_LOCAL_TZ defaults to the GMT time zone.
- D. FORMS90_DATETIME_LOCAL_TZ defaults to the client browser time-zone region or the URL parameter DATETIMELOCALTZ.
- E. FORMS90_DATETIME_LOCAL_TZ defaults to the value of the FORMS90_DATETIME_SERVER_TZ environment variable.

Answer: D

Question: 110

Exam Name:	Oracle9i Forms Developer: New Features		
Exam Type:	Oracle		
Exam Code:	120-140	Total Questions	129

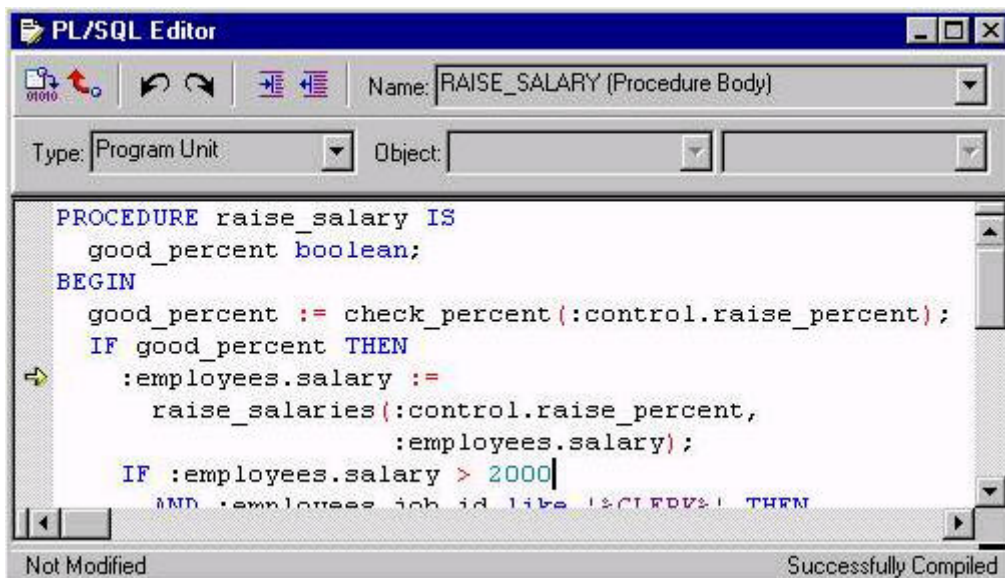
Which two statements describe the functionality of OC4J? (Choose two)

- A. Forms Servlet for creating a dynamic HTML file.
- B. Browser Java plug-in for running the Forms applet.
- C. Servlet container for running Oracle9iAS Forms Services.
- D. Java applet for deploying the Forms Client user interface.
- E. Forms Listener Servlet for creating the Forms Runtime process.
- F. Lightweight Web listener for testing forms in Forms Builder.

Answer: C, F

Question: 111

You are running the Employees form in debug mode and stepping through a procedure (as shown in the exhibit).



You know that the stored function RAISE_SALARIES performs the correct calculation. Which Forms Builder menu item from the Debug menu should you select to position the marker on the line of code that begins with?

IF :employees.salary > 2000

- A. Go
- B. Stop
- C. Step out
- D. Step Into
- E. Run to Cursor

Answer: E

Question: 112

How can you modify a text item so that only numeric keystrokes are accepted in the item at run time?

- A. This cannot be accomplished.
- B. Set a numeric format mask to that text item.
- C. Create a bean area in place of the text item.

Exam Name:	Oracle9i Forms Developer: New Features		
Exam Type:	Oracle		
Exam Code:	1Z0-140	Total Questions	129

- D. Create a When-Validate-Item trigger on the text item.
- E. Set the implementation class property of the item to a pluggable Java component class.

Answer: A

Question: 113

Which Forms objects must be managed using special support that is specifically provided by JDAPI? (Choose all that apply)

- A. Blocks
- B. List items
- C. Menu roles
- D. Menu items
- E. Property classes

Answer: B, C, E

Question: 114

A consultant gave you a PAYROLL.ENV file that contains the search path for the Payroll Forms application modules. You must now customize the existing implementation of Forms Services. How can you do this without affecting the configuration of your other Forms applications?

- A. Place the PAYROLL.ENV file in the same folder as your DEFAULT.ENV file. Delete DEFAULT.ENV and rename PAYROLL.ENV as DEFAULT.ENV.
- B. Place the PAYROLL.ENV file in the same folder as your DEFAULT.ENV file. Edit the Forms Servlet configuration file and set envfile=Payroll.env.
- C. Copy the Forms Servlet configuration file to a new "Payroll" Forms Servlet configuration file. Edit the "Payroll" Forms Servlet configuration file, and set envfile=Payroll.env. Update the OC4J configuration file, and set the configFileName property to the name of the new "Payroll" Forms Servlet configuration file.
- D. Copy the Forms Servlet configuration file to a new "Payroll" Forms Servlet configuration file. Edit the "Payroll" Forms Servlet configuration file and set envfile=Payroll.env. Edit the Oracle HTTP Server configuration and create a virtual path mapping for the new "Payroll" Forms Servlet configuration file.
- E. Place the PAYROLL.ENV file in the same folder as your DEFAULT.ENV file. Edit the Forms Servlet configuration file. Add a Configuration section called [Payroll]. For [Payroll], set envfile=Payroll.env.

Answer: E

Question: 115

You plan to test Forms applications by running them directly from the Forms Builder. You are using the default application URL. What action must you first take?

- A. Start the Forms CGI.
- B. Start an OC4J instance.
- C. Start a Forms Runtime process.
- D. Start Oracle Application Server Forms Services.
- E. Start the Oracle HTTP Server.

Answer: B

Question: 116

Which Forms objects must be managed using special support that is specifically provided by JDAPI? (Choose all that apply)

Exam Name:	Oracle9i Forms Developer: New Features		
Exam Type:	Oracle		
Exam Code:	1Z0-140	Total Questions	129

- A. Blocks
- B. List items
- C. Menu roles
- D. Menu items
- E. Property classes

Answer: B, C, E

Question: 117

PAYROLL.FMX has two user defined parameters: EMPNO and NEWSAL. How are the parameter values passed to the Forms Runtime Engine?

- A. The Forms CGI passes user-defined parameters from the URL.
- B. The Forms Servlet passes user-defined parameters from the base HTML file.
- C. The Forms Listener Servlet accepts user-defined parameters directly from the URL.
- D. The Forms CGI accepts user-defined parameters posted in the CGI-generated HTML file.
- E. The Forms Listener Servlet passes user-defined parameters that were included in the Forms Servletgenerated HTML file.
- F. The Forms Servlet passes user-defined parameters that were included in the Forms Listener Servletgenerated HTML file.

Answer: E

Question: 118

You have updated your FORMSWEB.CFG.cfg file with the following lines:

```
[pay]
enfFile=default.env
workingDirectory=/private/apps/pay
[pay.fr]
envFile=french.env
workingDirectory=/private/apps/pay/french
[pay.zh]
envFile=chinese.env
workingDirectory=/private/apps/pay/chinese
```

A user submits this URL: <http://wages.com/servlet/f90servlet=config=pay>

The http request header gives a list of languages in order of preference:

accept-language: de, zh, fr

How is the run-time environment set?

- A. A run-time error message is generate because the [pay.de] section is undefined.
- B. The working directory is /private/apps/pay/chinese, and environment variables set in the CHINESE.ENV are used.
- C. The working directory is /private/apps/pay/french, and environment variables set in the FRENCH.ENV file are used.
- D. The working directory is /private/apps/pay, and environment variables set in the DEFAULT.ENV file are used.

Answer: B

Question: 119

You are running a form that was developed in Forms 6i and has just been upgraded to the latest version of Oracle Forms using the Migration Assistant. The form has not been modified since the upgrade.

Exam Name:	Oracle9i Forms Developer: New Features		
Exam Type:	Oracle		
Exam Code:	1Z0-140	Total Questions	129

You launch an LOV and enter % in the Find box. You realize that the LOV is retrieving a large number of records.

Which statement describes what the LOV does when you click the Cancel button?

- A. Stops retrieving records and closes immediately.
- B. Continues to fetch all records without providing feedback, and then closes.
- C. Stops retrieving records but does not close; allows users to choose a value from the records retrieved so far.
- D. Stops retrieving records and does not allow users to choose a value from the records retrieved so far.

Answer: B

Question: 120

Exhibit:

*****MISSING*****

You are running the Oracle9i Migration Assistant to upgrade the Summit module from Forms 6i. This form does not use base tables, but it contains buttons that users click to start other forms. You supply the required command line arguments to specify the module to upgrade, but you receive the error message that is shown in the exhibit:

What should you do to correct the error?

- A. Specify the USERID= command line arguments because it is also a required argument.
- B. Set to false the default CONNECTTODB property of the Migration Assistant so that a database connection is not needed.
- C. Make sure that the form contains an On-Logon trigger set to "null;" so that the form does not attempt to log on.
- D. Extract the .fmb file from the database because the Migration Assistant cannot upgrade forms that are stored in the database.

Answer: Pending

Question: 121

You are configuring time-zone support for your Oracle Forms application, which is accessed by users working across different time zones. You want to ensure that times committed to the database are "US/Central" times. Which environment variable(s) should you set?

- A. FORMS90_TZFILE (or FORMS_TZFILE) only
- B. FORMS90_DATETIME_LOCAL_TZ (or FORMS_DATETIME_LOCAL_TZ) only
- C. FORMS90_DATETIME_SERVER_TZ (or FORMS_DATETIME_SERVER_TZ) only
- D. FORMS90_DATETIME_LOCAL_TZ and FORMS90_TZFILE (or FORMS_DATETIME_LOCAL_TZ and FORMS_TZFILE)
- E. FORMS90_DATETIME_SERVER_TZ and FORMS90_TZFILE (or FORMS_DATETIME_SERVER_TZ and FORMS_TZFILE)
- F. FORMS90_DATETIME_SERVER_TZ and FORMS90_DATETIME_LOCAL_TZ (or FORMS_DATETIME_SERVER_TZ and FORMS_DATETIME_LOCAL_TZ)

Answer: E

Question: 122

You have a form developed in Forms 6i that has been recently upgraded to the latest version of Oracle Forms. You want to make sure that all the LOVs of the form can be canceled to stop

Exam Name:	Oracle9i Forms Developer: New Features		
Exam Type:	Oracle		
Exam Code:	1Z0-140	Total Questions	129

record retrieval and that all LOVs have the current total of fetched records to be displayed on the status bar.

What must you do?

- A. Set the Interaction Mode property of the Forms module to Yes.
- B. Set the Interaction Mode property of the Forms module to Non-Blocking and the Filter Before Display property of the LOV to Yes.
- C. Change the Cancel Allowed properties of all the LOVs in the form to Yes.
- D. Set the Interaction Mode properties of all the LOVs in the form to Non-Blocking.

Answer: B

Question: 123

You are running a multiple-form application. The Customers form calls the Orders form. When the Orders form launches, it displays orders for only the active customer from the Customers form. Forms exchange data with the :GLOBAL.CUSTOMER_ID variable.

You need to modify the Orders form so that it displays the active customer's orders initially and can later be used to display orders from any customer.

Which two tasks must you perform? (Choose two.)

- A. Remove the call to the EXECUTE_QUERY built-in in the Orders form's When-New-Form-Instance trigger.
- B. Remove all the references to the :GLOBAL.CUSTOMER_ID variable in the Pre-Query trigger of the Orders form.
- C. Remove from the Orders form all references to the :GLOBAL.CUSTOMER_ID variable that is currently used to exchange data between the forms.
- D. In the Customers form, set the ONETIME_WHERE property of the Orders form to refer to the :GLOBAL.CUSTOMER_ID variable, and then invoke the Orders form.
- E. In the When-New-Form-Instance trigger of the Orders form, set the block property of the Orders block to refer to the :GLOBAL.CUSTOMER_ID for the ONETIME_WHERE property, and then call the EXECUTE_QUERY built-in.

Answer: B, E

Question: 124

You want to extend the standard Forms user interface especially for check boxes, list items, radio buttons, and push buttons. You also want to perform client-side validation on text items to reduce network traffic.

How would you accomplish these tasks using Forms features?

- A. Create a bean area for all items that need to be displayed differently or validated at the client side.
- B. Replace the items with GIF images that are developed to customize the user interface, and store all these images at the client side.
- C. Set the implementation class of each item to a Pluggable Java Component that will modify its appearance or allow client-side validation.
- D. Use navigational triggers to enhance the appearance and validation triggers to perform client-side validation.

Answer: C

Question: 125

You are deploying a multiple-language Oracle Forms application and have defined language-specific environment files for English, French, and German. To enable users to access language-specific forms, what action must you take?

Exam Name:	Oracle9i Forms Developer: New Features		
Exam Type:	Oracle		
Exam Code:	1Z0-140	Total Questions	129

- A. Publish individual URLs for English, French, and German users, and use the default configuration.
- B. Publish individual URLs for English, French, and German users, and amend your Forms Web configuration file to specify the language-specific environment file according to an Oracle Forms parameter.
- C. Publish a single URL, and amend your Forms Web configuration file to specify the language-specific environment file according to an Oracle Forms parameter.
- D. Publish a single URL, and amend your Forms Web configuration file to specify the language-specific environment file according to the HTTP header ACCEPT_LANGUAGE parameter.

Answer: D

Question: 126

Your Oracle Forms application is for deployment in the English and Japanese languages. In a text item, the required Maximum Length property for the English implementation is set to a value of 5. You may not alter the Maximum Length property. Select appropriate property values to enable implementation of Japanese double-byte characters in the text item as well.

- A. Query Length property = 20, Maximum Length property = 5
- B. Query Length property = 10, Maximum Length property = 5
- C. Data Length Semantics property = BYTE, Query Length property = 10
- D. Data Length Semantics property = BYTE, Maximum Length property = 5
- E. Data Length Semantics property = CHAR, Maximum Length property = 5
- F. Data Length Semantics property = BYTE, Query Length property = 20
- G. Data Length Semantics property = NULL, NLS_LENGTH_SEMANTICS environment variable is set to a value of BYTE

Answer: E

Question: 127

You are performing consultant work for a company whose SQL*Forms 3.0 application has been obsolete for some time. The IT manager asks you to migrate the application to the latest version of Oracle Forms. What is the most efficient way to perform this task in a supported manner?

- A. Upgrade the application to Forms 6i, then to the latest version of Oracle Forms.
- B. Upgrade the application to Forms 4.5, then to the latest version of Oracle Forms.
- C. Upgrade the application to Forms 5.0, then to Forms 6i, then to the latest version of Oracle Forms.
- D. Upgrade the application to Forms 4.5, then to Forms 6i, then to the latest version of Oracle Forms.
- E. Upgrade the application to Forms 4.5, then to Forms 5.0, then to Forms 6i, then to the latest version of Oracle Forms.
- F. Upgrade the application directly to the latest version of Oracle Forms, using the VERSION=30 compiler option.

Answer: D

Question: 128

Which two are command line arguments of the Oracle Forms Migration Assistant? (Choose two.)

- A. LOG
- B. USERID
- C. CONNECTUSERNAME
- D. GENERATERUNTIME

Exam Name:	Oracle9i Forms Developer: New Features		
Exam Type:	Oracle		
Exam Code:	120-140	Total Questions	129

E. REPORTS_SERVERNAME

Answer: A, B

Question: 129

Which method can be used to extend and customize the functionality of a form by embedding a Java component?

- A. JDAPI
- B. JavaBeans
- C. Java Importer
- D. Java Stored Procedure

Answer: B

End of Document