

Exam Name:	Oracle Application Server 10g:Administration II		
Exam Type	Oracle		
Exam Code:	1Z0-312	Total Questions:	216

Question: 1

You are using XML requests and database triggers to invalidate multiple objects in your OracleAS Web Cache cluster environment. While observing the Web cache performance, you realized that the OracleAS Web Cache is taking a long time to invalidate the requested contents. Which two options could you use to optimize the invalidation criteria and yet achieve the same goal to? Invalidate the multiple objects? (Choose two.)

- A. a value for the BASICSELECTOR element
- B. timeout mechanism for the invalidation process
- C. an invalidation index for the query-string invalidations
- D. a name attribute for the ADVANCEDSELECTOR element
- E. an invalidation coordinator to traverse the cluster members

Answer: C, D

Question: 2

You have configured an OracleAS Cold Failover Cluster Infrastructure environment with two nodes. You are using Oracle Database 10g Automatic Storage Management (ASM) features to manage the database file storage. Because of a hardware failure on the active node, the Web Cache cluster attempts to fail over to the passive node but it fails. What could have caused the failover to fail?

- A. The user sessions are bound to the previously active node.
- B. The ownership of the cached contents in the OracleAS Web Cache could not be changed.
- C. The Cluster Synchronization Services (CSS) daemon was not configured on the passive node.
- D. The Oracle Process Manager and Notification (OPMN) daemon could not start the OracleAS components on the active node.

Answer: C

Question: 3

You have set the allowNewConnections parameter to false and connectionDisallowedURL is not set in the formsweb.cfg file. What happens when a user attempts to establish a connection?

- A. He or she receives an error message indicating bad gateway.
- B. He or she receives an error message indicating page not found.
- C. He or she receives an error message that indicates URL not found.
- D. He or she receives a message that indicates new connections are not allowed, so contact the system administrator.

Answer: D

Question: 4

The following are the details of the two middle-tier installations of the host EDTDR7P1:

1. Business Intelligence and Forms installed in /home/oracle/bi
2. J2EE and Web Cache installed in /home/oracle/j2ee1

You executed the chgiphost command on EDTDR7P1 as follows:

```
[oracle@EDTDR7P1 scripts]$ pwd
/home/oracle/j2ee1/chgip/scripts
[oracle@EDTDR7P1 scripts]$ ./chgiphost.sh -mid
Which middle-tier installation would be considered by the command?
```

- A. the installation mentioned in the ORACLE_HOME environment variable

Exam Name:	Oracle Application Server 10g:Administration II		
Exam Type	Oracle		
Exam Code:	1Z0-312	Total Questions:	216

- B. the installation in the location from where the command is executed
- C. all the instances in the host irrespective of the number of installations
- D. the middle-tier name is not mentioned in command so the command fails

Answer: A

Question: 5

For a nonemulated data source, the cacheScheme property is set to DYNAMIC_SCHEME. What is the implication of this?

- A. The requests return null when requests for connections reach maximum.
- B. The requests for connection are redirected to one of the existing connections in the pool.
- C. After maximum connection limit is reached, request for a new connection waits until the existing connection is released.
- D. A new pooled connection can be created beyond the maximum limit, but each one is automatically closed and freed after use.

Answer: D

Question: 6

The formula used by OracleAS Web Cache to determine the maximum number of file descriptors is shown below:

$\text{Max_File_Desc} = \text{Max_Conn} + \text{WS_Capacity} + \text{Outgoing_Conn} + 100$

Which statement describes the purpose of adding 100 in the formula?

- A. It is the total number of estimated incoming connections.
- B. It is the number of connections reserved for internal use by OracleAS Web Cache.
- C. It is the maximum number of requests to be allowed during a persistent connection.
- D. It is the maximum number of clients that can simultaneously connect to the application Web server.

Answer: B

Question: 7

Why would you need to configure the configFileNames parameter in the web.xml file?

- A. to specify the OC4J configuration file
- B. to specify the Forms Servlet configuration file
- C. to specify the Oracle HTTP listener configuration file
- D. to specify the master HTTP listener configuration file
- E. to specify the JAR file required for the browser to access forms

Answer: B

Question: 8

You are cloning a middle-tier instance from ASHOST1 to ASHOST2. You added the following parameter to the cs.properties file in ASHOST2 during the cloning process:

clone_command_line =oracle.iappserver.iapptop:szl_PortListSelect="{\"YES\",
\"/tmp/staticports.ini\"}

What could be the reason for adding this parameter?

- A. You do not want Oracle Universal Installer to be invoked to clone the instance.
- B. You want the cloned instance to be assigned the ports specified in the staticports.ini file.
- C. You want the clone.pl script to update the staticports.ini file in the source before cloning is completed.

Exam Name:	Oracle Application Server 10g:Administration II		
Exam Type	Oracle		
Exam Code:	1Z0-312	Total Questions:	216

D. You want the prepare_clone.pl script to update the staticports.ini file in the source before cloning is completed.

Answer: B

Question: 9

You want to invalidate documents in OracleAS Web Cache using the following criteria:

1. The HTTP request method is an HTTP POST request method
2. The HTTP POST body contains _language=EN-US
3. The embedded URL parameters are _portlet_id and _provider_id

Which two changes would you make to the webcache.xml file to achieve this type of invalidation? (Choose two.)

- A. Remove the INVALIDATIONINDEX element.
- B. Specify the TYPE attribute to use the value of SUBSTRING.
- C. Specify the BASICSELECTOR element in an invalidation request.
- D. Specify the NAME attribute to use the value of QUERYSTRING_PARAMETER.

Answer: B, D

Question: 10

Users in your OracleAS Web cache cluster environment complain that they are getting HTTP 504 error while accessing applications that are developed using J2EE. While investigating the reason for this, you observe the following:

access_log

144.10.24.231- - [26/Nov/2006:18:22:35 +0530] "POST /jAC5.4//ACUtilities.do HTTP/1.1" 504

416 event_log entry:

[26/Nov/2006:18:22:23 +0530] [warning 14021] [ecid: 8126204353870,0] Origin server drops request.

[26/Nov/2006:18:22:23 +0530] [error 11364] [ecid: 8126204353870,0] Network error response is returned.

What are the two reasons that could have caused these errors reported in the log files? (Choose two.)

- A. The origin server has reached its capacity.
- B. The origin server has reached its queue limit.
- C. The origin server has reached its failover threshold.
- D. There is no load balancer configured in the Web cache cluster.
- E. The origin server is not able to forward the requests to a member.

Answer: A, B

Question: 11

You developed a JSP report that depends on the barcode Java classes. You plan to deploy this report on your OracleAS Reports Server. What setting would you do to deploy this report with a paper layout?

- A. Add JAR file to the WAR file.
- B. Add the barcode classes to the WAR file.
- C. Set the <pluginParam> element in reports server settings.
- D. Set the classPath property of the engine element in the server configuration file.

Answer: D

Exam Name:	Oracle Application Server 10g:Administration II		
Exam Type	Oracle		
Exam Code:	1Z0-312	Total Questions:	216

Question: 12

Which three tasks can be accomplished using the OracleBI Discoverer EUL Command Line for Java? (Choose three.)

- A. Creating workbooks.
- B. Creating business area.
- C. Exporting and importing EUL objects.
- D. Granting and revoking Discoverer privileges to users or roles.
- E. Granting and revoking access privileges on workbooks to users.

Answer: C, D, E

Question: 13

You have the following sections mentioned in your formsweb.cfg file:

```
[default]
otherparams=jvmcontroller=newJVM
[ordersApp]
form=orders.fmx
userid=orders/orderspw@orcl
[salesApp]
form=sales.fmx
userid=sales/salespw@orcl
otherparams=jvmcontroller=
```

The forms applications contain Java code and each of these applications executes Java code when a user connects to the application. Which statements are true regarding the usage of JVM Controller by the applications? (Choose all that apply.)

- A. The salesApp application uses in-process JVM.
- B. The ordersApp application uses in-process JVM.
- C. The salesApp application uses a JVM Controller by the name newJVM.
- D. The ordersApp application uses a JVM Controller by the name newJVM.
- E. The ordersApp does not use any JVM Controller until the otherparams=jvmcontroller= or otherparams=jvmcontroller= <name of JVM Controller> parameter is mentioned.

Answer: A, D

Question: 14

You have an OracleAS Identity Management cluster environment with two nodes, NODE1 and NODE2. Because of regular maintenance tasks, you have stopped the Oracle Internet Directory (OID) processes of NODE1 in the cluster. What is the impact of this on the OID processes on the second node?

- A. The OIDMON process starts all OID processes automatically.
- B. The OIDMON process starts all OID processes except the ODISRV process.
- C. The OIDMON process starts all OID processes except the OIDREPLD process.
- D. The OID processes need to be restarted manually by using the OPMNCTL command.

Answer: D

Question: 15

You are working for a company that designs and manufactures electronic goods. The company prefers high-quality JPEG or PNG images in their Web reports instead of GIF images. You want

Exam Name:	Oracle Application Server 10g:Administration II		
Exam Type	Oracle		
Exam Code:	1Z0-312	Total Questions:	216

to specify this as the default image format in your OracleAS Reports Server. How would you achieve this?

- A. Set the REPORTS_DEFAULT_DISPLAY environment variable.
- B. Specify this in the engine element of the server configuration file.
- C. Set the REPORTS_OUTPUTIMAGEFORMAT environment variable.
- D. Set the REPORTS_SERVERMAP parameter in the rwservlet.properties file.

Answer: C

Question: 16

While attempting to start OracleAS Web cache in an OracleAS Web cache cluster environment you observe that the Web cache did not start and created a core file. While investigating the reason you find some more details in the event log and the core dump file as shown in the Exhibit.

Exam Name:	Oracle Application Server 10g:Administration II		
Exam Type	Oracle		
Exam Code:	1Z0-312	Total Questions:	216

```

core 'core.webcached.29292.uxhades2
da.1140.1009.1152094520' of 29292:
/opt/app/ias/a917dev101202/webcach
e/bin/webcached -OPMN -COREOK -U
159
----- lwp# 1 / thread#
1 -----
000b3e58 Net_Init (24bb, 12, 2,
ffbef420, 24fa7c, 0) + d0
00062ecc Shared_Init (2, ffbeecd0,
0, ffffffff8, 12, ffbefcf1) + 1f0
0003ac30 main (5, ffbefd54,
ffbefd6c, 340000, 0, 0) + 190
0003a2a0 _start (0, 0, 0, 0, 0, 0)
+ 108
----- lwp# 2 / thread#
2 -----
fe29f4b0 _signotifywait (ff0ec000,
ff3e0b98, 0, c, 0, 0) + 8
ff0d1c90 thr_yield (0, 0, 0, 0, 0,
0) + 8c
----- lwp# 3
-----
fe29d054 _door_return (4,
ff0ec000, ff0ed678, 3, ff0ec000,
1) + 10
ff0ca380 _lwp_start (fe185d98, 0,
6000, ffbef65c, 0, 0) + 18
ff0d1c90 thr_yield (0, 0, 0, 0, 0,
0) + 8c
----- lwp# 4
-----
ff0d9300 private__lwp_cond_wait
(fde0bd98, ff0ecd74, ff0ec000, 3,
ff0ec000, 1) + 8
ff0ca380 _lwp_start (fde0bd98, 0,
0, 0, 0, 0) + 18
ff0d1c90 thr_yield (0, 0, 0, 0, 0,
0) + 8c
----- thread#

```

From both the files, you realized that the Web cache has crashed while starting up. What action you would consider to avoid this?

- A. adding another member to the Web cache cluster
- B. changing the Web cache process owner to a non-ROOT user
- C. reconfiguring the Web cache cluster to include a load balancer
- D. reconfiguring the /etc/hosts file to use the unique physical host name

Exam Name:	Oracle Application Server 10g:Administration II		
Exam Type	Oracle		
Exam Code:	1Z0-312	Total Questions:	216

Answer: D

Question: 17

In your OracleAS Identity Management cluster environment:

You are using the Oracle Real Application Clusters (RAC) to ensure high availability of OracleAS Metadata Repository. There are two instances of the database that are running on two different nodes in RAC. During routine checks, you realized that the primary node in the OracleAS Identity Management cluster environment has failed, thereby causing the Directory Replication server (oidrepld) and the Directory Integration and Provisioning server (oidsrv) to fail.

Which action would the OID Monitor process (OIDMON) perform so that the OID user requests will continue to get processed?

- A. redirect the client requests to the secondary node
- B. activate the DIP server on the secondary node in the RAC
- C. remap the virtual host name and the virtual IP to the secondary node
- D. automatically start the processes on the secondary node after 5 minutes

Answer: D

Question: 18

You have an OracleAS Database-based farm that runs on a Linux system. The farm has various Oracle Application Server instances associated with it. You have a stand-alone J2EE and Web Cache instance that is not associated with the Metadata Repository, installed recently on a Windows system. What is the possibility of associating the instance with the farm?

- A. It is possible to associate the instance with the farm as it is.
- B. It is possible only if the instance is reinstalled on a Linux or Solaris system.
- C. It is possible only if the instance is reinstalled to use a database-based repository.
- D. It is possible only if the instance is reinstalled to use a database-based repository on a Linux or Solaris system.

Answer: A

Question: 19

You want Oracle HTTP Server performance metrics and performance metrics from multiple OC4J components to be displayed in the form of HTML tables for better readability. Which tool would you use for this purpose?

- A. dcmctl
- B. opmnctl
- C. dmstool
- D. AggreSpy

Answer: D

Question: 20

You are using a two-node cluster in your OracleAS Cold Failover Cluster (Infrastructure) environment. The environmental details are listed below:

Virtual host name: my-vhost1.us.oracle.com

Virtual IP: 10.156.20.200

Node 1 (Primary Node)

Physical IP: 10.156.20.201

Node 2 (Secondary Node)

Physical IP: 10.156.20.202

Exam Name:	Oracle Application Server 10g:Administration II		
Exam Type	Oracle		
Exam Code:	1Z0-312	Total Questions:	216

On the primary node, you executed the following command:

```
$ ifconfig ge0 removeif 10.156.20.200
```

And, then you executed the following command on the secondary node after adding entry to the /etc/hosts file:

```
$ ifconfig ge0 addif 10.156.20.200 up
```

What is the reason for executing this command?

- A. You want to redirect client requests to the secondary node.
- B. You want to configure the virtual IP address on the secondary node because the primary node has failed.
- C. You want to remove the primary node from the cluster and want the secondary node to be the primary node.
- D. You want to start the OracleAS components and the OracleAS Infrastructure database on the secondary node.

Answer: B

Question: 21

You are using the JVM metric table to analyze overall JVM performance for the applications in an OC4J instance. Which information can be obtained from the JVM metric table?

- A. the mode in which JVMs are running
- B. information about threads and heap memory allocation
- C. total memory consumed by all the JVMs running in the system
- D. total number of OC4J processes that are running in the system

Answer: B

Question: 22

The Failover threshold is the maximum number of failed requests that a Web cache cluster member can have. Which statement is true regarding a Web cache cluster member that has reached the failover threshold?

- A. The member is restarted automatically.
- B. The member is considered to have failed.
- C. The member forwards incoming requests to other members.
- D. The member transfers the ownership of its contents to another member.

Answer: B

Question: 23

For maintenance purposes, you want to disable the Discoverer Portlet Provider. Which two statements are true? (Choose two.)

- A. All users performing Edit Defaults operation or Customize operations are disconnected.
- B. A user can use the Edit Defaults option as well as the Customize option for existing portlets.
- C. Scheduled refreshes that are running can complete. However, scheduled refreshes that have not yet started will not run.
- D. All users performing Edit Defaults operations or Customize operations are allowed to complete the operations, but no new Discoverer portlets can be added to Portal Pages.

Answer: C, D

Question: 24

Exam Name:	Oracle Application Server 10g:Administration II		
Exam Type	Oracle		
Exam Code:	1Z0-312	Total Questions:	216

You are using an OracleAS Web Cache cluster with two members of the same version of OracleAS Web Cache. While attempting to propagate the invalidation message, the Web Cache cluster realized that the invalidation coordinator was not reachable. Which action would the cluster perform?

- A. It errors out and does not propagate the invalidation messages.
- B. It continues to propagate the invalidation messages to other available members.
- C. It considers the cache cluster member that is acting as an invalidation coordinator to have failed.
- D. It enqueues the invalidation messages with one of the available members and the messages will be written when the invalidation coordinator is available.

Answer: A

Question: 25

You configured a Distributed Configuration Management (DCM)-Managed OracleAS Cluster. Which two statements are true about the cluster? (Choose two.)

- A. It contains a collection of Oracle Application Server instances with different types of application deployments.
- B. It requires administrators to manually configure each Oracle Application Server instance within it.
- C. It propagates the configuration information across all Oracle Application Server instances within it.
- D. It contains a collection of Oracle Application Server instances with identical application deployments.

Answer: C, D

Question: 26

You plan to deploy your forms applications on Oracle Application Server. Where would you specify the location of the .fmx file?

- A. It should be specified in the base HTML files.
- B. It should be specified in the formsweb.cfg file.
- C. It should be specified in the PATH environment variable.
- D. It should be specified in the FORMS_PATH environment variable.

Answer: D

Question: 27

Which statement regarding JSP reports with Web layouts is true?

- A. They cannot contain a Java class.
- B. They are executed through the J2EE container.
- C. They cannot be a deployed using a J2EE application.
- D. They are executed through the Oracle Reports engine.

Answer: B

Question: 28

The MaxRequestPerChild directive is set to zero in the httpd.conf file. Which statement describes the effect of this setting?

- A. The child process is not started.

Exam Name:	Oracle Application Server 10g:Administration II		
Exam Type	Oracle		
Exam Code:	1Z0-312	Total Questions:	216

- B. The child process is started but does not handle any request.
- C. The child process is terminated after processing the requests.
- D. The child process is not terminated after processing the requests.

Answer: D

Question: 29

You configured an OracleAS Identity Management cluster environment for your Oracle Application Server users that has two nodes. Because of a hardware failure, the first node, NODE1, failed and the second node, NODE2, is currently being used. After realizing this, you fixed the problem and restarted the first node. But then, you realized that the OIDMON process of the second node, NODE2, failed to start OID processes on the first node automatically. What could have caused this problem?

- A. an inconsistent state of the OracleAS Directory Server
- B. a time discrepancy of more than 250 seconds between the two nodes
- C. failure of the Oracle Directory Integration and Provisioning (ODISRV)
- D. the Directory Replication Server (OIDREPLD) server in the first node not running

Answer: B

Question: 30

You are upgrading a metadata repository in an Oracle Application Server 10g (9.0.4) system to Oracle Application Server 10g (10.1.2). Which three key operations occur as part of this upgrade? (Choose three.)

- A. The new schemas are created.
- B. The existing schemas are re-created.
- C. The existing schemas are upgraded.
- D. The directory representation of the metadata repository is upgraded.
- E. A new tablespace is created to store all the existing schema objects.

Answer: A, C, D

Question: 31

You invoked the Oracle Application Server Repository Creation Assistant for installing the OracleAS Metadata Repository in an existing database as follows:
runRepca -OH /home/OraHome_1 -LOGDIR / home/oraias/repca/logs
Which schema is created in the database to store configuration information for OC4J and Oracle HTTP Server instances, application server instances, OracleAS Clusters, and Farms?

- A. OCA
- B. DCM
- C. ODM
- D. WKSYS
- E. OEM_REPOSITORY

Answer: B

Question: 32

Which statement is true regarding the RELOAD_KEYMAP parameter in the rwservlet.properties file?

- A. It is set if you want the Reports Server to authenticate users.
- B. It is set if you do not want the Reports Server to authenticate users.

Exam Name:	Oracle Application Server 10g:Administration II		
Exam Type	Oracle		
Exam Code:	1Z0-312	Total Questions:	216

- C. It is used to specify whether to reload the cgicmd.dat file for each report request.
D. It is used to specify the location of dynamically generated images such as charts.

Answer: C

Question: 33

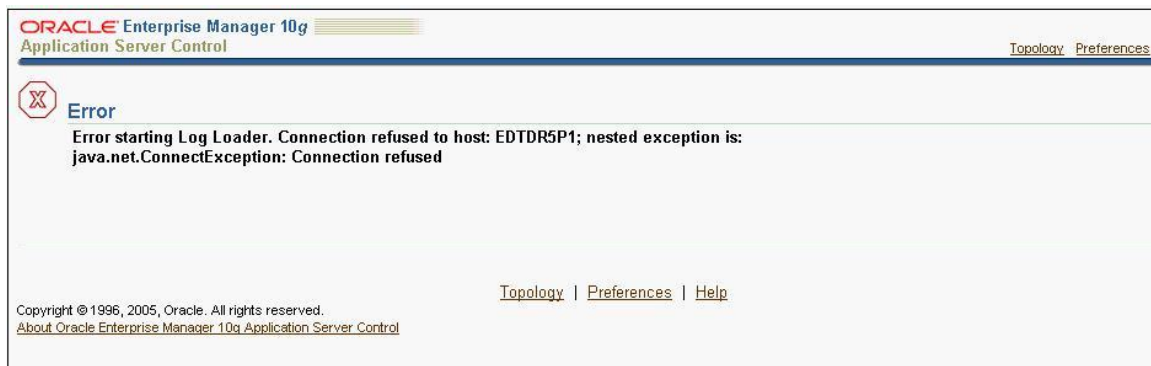
While configuring the communication protocol for OracleBI Discoverer Plus, you select the Secure Tunneling protocol. What implication will this have on the communication between Discoverer client sessions and the application server?

- A. HTTPS will be used for secure access via a firewall.
B. Java Remote Method Protocol (JRMP) will be used within a firewall.
C. JRMP will be used when a connection is made from outside the firewall.
D. HTTP tunneling will be used when a connection is made from outside the firewall.

Answer: A

Question: 34

The Log Loader was down and you received the error while starting the Log Loader.



What could be the reason for this error?

- A. The Log Loader could not access the log.xml file present in the \$ORACLE_HOME/diagnostics/config/logs directory.
B. There are errors in the registration file of one or more components.
C. The size of the log.xml file exceeded the maximum segment size.
D. There is an error in the Log Loader configuration file logloader.xml.

Answer: D

Question: 35

Exhibit.

Exam Name:	Oracle Application Server 10g:Administration II		
Exam Type	Oracle		
Exam Code:	1Z0-312	Total Questions:	216

ORACLE Enterprise Manager 10g
Application Server Control

Farm > Application Server: bi.edtdr5p1.us.oracle.com >

OC4J: OC4J_BI_Forms

[Home](#) [Applications](#) [Administration](#)

General



Status	Up	Stop Restart
Start Time	Nov 17, 2006 4:48:06 AM	
Virtual Machines	<u>4</u>	

JDBC Usage

Open JDBC Connections	2
Total JDBC Connections	100
Active Transactions	0
Transaction Commits	0
Transaction Rollbacks	0

Related Link [All Metrics](#)

[Home](#) [Applications](#) [Administration](#)

What does the value 4 in Virtual Machines indicate?

- A. the number of islands
- B. the number of OC4J processes
- C. the number of OC4J instances in the middle-tier instance
- D. the number of EJB methods that are currently being executed

Answer: B

Question: 36

Exhibit:

Exam Name:	Oracle Application Server 10g:Administration II		
Exam Type	Oracle		
Exam Code:	1Z0-312	Total Questions:	216

ORACLE Enterprise Manager 10g
Application Server Control

Logs Topology Preferences Help

Farm > Application Server: bi.edt5p1.us.oracle.com >

Forms

Overview **User Sessions** Configuration Environment JVM Controllers Forms Utility

Forms User Sessions provides the ability to monitor and trace the Forms Sessions belonging to this Forms Instance. Page Refreshed Sep 7, 2006 6:41:46 AM

Total Memory Usage (%)
Private 0.4792
Shared 0.9696
Total 1.4488

Search User Name Go

Stop Trace Group debug Trace ON Trace OFF

Select All | Select None

Select	Process ID	CPU Usage (%)	Private Memory Usage (%)	IP Address	User Name	Connect Time	Trace Group	View Trace Log	Configuration Section
<input type="checkbox"/>	8920	0.100	0.4792	152.69.167.22	BIUSER	Thu Sep 7 06:40:51 2006 EDT	OFF		default

Overview **User Sessions** Configuration Environment JVM Controllers Forms Utility

Related Links

Which statement regarding the effect of the em_mode parameter setting in the default section of the formsweb.cfg file is true?

- A. The parameter will not have any effect on the listing of user sessions.
- B. The parameter setting represents the number of user sessions to be listed.
- C. The parameter is currently set to 1. If changed to 0, no user sessions will be listed.
- D. The parameter is currently set to 0. If changed to 1, no user sessions will be listed.

Answer: C

Question: 37

You have installed the OracleAS Web Cache cluster with one member. You want to add one more member to the cluster. Which two requirements should the new Web cache member meet before inclusion in the cluster? (Choose two.)

- A. It should be a single-instance cluster.
- B. It should have an administration port that is different from that of the existing member.
- C. It should have the same administration port as that of the existing member.
- D. It should have the same administrator password as that of the existing member.

Answer: A, D

Question: 38

You issued the following command to start the instantiation process for your standby site:

```
ASGCTL> connect asg ias_admin/welcome1
ASGCTL> set primary database sys/testpwd@prod_db
ASGCTL> instantiate topology to standby1
```

Which two statements are true? (Choose two.)

Exam Name:	Oracle Application Server 10g:Administration II		
Exam Type	Oracle		
Exam Code:	1Z0-312	Total Questions:	216

- A. It makes standby site configurations and data identical to those of the production site.
- B. It mirrors only the configuration information about all the Oracle homes in Oracle Application Server.
- C. It finds all the Oracle homes that are involved in the topology of the production and standby sites, and verifies the farm definitions.
- D. It makes standby site the production site, after the standby site is synchronized with the production site.

Answer: B, C

Question: 39

Which statement is true regarding an OC4J island?

- A. It is the logical grouping of OC4J instances.
- B. It cannot span across multiple application server instances.
- C. It enables you to determine which OC4J processes would replicate the application state.
- D. It is the term that refers to an application server instance that participates in an OracleAS Cluster.

Answer: C

Question: 40

The long-running transactions in your EJB application are rolled back due to transaction time out error. You want to increase the maximum time allowed for the transactions to finish before they are rolled back. What can you do to achieve this?

- A. Decrease the value of the session-timeout parameter in the web.xml file.
- B. Increase the value of the max-tx-retries parameter in the orion-ejb-jar.xml file.
- C. Increase the value of the pool-cache-timeout parameter in the orion-ejb-jar.xml file.
- D. Increase the value of the transaction-config timeout parameter in the server.xml file.
- E. Decrease the value of the transaction-config call-timeout parameter in the orion-ejb-jar.xml file.

Answer: D

Question: 41

Which option makes the cached data consistent across all caches in a Web Cache cluster environment?

- A. storing popular objects in all caches
- B. using one set of cache rules for all cache cluster members
- C. using one set of invalidation rules for all cache cluster members
- D. using an external load balancer to distribute the client request across caches

Answer: C

Question: 42

In your OracleAS Identity Management cluster environment:

1. You are using the Oracle Real Application Clusters (RAC) to ensure high availability of OracleAS Metadata Repository.
 2. There are two instances of the database that are running on two different nodes in RAC
- On Friday morning, OID users in your OracleAS environment complain that their sessions are disconnected and they are not able to connect again.

Exam Name:	Oracle Application Server 10g:Administration II		
Exam Type	Oracle		
Exam Code:	1Z0-312	Total Questions:	216

While investigating the reason, you observe that one of the nodes in the RAC is shut down for regular maintenance activities and the user sessions did not fail over to the second node in the RAC, thus causing the problem with the user sessions.

Which option would you consider to avoid this problem in future?

- A. creating an interconnect between the RAC nodes to propagate the client requests
- B. configuring load balancer in the tnsnames.ora file to distribute the connections between the RAC nodes
- C. configuring the Connect-Time Failover (CTF) in the listener.ora file to enable connection failover between the RAC nodes
- D. configuring Transparent Application Failover (TAF) in the tnsnames.ora file to enable request failover between the RAC nodes

Answer: D

Question: 43

The Oracle Diagnostic Logging (ODL) log file log.xml has reached the maximum segment size. Which two statements are correct in this scenario? (Choose two.)

- A. The component stops generating logs to the log.xml file until the file is removed manually.
- B. The older contents of the log.xml file are deleted to reduce the size to below the maximum segment size.
- C. The older segment files are removed automatically to keep the total size under the specified limit if the directory size reaches the maximum.
- D. The log.xml file is renamed and a new log.xml file is created automatically at the generation of the new diagnostic message.

Answer: C, D

Question: 44

Developers in your company created the forms application executables in the Windows platform, whereas your Oracle Application Server is running on the Linux platform. As a Web administrator, you recompiled forms application executables and binaries on the Linux platform before deploying the application. Where would you store the new executables and binaries?

- A. in a directory specified by the CLASSPATH variable
- B. in a directory included in the FORMS_PATH variable
- C. in a directory specified by the ORACLE_BASE variable
- D. in a directory specified by the LD_LIBRARY_PATH variable

Answer: B

Question: 45

Identify the installation that can be cloned without any customization.

- A. J2EE and Web Cache middle-tier installation, which is in a farm that is connected to a file-based repository
- B. J2EE and Web Cache middle-tier installation, which is part of an OracleAS Cluster that is connected to OracleAS Metadata Repository
- C. a middle-tier installation that is associated with an instance of OracleAS Infrastructure installed on a different host
- D. an OracleAS Infrastructure installation containing OracleAS Metadata Repository and Identity Management in a single host
- E. a middle-tier installation that is associated with an instance of OracleAS Infrastructure on the same host

Exam Name:	Oracle Application Server 10g:Administration II		
Exam Type	Oracle		
Exam Code:	1Z0-312	Total Questions:	216

Answer: C

Question: 46

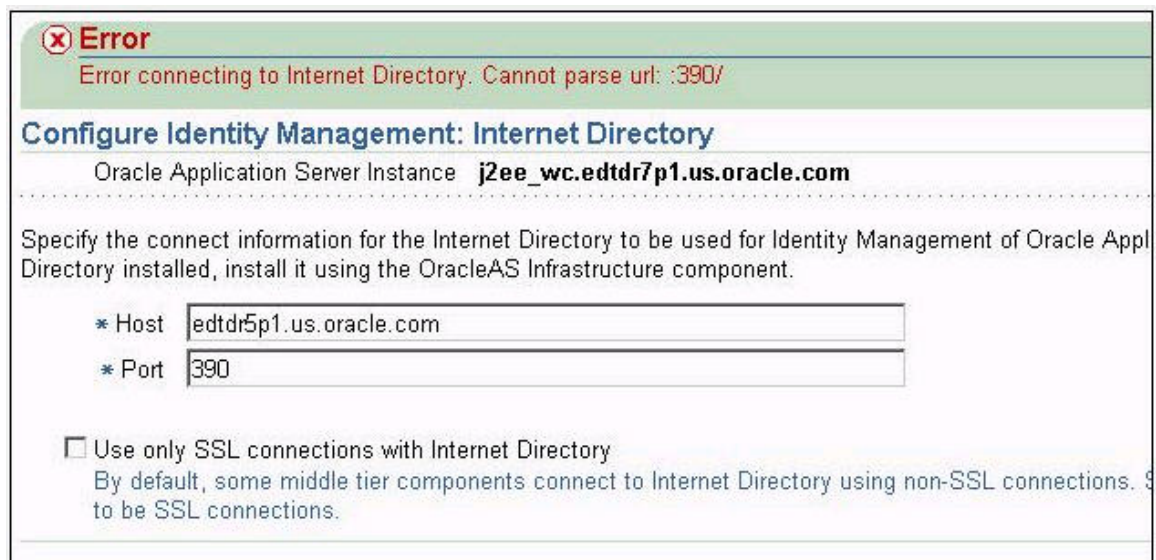
You have an Identity Management installation using a metadata repository. Your Business Intelligence and Forms middle-tier instance is using this Identity Management installation. You plan to move the metadata repository to a new host as the current host is overloaded. Which two statements are true regarding the new metadata repository that you are planning to create on a new host? (Choose two.)

- A. The new host can have a different operating system (OS) than the old host.
- B. The new metadata repository cannot be created using Oracle Universal Installer.
- C. The new metadata repository can use a different database listener port than the original.
- D. The new metadata repository must use the same Oracle home path, data file location, SID, and global database name as the original metadata repository.

Answer: C, D

Question: 47

Exhibit:



Error
Error connecting to Internet Directory. Cannot parse url: :390/

Configure Identity Management: Internet Directory

Oracle Application Server Instance **j2ee_wc.edtdr7p1.us.oracle.com**

Specify the connect information for the Internet Directory to be used for Identity Management of Oracle Application Server Instance installed, install it using the OracleAS Infrastructure component.

* Host

* Port

☐ Use only SSL connections with Internet Directory
By default, some middle tier components connect to Internet Directory using non-SSL connections. Select this checkbox to be SSL connections.

Your attempt to configure a new J2EE and Web Cache instance to use Oracle Identity Management failed with an error. What could be the reason for this error?

- A. The port number provided by you is wrong.
- B. The Oracle Identity Management instance is not available and is stopped.
- C. The new instance is not configured to use OracleAS Metadata Repository.
- D. The name of the host, which contains the Internet Directory, is not prefixed with database service name.

Answer: B

Question: 48

Exhibit:

Exam Name:	Oracle Application Server 10g:Administration II		
Exam Type	Oracle		
Exam Code:	1Z0-312	Total Questions:	216

The screenshot shows the Oracle Enterprise Manager 10g Application Server Control interface. The breadcrumb trail is 'Farm > Application Server: bi.edtldr5p1.us.oracle.com >'. The 'Web Cache' component is selected. The 'General' tab is active, displaying a status icon (a blue square with a green checkmark) and buttons for 'Stop' and 'Restart'. The status is 'Up', with 'Up Since' being 'Nov 28, 2006 6:20:12 AM'. Other metrics shown are: CPU Usage (%) at 0.00, Memory Usage (MB) at 11.60, Origin Servers at 1 (with an up arrow icon), Cache Size Limit (MB) at 500.00, Cache Size (MB) at 43.83, and Cached Documents at 51. A 'Related Link' for 'All Metrics' is provided at the bottom. Navigation tabs for 'Home', 'Performance', and 'Administration' are visible at the top and bottom of the main content area.

Which statement is correct regarding memory allocation to cache for the Oracle Web Cache component?

- A. 11.6 MB is allocated initially at the startup of the Oracle Web Cache component and it can grow up to 43.83 MB.
- B. 500 MB is allocated initially at the startup of the Oracle Web Cache component and extra memory is deallocated when it is not in use.
- C. 43.83 MB is allocated initially at the startup of the Oracle Web Cache component and it can grow up to 500 MB.
- D. 50 MB is allocated initially at the startup of the Oracle Web Cache component and it can grow up to 500 MB.

Answer: D

Question: 49

You issued the following command to start the OracleAS Guard server on all the Oracle homes on the production and standby sites:

```
opmnctl startproc ias-component=DSA
```

What does this command accomplish?

- A. It regularly checks whether all the OracleAS components are running without any errors.
- B. It regularly checks whether the OracleAS Guard servers are running on all the OracleAS instances.
- C. It regularly checks for the standby and production site OracleAS instances and synchronizes the information.

Exam Name:	Oracle Application Server 10g:Administration II		
Exam Type	Oracle		
Exam Code:	1Z0-312	Total Questions:	216

D. It regularly checks for all the OracleAS instances running on the production site. In case of a failure, it switches to the standby site.

Answer: B

Question: 50

You added the following entry in the default section of the formsweb.cfg file in your middle tier:
serverURL=/forms/frmservlet/session

What could be the reason for adding this entry? (Choose two.)

- A. to enable user sessions to access the forms
- B. to disable user sessions to access the forms
- C. to enable session-level logging of Forms Servlet
- D. to cause the Listener Servlet to write log messages to the servlet log file
- E. to restrict the users to use only the specified string in their URL to access the forms

Answer: C, D

Question: 51

Which two statements correctly describe features of an OracleAS Cold Failover Cluster (Infrastructure) environment? (Choose two.)

- A. The virtual IP address is associated with the active node.
- B. Cluster nodes share a single storage device.
- C. The OracleAS software is installed on all cluster nodes.
- D. The OracleAS components run on all cluster nodes.

Answer: A, B

Question: 52

You enabled the Log Loader that was disabled. However, the Log Loader is still not functioning. What could be the reason for this?

- A. The Log Loader was not started explicitly after the enabling process.
- B. All the Oracle Application Server components that periodically update the log repository were not started explicitly after the enabling process.
- C. One or more Oracle Application Server components that periodically update the log repository are not ODL (Oracle Diagnostic Logging) configured.
- D. One or more Oracle Application Server components that periodically update the log repository have an error in their component registration file.

Answer: A

Question: 53

You want to install the OracleAS Cold Failover Cluster on two nodes, NODE1 and NODE2. Before installing, you set the VIRTUAL_HOST_NAME environmental variable on NODE1. Why would you set this variable?

- A. to configure the load balancer on this node
- B. to configure this node as the passive node in the cluster
- C. to configure the Oracle HTTP Server (OHS) on this node
- D. to perform the installation from this node onto the shared disk

Answer: D

Exam Name:	Oracle Application Server 10g:Administration II		
Exam Type	Oracle		
Exam Code:	1Z0-312	Total Questions:	216

Question: 54

Which tasks are performed by the OracleAS Web Cache cluster after it considers a cache cluster member to have failed after it reached the failover threshold? (Choose all that apply.)

- A. restarting the failed cache cluster member
- B. reassigning the ownership of the cache contents
- C. failing over to another cluster member that is active
- D. recalculating the relative capacity of the remaining members

Answer: B, D

Question: 55

You want to remove entries of an OracleAS instance from the Oracle Internet Directory. Which tool would you use for this purpose?

- A. oidctl
- B. lsnrctl
- C. opmnctl
- D. deconfig

Answer: D

Question: 56

Fill in the blanks:

1. The changes to _____ file take effect when you restart the OC4J instance.
2. The changes to _____ file take effect when you restart the HTTP listener.
3. The changes to _____ file take effect when a user invokes a URL to request a Forms application.

Identify the option that matches the correct configuration files to the appropriate sentences.

- A. 1 - default.env
2 - web.xml
3 - forms.conf
- B. 1 - ftrace.cfg
2 - formsweb.cfg
3 - web.xml
- C. 1 - forms.conf
2 - basejini.htm
3 - httpd.conf
- D. 1 - web.xml
2 - oracle_apache.conf
3 - formsweb.cfg

Answer: D

Question: 57

You deployed a forms application related to the Human Resource (HR) department in the EDTechServ host where the middle-tier instance is running. You plan to enable Single-Sign On (SSO) feature for this application. To achieve this, you added the following parameters to the formsweb.cfg file in your middle-tier:

```
[hrApp]
form=hrFmx.fmx
ssoMode=true
```

Exam Name:	Oracle Application Server 10g:Administration II		
Exam Type	Oracle		
Exam Code:	1Z0-312	Total Questions:	216

ssoDynamicResourceCreate=true

ssoCancelURL=http://EDTechServ.oracle.com/help/what_is_wrong.html

ssoErrorURL=http://EDTechServ.oracle.com:7779/servlet/customRADcreation.jsp

Which statement is true regarding this configuration?

- A. The Forms server displays an HTML form where the user can create a Resource Access Descriptors(RAD) entry dynamically if it is missing.
- B. The application user would be redirected to the customRADcreation.jsp page when your attempt to create a RAD entry fails.
- C. The application user would be redirected to the what_is_wrong.html page when a RAD entry is missing in Oracle Internet Directory.
- D. The application user would be redirected to the customRADcreation.jsp page when a RAD entry is missing in Oracle Internet Directory.

Answer: A

Question: 58

Exhibit:

Multiple VM Configuration

☒ **TIP** If OC4J is running, newly added OC4J Clusters and associated processes will be automatically started.

Clusters(OC4J)

Select	Cluster(OC4J) Name	Number of Processes
<input checked="" type="radio"/>	default_island	3
<input type="radio"/>	tech_island	2

You made changes to the island configuration. Where would this island configuration be stored?

- A. web.xml
- B. opmn.xml
- C. iasconfig.xml
- D. orion-web.xml

Answer: B

Question: 59

Which middle-tier installation type can be clustered using DCM repository?

- A. Portal and Wireless
- B. J2EE and Web Cache
- C. Business Intelligence and Forms
- D. Business Intelligence and Forms without the Portal and Wireless component configured

Answer: B

Question: 60

Which two tools can be used to create an OracleAS cluster? (Choose two.)

- A. DCMCTL
- B. LSNRCTL

Exam Name:	Oracle Application Server 10g:Administration II		
Exam Type	Oracle		
Exam Code:	1Z0-312	Total Questions:	216

- C. OPMNCTL
- D. OIDADMIN
- E. Application Server Control

Answer: A, E

Question: 61

Which two statements about running a JSP report are true? (Choose two.)

- A. You cannot run a JSP report with Web layout using rwrn or rwclient.
- B. You cannot run a JSP Web report to a destination format other than HTML.
- C. You can convert a JSP report to RDF format to create a paper layout.
- D. You should use rwservlet to run a JSP report only if it has paper layout.
- E. You can put a JSP in a directory specified in REPORTS_PATH and then run the JSP report.

Answer: B, D

Question: 62

You want to configure OracleAS Infrastructure where two nodes share a storage device on which the software is installed. One node remains active and a virtual IP address is associated with it. If the currently active node goes down, the other node has to be made active. Which is the correct implementation for this purpose?

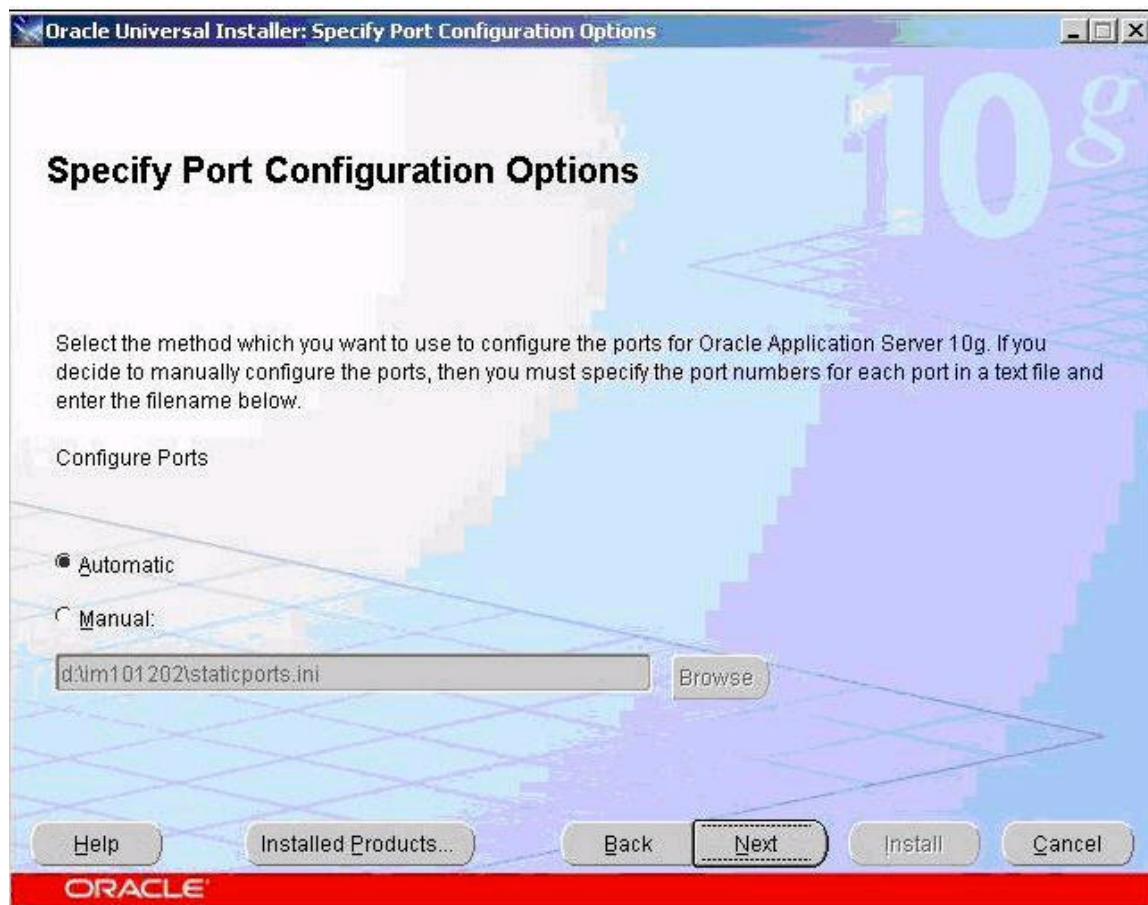
- A. state replication
- B. OracleAS Cluster
- C. active-active topology
- D. OracleAS Cold Failover Cluster

Answer: D

Question: 63

Exhibit:

Exam Name:	Oracle Application Server 10g:Administration II		
Exam Type	Oracle		
Exam Code:	1Z0-312	Total Questions:	216



You have an OracleAS Infrastructure (9.0.4) instance running on a host. You plan to install OracleAS Infrastructure (10.1.2) on the same host using custom ports. You invoked Oracle Universal Installer (OUI) to install the infrastructure. The installer does NOT display the "Specify Port Configuration Options" window (shown in the Exhibit) to provide custom ports. What could be the reason for this?

- A. The staticports.ini file is missing.
- B. The permission to update the staticports.ini file is denied.
- C. The installer is trying to upgrade the OracleAS Infrastructure (9.0.4) using the same ports.
- D. The "Specify Port Configuration Options" window appears only during the middle-tier installation.

Answer: C

Question: 64

You plan to change the host name of the machine where an OracleAS Portal and Wireless middle-tier instance is running. You performed the following steps to achieve this purpose:

1. Shut down the middle-tier instances.
2. Ensured that the Oracle Internet Directory being used by the middle tier is running.
3. Changed the host name on the operating system.
4. Updated the middle-tier instance using the chgiphost command
5. Restarted middle-tier instances.

Exam Name:	Oracle Application Server 10g:Administration II		
Exam Type	Oracle		
Exam Code:	1Z0-312	Total Questions:	216

Are you required to perform any other step manually after having performed the steps listed above if yes, which step would you perform?

- A. Run the root.sh script.
- B. Update the portlist.ini file.
- C. There is no need to perform any other step.
- D. Update the OracleAS Portal Web provider URLs with the new host name.
- E. Restart the listener on the database machine containing the Metadata Repository.

Answer: D

Question: 65

Which two statements are true regarding message correlation? (Choose two.)

- A. Execution Context ID must be avoided for message correlation.
- B. The first-fault component can be identified by message correlation.
- C. Message correlation data establishes a clear path for diagnostic messages across components.
- D. By default, all Oracle Application Server components support the generation of message correlation data.

Answer: B, C

Question: 66

You want to use Business Process Execution Language (BPEL) to deploy a business process in an OracleAS Active-Active cluster environment that has two nodes. Because it is a stateless application, which component is used as its dehydration store to store the process state information?

- A. an Oracle directory
- B. an Oracle database
- C. an OracleAS Web cache
- D. an OracleAS Metadata Repository

Answer: B

Question: 67

You have a middle-tier installation on the as1m1.us.oracle.com host and cloned this to the as2m2.us.oracle.com host. You further cloned the installation from as2m2.us.oracle.com to as3m3.us.oracle.com. The cloning was successful, but you are not able to start Application Server Control on as3m3.us.oracle.com. Following is the status:

```
[oracle@as3m3 bin]$ emctl status iasconsole
```

```
TZ set to US/Eastern
```

```
Oracle Enterprise Manager 10g Application Server Control Release 10.1.2.0.2
```

```
Copyright (c) 1996, 2005 Oracle Corporation. All rights reserved.
```

```
http://as1m1.us.oracle.com:1156/emd/console/aboutApplication
```

```
EM Daemon is not running.
```

Why are you not able to start Application Server Control?

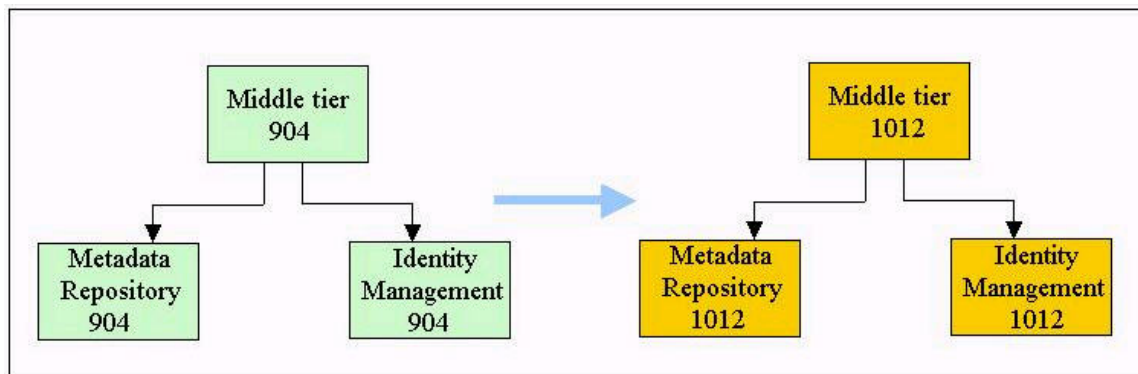
- A. The installation on the as1m1.us.oracle.com host is down.
- B. The installation on the as2m2.us.oracle.com host is down.
- C. The target.xml and emd.properties files are not updated on the as2m2.us.oracle.com host.
- D. The portlist.ini file is not updated on the as3m3.us.oracle.com host.
- E. The installations on both as1m1.us.oracle.com and as2m2.us.oracle.com are down.
- F. The target.xml and emd.properties files are not updated on the as3m3.us.oracle.com host.

Exam Name:	Oracle Application Server 10g:Administration II		
Exam Type	Oracle		
Exam Code:	1Z0-312	Total Questions:	216

Answer: F

Question: 68

Exhibit:



You want to upgrade your middle tier, Metadata Repository, and Identity Management installations from 9.0.4 to 10.1.2. Which are the three valid paths for the upgrade? (Choose three.)

- A. Middle tier, Metadata Repository, Identity Management
- B. Middle tier, Identity Management, Metadata Repository
- C. Identity Management, middle tier, Metadata Repository
- D. Identity Management, Metadata Repository, middle tier
- E. Metadata Repository, Identity Management, middle tier

Answer: A, B, C

Question: 69

Which two statements are true regarding the job status repository stored in the database, and specified in the report server configuration file? (Choose two.)

- A. The job status repository is persistent.
- B. The job status repository is created in the cgicmd.dat file.
- C. There can be more than one job status repository mentioned in the configuration file.
- D. The rw_server.sql script needs to be executed to create a table to store the repository.

Answer: A, D

Question: 70

Identify the tasks performed by the clone.pl PERL script on the destination machine during the cloning process. (Choose all that apply.)

- A. It invokes Oracle Universal Installer in clone mode.
- B. It extracts the compressed Oracle home into a directory.
- C. It takes a snapshot of the information required for cloning.
- D. It archives and compresses the Oracle home on the source machine.
- E. It calls the chgiphost command to change the host name and IP number information in the cloned home.

Answer: A, E

Exam Name:	Oracle Application Server 10g:Administration II		
Exam Type	Oracle		
Exam Code:	1Z0-312	Total Questions:	216

Question: 71

You have deployed several applications that are developed using Oracle Forms in your OracleAS environment. You have configured session binding using a session cookie, to be used while accessing the applications. While performing a regular monitoring task, you realized that session binding is not working for the OracleAS Forms Services configuration. Which action would you perform so that session binding is used for Forms Services?

- A. Use the OC4J-based session binding mechanism.
- B. Use the HTTP-based session binding mechanism.
- C. Use the session ID-based session binding mechanism.
- D. Use the embedded URL parameter-based session binding mechanism.

Answer: A

Question: 72

You want to configure OracleAS Reports Services to run reports in a Web environment. Your reports use the Single-Sign On (SSO) feature for authentication. Which components of the reports server would you choose to execute the reports? (Choose all that apply)

- A. CGI
- B. JSP
- C. rwclient
- D. Reports Servlet

Answer: B, D

Question: 73

You want only critical messages to be logged for the Oracle HTTP Server component. What would you do to achieve this?

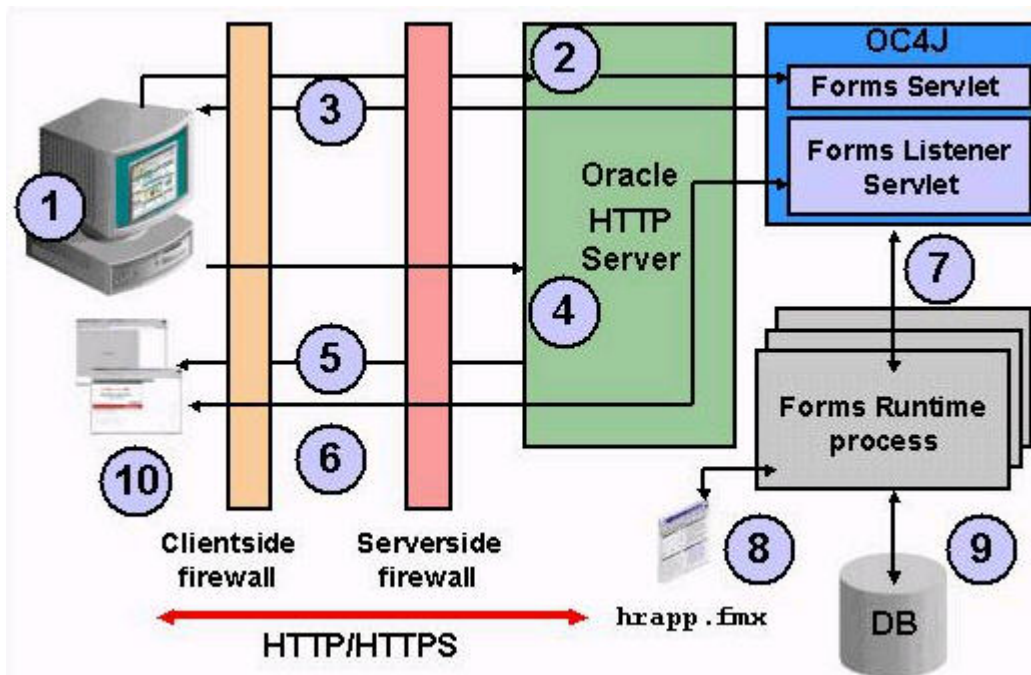
- A. Modify the log.xml file.
- B. Modify the opmn.xml file.
- C. Modify the httpd.conf file.
- D. Modify the log_loader.xml file.
- E. Modify the oracle_apache.conf file.

Answer: C

Question: 74

View the Exhibit and examine the steps 2 and 3 in the OracleAS Forms Service communication flow.

Exam Name:	Oracle Application Server 10g:Administration II		
Exam Type	Oracle		
Exam Code:	1Z0-312	Total Questions:	216



When a user accesses the forms application, the Forms Servlet creates an HTML page dynamically and the HTML page is sent to the client. The following are the steps that the Forms Servlet performs to create the HTML file:

1. It determines which configuration section to use in the formsweb.cfg file based on the config
2. parameter passed with the URL.
3. It opens the formsweb.cfg file.
4. It performs variable substitution in the base HTML file.
5. It determines which base HTML to be used.

Identify the correct order of steps that the Forms Servlet performs to create the HTML file.

- A. 2, 1, 4, 3
- B. 4, 3, 2, 1
- C. 2, 4, 3, 1
- D. 4, 2, 3, 1
- E. 1, 4, 3, 2

Answer: A

Question: 75

You are analyzing the web.xml file in an application that you have to deploy. You notice that the file has <distributable/> tag in it. What would be the reason to include this tag?

- A. because the application may require export or import
- B. because the application uses multiple JVMs or clusters
- C. because the sessions needs to be replicated in the application
- D. because the cluster-related configuration information needs to be stored in mirrored disks or RAID (redundant array of inexpensive disks)

Answer: B

Exam Name:	Oracle Application Server 10g:Administration II		
Exam Type	Oracle		
Exam Code:	1Z0-312	Total Questions:	216

Question: 76

You observed increased response time due to repeated cursor creation and repeated statement parsing. What would you do to avoid this performance overhead?

- A. Use connection pooling in the data source.
- B. Enable JDBC statement caching in the data source.
- C. Increase the value of wait-timeout for the data source.
- D. Increase the value of inactivity-timeout for the data source.

Answer: B

Question: 77

The Log Repository cannot contain access log files and trace log files because _____.

- A. they are not XML files
- B. they suit only the file-based Log Repository
- C. they contain logs for more than one component
- D. because they are verbose and do not contain diagnostic information

Answer: D

Question: 78

Which options must you consider while configuring a two-node OracleAS Cold Failover Cluster (Infrastructure) environment? (Choose all that apply.)

- A. configuring a virtual IP address that maps to both the nodes
- B. configuring a virtual host name for the primary node
- C. installing the OracleAS software on a shared storage
- D. starting the OracleAS components on both the nodes
- E. starting the OracleAS Infrastructure database on the primary node

Answer: B, C, E

Question: 79

View the Exhibits showing details about infra.edtdr5p1.us.oracle.com instance.

Exam Name:	Oracle Application Server 10g:Administration II		
Exam Type	Oracle		
Exam Code:	1Z0-312	Total Questions:	216

Instances can be grouped and managed together by configuring standalone instances in a common repository. This collection of instances is Server Farm.

Repository Type **Database**

Clusters

[Start](#) [Stop](#) [Restart](#) [Delete](#)

Select Name

☒ [Cl 1](#)

Standalone Instances

These instances belong to the farm but are not part of any cluster.

[Join Cluster](#)

Select Name	Host	Oracle Home
<input type="radio"/> bi.edtdr5p1.us.oracle.com	edtdr5p1.us.oracle.com	/home/oracle/bi
<input checked="" type="radio"/> infra.edtdr5p1.us.oracle.com	edtdr5p1.us.oracle.com	/home/oracle/infra
<input type="radio"/> j2ee1.edtdr7p1.us.oracle.com	edtdr7p1.us.oracle.com	/home/oracle/j2ee1

[Topology](#) | [Preferences](#) | [Help](#)

Copyright © 1996, 2005, Oracle. All rights reserved.

[About Oracle Enterprise Manager 10g Application Server Control](#)

ORACLE® Enterprise Manager 10g

Application Server Control

Farm > [Application Server: infra.edtdr5p1.us.oracle.com](#) >

Enable/Disable Components

Components are enabled or disabled together if they run in the same process or otherwise have a internal runtime depend in the system components table on the Application Server home page and will not be started when the application server i

Enabled Components

OC4J_SECURITY
HTTP_Server, Single Sign-On:orasso

>

Move

>>

Move All

<

Remove

<<

Remove All

Disabled Components

home

What happens when you click Join Cluster to add the infra.edtdr5p1.us.oracle.com instance to the cluster?

- A. It adds the instance to the cluster successfully.
- B. It adds the instance to the cluster, leaving the disabled component out.
- C. It returns an error because you cannot add an infrastructure instance to a cluster.
- D. It returns an error because you cannot add an instance to the cluster when its components are disabled.

Answer: D

Question: 80

Exam Name:	Oracle Application Server 10g:Administration II		
Exam Type	Oracle		
Exam Code:	1Z0-312	Total Questions:	216

Which two statements describe the features of an OC4J island? (Choose two.)

- A. State replication is not possible within an OC4J island.
- B. OC4J processes in an OC4J instance can be partitioned into islands.
- C. An OC4J island can have the OC4J processes from multiple application server instances.
- D. An OC4J island can have the OC4J processes from a single application server instance only.

Answer: B, C

Question: 81

You want to pass a nondefault location for the Oracle inventory file on Linux using Oracle Universal Installer parameters while cloning a middle-tier installation. What would you do to achieve this?

- A. Modify the clone.pl script.
- B. Modify the cs.properties file.
- C. Modify the emd.properties file.
- D. Modify the prepare_clone.pl script.

Answer: B

Question: 82

Which two statements are true regarding the Virtual IP address in an OracleAS Cold Failover Cluster (Infrastructure) environment? (Choose two.)

- A. It is always associated with the active node in the cluster.
- B. It is always associated with the passive node in the cluster.
- C. It is used to synchronize the nodes that are participating in the cluster.
- D. It is used by the OracleAS clients to connect to OracleAS Infrastructure.
- E. It is used by the cluster interconnect to transfer data from one node to the other node.

Answer: A, D

Question: 83

You have two machines ASHOST1 and ASHOST2 containing Oracle Application Server installations. ASHOST1 has the OracleAS Infrastructure installation and ASHOST2 has the Business Intelligence installation connected to OracleAS Infrastructure in ASHOST1. You plan to clone the Business Intelligence installation to a new host ASHOST3. Which statement regarding the cloning in this scenario is true?

- A. The cloning will fail because OracleAS Infrastructure is not available in ASHOST2.
- B. The cloning will fail because OracleAS Infrastructure is not available in ASHOST3.
- C. The cloning will be successful, but the cloned instance will not be functional until OracleAS Infrastructure is created on ASHOST3.
- D. The cloning will be successful and the cloned instance will use OracleAS Infrastructure that is available on ASHOST1.

Answer: D

Question: 84

Which two options must you consider while installing an OracleAS Cold Failover Cluster (Middle-Tier) in a two-node environment? (Choose two.)

- A. using identical OracleAS Instance names on both nodes
- B. using different ports for OracleAS components on each node

Exam Name:	Oracle Application Server 10g:Administration II		
Exam Type	Oracle		
Exam Code:	1Z0-312	Total Questions:	216

- C. using identical command shell and kernel parameters on both nodes
- D. installing OracleAS Infrastructure in the shared storage on the cluster
- E. using identical Oracle home paths on the local storage on both nodes

Answer: C, E

Question: 85

You are using a DCM-managed OracleAS cluster and have installed an OracleAS Cold Failover Middle-Tier cluster environment. After installing, you have reconfigured the OracleAS components to use the virtual host name instead of the physical host name. And then, you execute the following commands:

```
$ $ORACLE_HOME/dcm/bin/dcmctl updateConfig -ct -i ohs
$ $ORACLE_HOME/dcm/bin/dcmctl updateConfig -ct -i oc4j
```

Why would you execute these commands after changing the node to use the virtual host name? (Choose all that apply.)

- A. to propagate the changes from the Distributed Configuration Management (DCM) repository to the active node
- B. to update the DCM repository with the changes that are made in the cluster node
- C. to synchronize the information about OracleAS components from all nodes with the DCM repository
- D. to register the OracleAS component, OC4J, and to upload the OC4J module to the DCM repository

Answer: B

Question: 86

You want to make more than one application server instance available for the users simultaneously to counter any instance failure situation. You also want the configuration changes made to one instance to be propagated to other instances automatically. What would you do to achieve this?

- A. Implement Oracle Application Server Farm.
- B. Implement an island on Oracle Application Server instances.
- C. Implement OracleAS Cluster taking all the instances as part of the cluster.
- D. Implement OracleAS Cold Failover Cluster adding all the instances as part of the cluster.

Answer: C

Question: 87

You have a DCM-Managed OracleAS Cluster, CLAPP, which contains three Oracle Application Server instances in it. You manually made, using vi editor, a couple of changes in the configuration file that belongs to one of these instances. What would be the effect of this on the other instances?

- A. The changes cannot be distributed until you restart the cluster.
- B. The changes are automatically reflected in other instances also.
- C. A dcmctl command should be used to distribute the changes in other instances.
- D. A opmnctl command should be used to distribute the changes in other instances.

Answer: C

Question: 88

Exam Name:	Oracle Application Server 10g:Administration II		
Exam Type	Oracle		
Exam Code:	1Z0-312	Total Questions:	216

Observe the following command that is executed to bulk load objects from a database into a Discoverer business area:

```
java -jar eulbuilder.jar -connect jchan/12345@my_database -load "Test BA" -source "Designer 6i
```

```
-
bobsworkarea" -eul eul51 -user bob -capitalize -remove_prefix -replace_blanks -lov CHAR,
INTEGER,
DECIMAL -aggregate AVG -log load.log -description "Test BA"
```

What is the result of this command? (Choose all that apply.)

- A. It creates a new business area, Test BA, for user BOB.
- B. It creates a new business area, Test BA, for user JCHAN.
- C. It bulk loads objects into an end user layer (EUL) named eul51 from an Oracle Designer source.
- D. It loads all the objects from Test BA into user BOB as Designer 6i - bobsworkarea.

Answer: A, C

Question: 89

While observing the module metrics for Oracle HTTP Server in the peak hour of working, you found that a high number of static page requests are being processed by the http_core.c module. What could you do to reduce the number of requests for the http_core.c module?

- A. enable OracleAS Web Cache
- B. add virtual host to Oracle HTTP Server
- C. set the MaxKeepAliveRequests directive to zero
- D. reduce the number of OC4J instances running simultaneously

Answer: A

Question: 90

You want to create a user, BOB, and want this user to be the authorized user for Discoverer BI catalog. Which two steps would you perform to accomplish the task? (Choose two.)

- A. User BOB must be assigned the D4OPUB role.
- B. User BOB must be assigned the SELECT_CATALOG role.
- C. User BOB must be assigned OLAPDBA and OLAPSYS roles.
- D. User BOB must be created on the database on which the catalog is installed.

Answer: A, D

Question: 91

View the Exhibit to examine the contents of the log.xml file.

Exam Name:	Oracle Application Server 10g:Administration II		
Exam Type	Oracle		
Exam Code:	1Z0-312	Total Questions:	216

```
<MESSAGE>
<HEADER>
  <TSTZ_ORIGINATING>2006-11-29T01:27:12.766-05:00</TSTZ_ORIGINATING>
  <ORG_ID>Oracle</ORG_ID>
  <COMPONENT_ID>LOGLOADER</COMPONENT_ID>
  <MSG_TYPE TYPE="NOTIFICATION"></MSG_TYPE>
  <MSG_LEVEL>1</MSG_LEVEL>
  <HOST_ID>EDTDR5P1</HOST_ID>
  <HOST_NWADDR>10.156.24.215</HOST_NWADDR>
  <MODULE_ID>LogLoader</MODULE_ID>
  <THREAD_ID>LogLoaderRunner</THREAD_ID>
  <USER_ID>oracle</USER_ID>
</HEADER>
<PAYLOAD>
  <MSG_TEXT>No file matches: opmn/logs/wireless-notificationeventcollector_server-%OPMN_PROCESS_SET%~1.</MSG_TEXT>
</PAYLOAD>
</MESSAGE>
<MESSAGE>
<HEADER>
  <TSTZ_ORIGINATING>2006-11-29T04:12:46.690-05:00</TSTZ_ORIGINATING>
  <ORG_ID>Oracle</ORG_ID>
  <COMPONENT_ID>LOGLOADER</COMPONENT_ID>
  <MSG_TYPE TYPE="ERROR"></MSG_TYPE>
  <MSG_LEVEL>1</MSG_LEVEL>
  <HOST_ID>EDTDR5P1</HOST_ID>
  <HOST_NWADDR>10.156.24.215</HOST_NWADDR>
  <MODULE_ID>LogLoader</MODULE_ID>
  <THREAD_ID>LogLoaderRunner</THREAD_ID>
  <USER_ID>oracle</USER_ID>
</HEADER>
<PAYLOAD>
  <MSG_TEXT>Cannot parse registration file /home/oracle/bi/diagnostics/config/registration/OHS_logs.xml. Caught pa
tion: oracle.xml.parser.v2.XMLParseException: Invalid element 'logss' in content of 'logs', expected elements '[log
4, column 8".</MSG_TEXT>
</PAYLOAD>
```

What inference would you draw from the output?

- A. The error prevents the Log Loader from running.
- B. The Log Loader can read the log files but cannot write into the Log Repository.
- C. The error may prevent the contents of certain log files from being loaded to the Log Repository.
- D. The Log Loader would run and the parsing of the registration file would continue from the next line.

Answer: C

Question: 92

In a distributed OracleAS Cold Failover cluster (Infrastructure), which OracleAS components are started on a different node of the cluster? (Choose all that apply.)

- A. OracleAS Control Console
- B. OracleAS HTTP Server (OHS)
- C. OracleAS Single Sign-On (SSO)
- D. Delegated Administration Services
- E. OPMN daemon and OPMN-managed processes

Answer: C, D

Question: 93

Examine the following excerpt from the verify_policy.xml policy file:

```
<policy>
<instanceList successRequirement="Mandatory">
<instance>infra</instance>
</instanceList >
<instanceList successRequirement="Optional">
```

Exam Name:	Oracle Application Server 10g:Administration II		
Exam Type	Oracle		
Exam Code:	1Z0-312	Total Questions:	216

```

<instance>portal_1</instance>
<instance>portal_2</instance>
</instanceList >
<instanceList successRequirement="Ignore">
<instance>portal_3</instance>
</instanceList >
<instanceList successRequirement="Group" minSucceed="2">
<instance>BI_1</instance>
<instance>BI_2</instance>
<instance>BI_3</instance>
</instanceList >
</policy>

```

What do you infer from this excerpt?

- A. The standby site is configured with symmetric topology.
- B. The standby site is configured with asymmetric topology.
- C. The file would be used when a user executes the discover topology command.
- D. The file is wrongly configured because the successRequirement parameter has a wrong value.

Answer: B

Question: 94

Why would you set the prestartRuntimes parameter to true in formsweb.cfg file?

- A. to allow the application to run in debug mode
- B. to provide URL security to avoid misuse of URL parameters
- C. to minimize the time lost in starting new processes by enabling run-time pooling
- D. to restart the OC4J instance automatically each time the application is accessed

Answer: C

Question: 95

You successfully changed the IP address of the host that runs the OracleAS Infrastructure. Your attempt to change the IP address of the host that runs a middle-tier instance using the chgiphost.sh script failed with an error. You notice the following error in the error.log file:
ADMN-202026

A problem has occurred accessing the OracleAS 10g infrastructure database.

On further investigation, you find that the script is trying to connect to the OracleAS Infrastructure using the old IP address because the new IP address of the OracleAS Infrastructure is not updated in the middle-tier instance.

What would you do to configure the middle-tier with the same IP address?

- A. Restart all the middle-tier instances and run the script again.
- B. Modify the ias.properties file that belongs to the middle-tier instance and run the script again.
- C. Modify the portlist.ini file that belongs to the middle-tier instance and run the script again.
- D. Change the location of the portlist.ini file that belongs to the middle-tier instance and run the script again.

Answer: B

Question: 96

In your OracleAS Cold Failover Cluster (Infrastructure) environment, you realized that the primary node has failed because of a hardware failure. Which step is performed first while failing over to the secondary node?

Exam Name:	Oracle Application Server 10g:Administration II		
Exam Type	Oracle		
Exam Code:	1Z0-312	Total Questions:	216

- A. The shared storage device is remounted by the secondary node.
- B. The OracleAS Infrastructure database is restarted on the secondary node.
- C. The virtual IP address and the virtual host name are reassociated with the secondary node.
- D. The ORACLE_HOME environmental variable is reset to a new home directory on the secondary node.

Answer: C

Question: 97

You want to use the OracleAS Metadata Repository Diagnostics log file of the Portal component with the Application Server Control Log Viewer. Which is the configuration that is required before performing this operation?

- A. changing the content of the logcfg.sql file
- B. registering the log file by editing the log.xml file
- C. changing the content of the logloader.xml file
- D. changing the contents of iasconfig.xml available in \$ORACLE_HOME/portal/conf
- E. registering the log file by editing the value of PATH and INSTANCE in the PORTAL.xml file

Answer: E

Question: 98

You exported the Discoverer Catalog to d40_export.XML. You want to migrate to a new system by importing the d40_export.XML file. When attempting to import the D4OSYS schema of Discoverer Catalog, the following error occurs:

Error - oracle.dss.d4o.administration.D4OExportException-D4O-1122 Error while attempting to import.

What is the solution?

- A. Ensure that the tablespace you are importing the Discoverer Catalog into has the same size as that of the exported Discoverer Catalog.
- B. Ensure that the access privilege to the D4OSYS schema objects is the same in the target Discoverer Catalog as that of the exported Discoverer Catalog.
- C. Ensure that the tablespace on which you are importing on, has the minimum block size of 8,192 bytes.
- D. Ensure that the D4OSYS schema has the correct default tablespace and that the default tablespace has unlimited quota.

Answer: D

Question: 99

You are using a two-node cluster in your OracleAS Cold Failover Cluster (Infrastructure) environment. The environmental details are listed below:

Virtual host name : my-vhost1.us.oracle.com

Virtual IP : 10.156.20.200

Node 1 (Primary Node)

Physical IP: 10.156.20.201

Node 2 (Secondary Node)

Physical IP: 10.156.20.202

Which statement is true regarding the normal functioning of this environment?

- A. The OracleAS components run on both the nodes.
- B. The virtual host name and the virtual IP address are enabled on the primary node.
- C. The virtual host name and the virtual IP address are enabled on the secondary node.
- D. The client connections and requests are load balanced between both the nodes.

Exam Name:	Oracle Application Server 10g:Administration II		
Exam Type	Oracle		
Exam Code:	1Z0-312	Total Questions:	216

Answer: B

Question: 100

You want to configure an OracleAS Web Cache cluster environment as follows:

1. The cluster supports the propagation of configuration and invalidation requests across all cache cluster members.
2. The cluster members do not request their peer cluster members for contents while processing the requests.

Which option would you set while configuring the Web Cache cluster?

- A. an invalidation coordinator
- B. the Failover threshold to zero
- C. the capacity of each member to zero
- D. the session binding to an origin server

Answer: C

Question: 101

You want to invalidate one object in the Web Cache and do not want the cache traversal to be performed for this purpose. What would you do to achieve this?

- A. Send a basic invalidation request.
- B. Manually create an invalidation index.
- C. Use SUBSTRING for invalidation request.
- D. Use QUERYSTRING_PARAMETER with the invalidation index.

Answer: A

Question: 102

View the Exhibit and observe the JVM heap setting.

Exam Name:	Oracle Application Server 10g:Administration II		
Exam Type	Oracle		
Exam Code:	1Z0-312	Total Questions:	216

Ports

TIP Be sure that the port ranges specified below are large enough to accommodate the total number of pr

RMI Ports 12401-12500

JMS Ports 12601-12700

AJP Ports 12501-12600

RMI-IIOP Ports

IIOP Ports

IIOP SSL (Server only)

IIOP SSL (Server and Client)

Command Line Options

Java Executable

OC4J Options -properties -userThreads

Java Options -Xms512m -Xmx512m -server -Djava.security.policy=/home/oracle/bi

Environment Variables

Remove

Select Name	Value	Append
<input checked="" type="radio"/> DISPLAY	localhost:0	<input type="checkbox"/>
<input type="radio"/> LD_LIBRARY_PATH	/home/oracle/bi/lib:/home/oracle/bi/li	<input type="checkbox"/>

Add Environment Variable

Which statement describes the situation in which you should prefer this setting?

- A. The applications require larger C code stack size.
- B. The applications load classes that require permanent generation size.
- C. The applications consistently require a larger amount of heap memory.
- D. The JVM heap size set in the OC4J instance is not used by all OC4J JVM processes within that OC4J instance.

Answer: C

Question: 103

Which two statements are true regarding the Forms Listener Servlet? (Choose two.)

- A. It always runs on the database tier.
- B. It manages the creation of a Forms Runtime process for each client.
- C. It is responsible for querying the database server for the requested data.
- D. It is used only when the HTTP listener is not configured or fails to operate.
- E. It serves only one client and is terminated when the client session is terminated.
- F. It manages the network communications that occur between the client and its associated Forms Runtime process, through the Web server.

Answer: B, F

Question: 104

Exam Name:	Oracle Application Server 10g:Administration II		
Exam Type	Oracle		
Exam Code:	1Z0-312	Total Questions:	216

Note the following points about an Oracle Application Server deployment:

1. The Oracle HTTP Server, Single Sign-On, and Delegated Administration Services are implemented in two servers in the DMZ and accessed through HTTP load balancer.
2. Oracle Internet Directory and Directory Integration and Provisioning components are implemented in two servers in the Data tier along with the OracleAS Metadata Repository.
3. OracleAS Metadata Repository is implemented in a RAC-enabled database.

Which deployment topology is described here?

- A. Security infrastructure topology
- B. J2EE enterprise deployment topology
- C. Portal enterprise deployment topology
- D. Business Intelligence and Forms topology

Answer: A

Question: 105

Which statements are true about JDBC statement caching in OracleAS? (Choose all that apply.)

- A. The JDBC statement cache is maintained in the middle tier.
- B. The data source can be configured to use JDBC statement caching.
- C. Developers cannot enable and disable JDBC statement caching programmatically.
- D. A JDBC statement cache is associated with a particular physical connection maintained by a data source.

Answer: A, B, D

Question: 106

You used the following URL in your browser to open a form:

<http://techprd.oracle.com:7778/forms/frmservlet?config=hrapp&form=techdet>

Which component of OracleAS Forms Services creates an HTML response that will be sent to the client?

- A. Forms Servlet
- B. Java client applet
- C. Forms Listener Servlet
- D. Forms Runtime process

Answer: A

Question: 107

Which two statements regarding the chgiphost command are true? (Choose two.)

- A. It can be executed to run in silent mode.
- B. It can be used to change the IP address of the middle-tier installation.
- C. It cannot be used to change the host name of the middle-tier installation.
- D. It cannot be used to change the IP address of the Infrastructure installation.
- E. It cannot be used to change the host name or IP address of the middle-tier installation that is part of an OracleAS File-based Farm.

Answer: A, B

Question: 108

Why are Enterprise Deployment architectures secure?

Exam Name:	Oracle Application Server 10g:Administration II		
Exam Type	Oracle		
Exam Code:	1Z0-312	Total Questions:	216

- A. because Oracle Internet Directory is not isolated in the data-tier DMZ
- B. because direct communication from the load balancing router to the data-tier DMZ is allowed
- C. because communication from external clients does not go beyond the load balancing router level or webcache
- D. because communication between components across DMZs is not restricted by port and protocol

Answer: C

Question: 109

Exhibit:

```
[oracle@ASTECH1P1 bin]$ ./opmnctl status

Processes in Instance: bi.astech1p1.us.oracle.com
-----+-----+-----+-----+
ias-component      | process-type      | pid  | status
-----+-----+-----+-----+
reptest6           | ReportsServer     | 3092 | Down
reptest5           | ReportsServer     | 2412 | Down
reptest4           | ReportsServer     | 4224 | Down
reptest3           | ReportsServer     | 4176 | Down
reptest2           | ReportsServer     | 3876 | Down
reptest1           | ReportsServer     | 3144 | Down
reptest            | ReportsServer     | 2968 | Down
OC4J               | OC4J_BI_Forms     | 4144 | Alive
OC4J               | home              | 2096 | Alive
WebCache           | WebCacheAdmin     | 4124 | Alive
WebCache           | WebCache          | 2432 | Alive
HTTP_Server        | HTTP_Server       | 548  | Alive
dcm-daemon         | dcm-daemon        | N/A  | Alive
LogLoader          | logloaderd        | N/A  | Alive
```

You executed opmnctl startall command to start all the processes in a middle-tier installation. You checked the status using opmnctl command and find that the reports servers are still down. You checked the status of these components in Application Server Control and noticed that status is same there also.

You are able to start reports servers individually using opmnctl startproc ias-component=reptest command. Which two settings may cause opmnctl command to fail to start all the reports servers together? (Choose two.)

- A. setting of start timeout in opmn.xml file
- B. setting of JRERuntime in ias.properties file
- C. setting of callbackTimeOut in reports server configuration files
- D. setting of elapsedTimeLimit in reportsConfig.properties file

Answer: A, C

Question: 110

Exhibit:

Exam Name:	Oracle Application Server 10g:Administration II		
Exam Type	Oracle		
Exam Code:	1Z0-312	Total Questions:	216

Exhibit:

```
[oracle@EDTDR5P1 bin]$ ./opmnctl status
```

Processes in Instance: bi.edtdr5p1.us.oracle.com

ias-component	process-type	pid	status
DSA	DSA	N/A	Down
LogLoader	logloaderd	14233	Alive
dcm-daemon	dcm-daemon	14232	Alive
OC4J	home	14391	Alive
OC4J	OC4J_BI_Forms	14392	Alive
OC4J	OC4J_Portal	14393	Alive
WebCache	WebCache	14240	Alive
WebCache	WebCacheAdmin	14225	Alive
HTTP_Server	HTTP_Server	14226	Alive
Discoverer	ServicesStatus	14227	Alive
Discoverer	PreferenceServer	14229	Alive
wireless	performance_server	14485	Alive
wireless	messaging_server	14486	Alive
wireless	OC4J_Wireless	16423	Alive

System Components	
<input type="button" value="Start"/> <input type="button" value="Stop"/> <input type="button" value="Restart"/> <input type="button" value="Delete OC4J Instance"/>	
Select All Select None	
Select Name	Status
<input type="checkbox"/> Discoverer	↑
<input checked="" type="checkbox"/> Forms	↑
<input type="checkbox"/> home	↑
<input type="checkbox"/> HTTP_Server	↑
<input type="checkbox"/> OC4J_BI_Forms	↑
<input type="checkbox"/> OC4J_Portal	↑
<input type="checkbox"/> OC4J_Wireless	↑
<input checked="" type="checkbox"/> Portal:portal	↑
<input type="checkbox"/> Reports Server: rep_edtdr5p1_bi	↓
<input type="checkbox"/> Web Cache	↑
<input type="checkbox"/> Wireless	↑
<input checked="" type="checkbox"/> Management	↑
<input type="button" value="Start"/> <input type="button" value="Stop"/> <input type="button" value="Restart"/> <input type="button" value="Delete OC4J Instance"/>	

Why is the report server rep_edtdr5p1_bi not listed in the Oracle Process Manager and Notification Server (OPMN) but available in Oracle Application Server Control?

Exam Name:	Oracle Application Server 10g:Administration II		
Exam Type	Oracle		
Exam Code:	1Z0-312	Total Questions:	216

- A. because OPMN does not support report servers
- B. because the server_name.conf file is missing
- C. because report server is not registered in opmn.xml
- D. because the OC4J_BI_FORMS component is not restarted as it contains in-server process

Answer: C

Question: 114

Which is the last step that you would perform while stopping the OracleAS Cold Failover Cluster Infrastructure?

- A. Stop the OracleAS Control.
- B. Disable the virtual IP addresses.
- C. Shut down the infrastructure databases.
- D. Stop the OPMN daemon and OPMN-managed processes.

Answer: B

Question: 115

You are working on the report server, rep_tech1p1_bi. You have created a JSP report to publish data in the ORDERS table on the Web. You plan to use the URL engine and an event-based API to e-mail the report. Which file would you update to achieve this?

- A. rwbuilder.conf
- B. bridgeconf.dtd
- C. rep_tech1p1_bi.conf
- D. repbrg_bridgename.conf

Answer: C

Question: 116

Note the following points about an OracleAS Cluster:

1. The cluster consists of multiple J2EE and Web Cache middle-tier instances.
2. All the J2EE and Web Cache instances in the cluster have identical configuration and applications deployed in them.
3. All the instances are connected to the OracleAS Metadata Repository.

You plan to expand this cluster by cloning a J2EE and Web Cache middle-tier instance in it. Identify the steps required to achieve this objective and the correct sequence of performing them.

- a. Prepare the source instance for cloning.
- b. Remove the source instance from the OracleAS Cluster.
- c. Add the cloned instance to the farm and the OracleAS Cluster.
- d. Add the source instance to the farm and the OracleAS Cluster.
- e. Perform the cloning process to create a new instance.

- A. 2, 1, 5, 4, 3
- B. 1, 2, 4, 5, 3
- C. 1, 5; steps 2, 3, 4 are not required
- D. 1, 5, 3; steps 2, 4 are not required

Answer: A

Question: 117

Exam Name:	Oracle Application Server 10g:Administration II		
Exam Type	Oracle		
Exam Code:	1Z0-312	Total Questions:	216

You want to provide a second metadata repository for your Business Intelligence and Forms middle-tier installation. Which tool or utility would you use to create a new database containing a metadata repository?

- A. Oracle AS Upgrade Assistant
- B. Oracle Universal Installer (OUI)
- C. Database Configuration Assistant (DBCA)
- D. Metadata Repository Upgrade Assistant (MRUA)
- E. OracleAS Metadata Repository Creation Assistant

Answer: B

Question: 118

You observed from the View Logs page that an Oracle Application Server OC4J component OC4J_Portal is generating log files in simple text instead of in the Oracle Diagnostic Logging (ODL) format. What could be the reason for this?

- A. The Log Loader is not configured properly.
- B. The odl tags are commented in the server.xml file.
- C. The odl tags are commented in the rmi.xml and jms.xml files.
- D. The NOTIFICATION and OraLogMode directives are set incorrectly in the httpd.conf file.

Answer: C

Question: 119

You are using a file-based repository for the OracleAS Cluster. Which statement is true regarding the participating instances?

- A. The instances must be in the same node.
- B. The instances should belong to different platforms.
- C. The instances should be associated with OracleAS Metadata Repository.
- D. The instances should not belong to the same OracleAS Farm as the cluster.
- E. The instances should not be associated an OracleAS Farm which uses Database-based Repository.

Answer: E

Question: 120

You want to export the Discoverer Catalog because you want to migrate to the new version of Oracle BI Discoverer. Which three statements are true regarding the export file created? (Choose three.)

- A. It can be created in .dmp format.
- B. It has the entire Discoverer Catalog.
- C. It contains information about folder organization.
- D. It contains object definitions, privileges, and properties.
- E. It has the definition of all the users that have access to the OLAP schemas and metadata.

Answer: B, C, D

Question: 121

In your OracleAS Cold Failover Cluster (Infrastructure) environment, you realized that the primary node has failed because of a hardware failure. Which two steps are performed while failing over to the secondary node? (Choose two.)

Exam Name:	Oracle Application Server 10g:Administration II		
Exam Type	Oracle		
Exam Code:	1Z0-312	Total Questions:	216

- A. The clusterware remounts the shared storage device.
- B. The client sessions are reconnected using a new virtual IP address.
- C. The OracleAS components are restarted in the secondary node.
- D. The current client connections are reset to use the secondary node host name.

Answer: A, C

Question: 122

You deployed a Human Resource application on a middle-tier instance. The application uses some external files that are not stored in the Oracle home for employee details. You plan to clone the middle-tier instance to a new host. What would happen when you attempt to clone the instance?

- A. The application is not cloned when you clone a middle-tier instance.
- B. The application will be cloned and will work successfully on the new host.
- C. The cloning fails because you cannot clone a middle-tier instance in such a situation.
- D. The application will be cloned but will not work because the external files that it refers to will not be copied to the new host.

Answer: D

Question: 123

You recently created an OracleAS Cluster, cltech, which has middle-tier instances myint.edtech1.oracle.com and j2ee.edtech1.oracle.com. You notice that the status of the myint.edtech1.oracle.com instance is down because a couple of enabled components in this instance are down. You are managing the OracleAS Cluster and instances using the Application Server Control.

What effect would restarting of the cluster have on the components and the status of the myint.edtech1.oracle.com instance?

- A. All the disabled and enabled components would be restarted and the status of the instance would be down.
- B. All the disabled and enabled components would be restarted and the status of the instance would be up.
- C. Only enabled components that are currently running would be restarted and the status of the instance would be down.
- D. Only enabled components that are currently running would be restarted and the status of the instance would be up.

Answer: C

Question: 124

You have three Web Cache nodes, NODE1, NODE2, and NODE3, in your OracleAS Cluster (Web Cache) environment. The capacity of the cache members are 20, 10, and 10 respectively. From a client, NODE2 receives a request for a content that is stored in and owned by NODE3. NODE2 sends a request to NODE3 to get the content but does not receive a response after a specified threshold.

Below are the steps that NODE2 could perform while returning the requested content to the client:

1. Detect NODE3 to have failed.
2. Reassign ownership of content.
3. Recalculate the relative capacity of the remaining cache cluster members.
4. Send a request to the application Web server and store the content in its cache after receiving it.

Exam Name:	Oracle Application Server 10g:Administration II		
Exam Type	Oracle		
Exam Code:	1Z0-312	Total Questions:	216

5. Receive the content from application Web server and store it in the NODE1 cache because NODE1 has the highest capacity.
6. Return the requested content to the client.
7. Send a request along with the client request to NODE1 to return the content to the client.

Which option illustrates the correct steps and order that NODE2 would use?

- A. 3, 2, 4, and 6
- B. 3, 4, 5, and 6
- C. 2, 3, 4, 5, and 7
- D. 1, 3, 2, 4, and 6
- E. 1, 2, 3, 4, 6, and 7

Answer: D

Question: 125

You have set the SERVER_IN_PROCESS parameter to "yes" in the rwservlet.properties file. What is the reason for doing so?

- A. to specify whether to use default Reports Server or not
- B. to run the Reports Server in the same process as the Reports Servlet
- C. to run the Reports Server and Reports Servlet as different processes
- D. to enable the Reports Server to spawn a Reports Engine whenever required

Answer: B

Question: 126

You want to enable applications to share state across OC4J processes. Which three configuration files would you modify to achieve this? (Choose three.)

- A. web.xml
- B. httpd.conf
- C. portlist.ini
- D. orion-web.xml
- E. orion-ejb-jar.xml

Answer: A, D, E

Question: 127

What could be the reason for executing the prepare_clone.pl PERL script on the source machine during the cloning process? (Choose all that apply.)

- A. to archive and compress the Oracle home
- B. to take a snapshot of information required for cloning
- C. to parse the files in the Oracle home to extract and store required values
- D. to copy and extract the compressed Oracle home from the source to the destination
- E. to prepare a snapshot of information only when cloning to a destination having a different operating system

Answer: B, C

Question: 128

You have deployed an SSL-enabled OracleAS Portal application in an OracleAS Cold Failover Cluster (Middle-Tier) environment that has two nodes.

Exam Name:	Oracle Application Server 10g:Administration II		
Exam Type	Oracle		
Exam Code:	1Z0-312	Total Questions:	216

You want:

1. The Portal application to use OracleAS Web Clipping Portlet that internally uses OracleAS HTTP Server (OHS) to maintain the state
2. Better cache-hit ratio for the OracleAS Portal cache

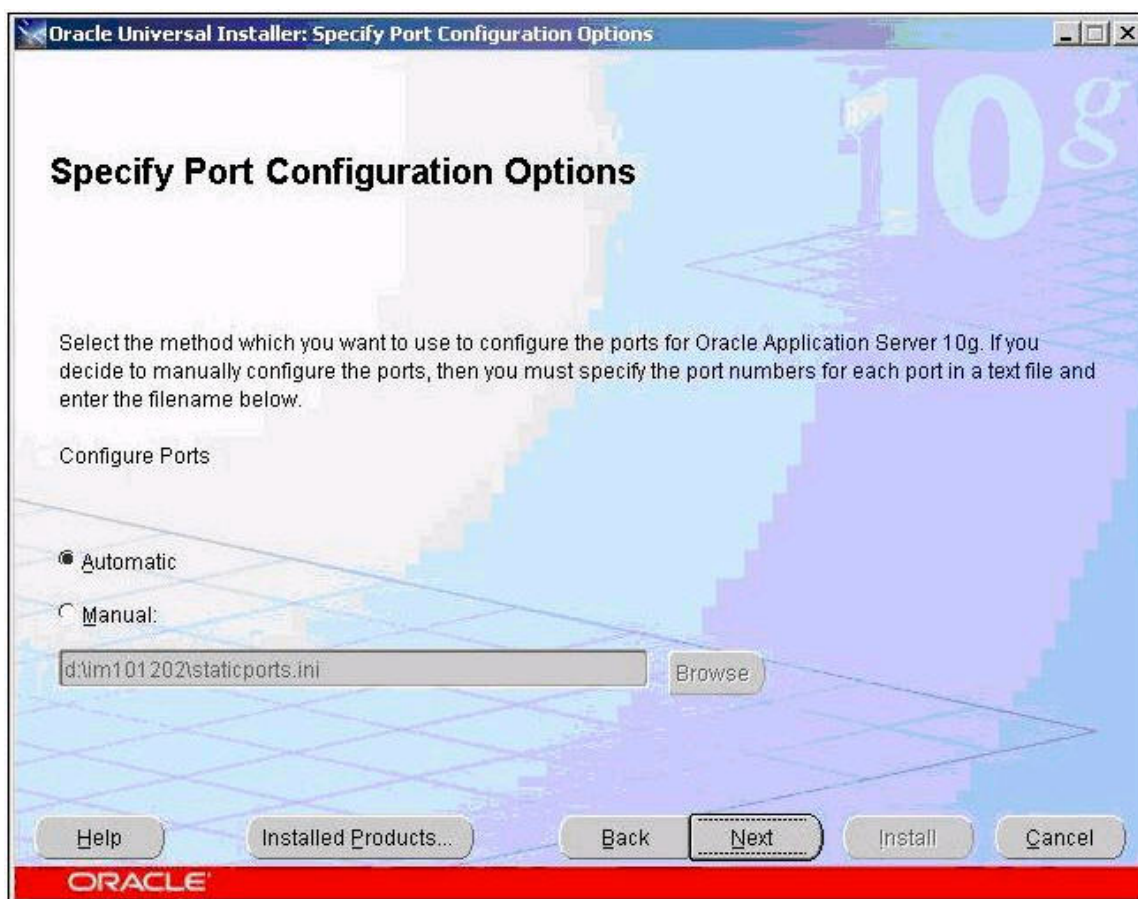
Which option would you consider in your OracleAS cluster environment to achieve these objectives?

- A. redeploying the Portal application without SSL
- B. enabling session binding for the user sessions
- C. using the physical host while accessing the application
- D. enabling the caching of contents in OracleAS Web Cache

Answer: B

Question: 129

Exhibit:



You have an OracleAS Infrastructure (9.0.4) instance running on a host. You plan to install OracleAS Infrastructure (10.1.2) on the same host using custom ports. You invoked Oracle Universal Installer (OUI) to install the infrastructure. The installer does NOT display the "Specify Port Configuration Options" window (shown in the Exhibit) to provide custom ports. What would you do in this situation to install the infrastructure with custom ports?

Exam Name:	Oracle Application Server 10g:Administration II		
Exam Type	Oracle		
Exam Code:	1Z0-312	Total Questions:	216

- A. Run the root.sh script and then invoke the installer again.
- B. Remove OracleAS Infrastructure (9.0.4) and invoke the installer again.
- C. Create a new inventory using -invPtrLoc and invoke the installer again.
- D. Modify the permissions to be able to update the staticports.ini file and then update the file.

Answer: C

Question: 130

You have installed an OracleAS Cold Failover cluster (Middle-Tier) that has two nodes, NODE1 and NODE2, in the cluster where NODE1 is primary and NODE2 secondary. After installing, you have:

1. Changed the port numbers of OracleAS HTTP Server (OHS) and OracleAS Portal on NODE1
2. Failed over to NODE2 and made it the primary node and NODE1 as the secondary node
3. Enabled SSL connections for the OID users
4. Enabled HTTPS connections for the application users

Now you want to execute the following command to update the component configuration in the Oracle Internet Directory (OID):

```
$ $ORACLE_HOME/bin/chgtocfmt -v asterix.us.oracle.com -p jnuy45ty -s -e -w
vhost101.us.oracle.com
```

Which option would you consider before running the command?

- A. failing over from the NODE2 to NODE1
- B. propagating the changes from NODE2 to NODE1
- C. disabling the SSL connection for the OID users and enabling access to OID
- D. manually updating the portlist.ini file to include the correct port numbers in NODE1
- E. manually updating the portlist.ini file to include the correct port numbers in NODE2

Answer: D

Question: 131

Observe the following command:

```
java -jar eulbuilder.jar -connect jchan/12345@my_database -import c:\data\sales.eex -log
sales_import_logfile.txt -log_only
```

What will be the implication of this command? (Choose all that apply.)

- A. The command imports EUL objects into the current EUL from a specified Discoverer EUL export file.
- B. The command produces an error because the -import command is not supported with the -log_only command modifier.
- C. The command imports EUL objects into the current EUL from a specified Discoverer EUL export file and produces a log file.
- D. The command produces a log file showing whether problems occurred during command execution without performing import.

Answer: D

Question: 132

Which statement is true regarding the removal of an instance from OracleAS Cluster?

- A. The instance can be removed only after the cluster is stopped.
- B. The instance should not be the only member available in the cluster.
- C. The instance must be shut down before removing it from the cluster.
- D. The instance must be functional while removing it from the cluster.

Exam Name:	Oracle Application Server 10g:Administration II		
Exam Type	Oracle		
Exam Code:	1Z0-312	Total Questions:	216

E. The instance would be shut down if it is up while removing. It needs to be manually restarted after the removal.

Answer: E

Question: 133

Which two components are installed when you select Oracle Application Server Metadata Repository only?during infrastructure installation?

- A. Oracle Internet Directory
- B. Oracle Database 10g Enterprise Edition
- C. Oracle Application Server Single Sign-On
- D. Oracle Enterprise Manager 10g Database Control
- E. Oracle Enterprise Manager 10g Application Server Control

Answer: B, D

Question: 134

Because of which two causes would you set up a file system on a shared disk while installing OracleAS Cold Failover Cluster? (Choose two.)

- A. for mounting from all the cluster nodes
- B. for setting the OracleAS cluster file system
- C. for setting the Oracle inventory of Oracle products
- D. for setting the Oracle home directory for the OracleAS instance
- E. for creating a volume on the file system that will be used by the OracleAS instance

Answer: C, D

Question: 135

You are using XML requests and database triggers to invalidate a single object in your OracleAS Web Cache cluster environment. While observing the Web cache performance, you realized that the OracleAS Web Cache is taking a long time to invalidate the requested content. Which option could you use to optimize the invalidation process?

- A. a value for the BASICSELECTOR element
- B. timeout mechanism for the invalidation process
- C. an invalidation index for the query-string invalidations
- D. a name attribute for the ADVANCEDSELECTOR element
- E. an invalidation coordinator to traverse the cluster members

Answer: A

Question: 136

The ODL has been enabled for OC4J in your Oracle Application Server instance. View the Exhibit to observe the changes made to the value in the Java Option text box.

Exam Name:	Oracle Application Server 10g:Administration II		
Exam Type	Oracle		
Exam Code:	1Z0-312	Total Questions:	216

Ports

☒ **TIP** Be sure that the port ranges specified below are large enough to accommodate the total number of processes in the Clusters(OC4J) table.

RMI Ports

JMS Ports

AJP Ports

RMI-IIOP Ports

IIOP Ports

IIOP SSL (Server only)

IIOP SSL (Server and Client)

Command Line Options

Java Executable

OC4J Options

Java Options

Related Links [Tracing Properties](#)

Environment Variables

Select Name	Value	Append
<input checked="" type="radio"/> DISPLAY	localhost:0	<input type="checkbox"/>
<input type="radio"/> LD_LIBRARY_PATH	/home/oracle/bi/lib:/home/oracle/bi/li	<input type="checkbox"/>

What is the effect of the setting in the Exhibit?

- A. The applications in the entire OC4J instance produce log messages with ECID.
- B. The applications in the entire OC4J instance use the ECID generated from within OC4J instead of receiving the ECID from Oracle HTTP Server.
- C. The applications in the entire OC4J instance produce log messages with ECID only if Oracle HTTP Server is ODL enabled.
- D. The applications in the entire OC4J instance do not produce log messages after ODL is disabled for OC4J.

Answer: A

Question: 137

You modified the web.xml configuration file of an application to include the <load-on-startup> subelement under the <servlet> element as follows:

```
<servlet>
<servlet-name>viewsrc</servlet-name>
<servlet-class>ViewSrc</servlet-class>
<load-on-startup> </load-on-startup>
</servlet>
```

Which two statements describe the effect of this modification? (Choose two.)

- A. The startup time for OC4J process increases.
- B. The startup time for OC4J process decreases.
- C. The first request latency for ViewSrc servlet decreases.
- D. The first request latency for ViewSrc servlets increases.

Answer: A, C

Question: 138

You are using the QUERYSTRING_PARAMETER in an invalidation request that takes additional processing time for OracleAS Web Cache to match and invalidate the objects. What can you do to optimize the invalidation process?

Exam Name:	Oracle Application Server 10g:Administration II		
Exam Type	Oracle		
Exam Code:	1Z0-312	Total Questions:	216

- A. Increase the maximum cache size for OracleAS Web Cache.
- B. Reduce the number of caching rules for OracleAS Web Cache.
- C. Compress documents as they are cached in OracleAS Web Cache.
- D. Add an INVALIDATIONINDEX element in the webcache.xml file and restart OracleAS Web Cache.

Answer: D

Question: 139

You executed the following command from a middle-tier host:
[oracle@EDTDR5P1 bin]\$ addNewServerTarget.sh rep_edtdr5p1_bi
Oracle Home : /home/oracle/bi
What is the reason for executing this command?

- A. to add a new middle-tier instance to a farm
- B. to register rep_edtdr5p1_bi in opmn.xml and targets.xml file
- C. to add a new Report Engine to the Reports Server rep_edtdr5p1_bi
- D. to create the rep_edtdr5p1_bi.conf file when it is not available

Answer: B

Question: 140

In a deployment environment, you modified the global-web-application.xml file to change the value of the main_mode parameter to justrun. Which statement describes the purpose of the change?

- A. The dispatcher reloads any classes that have been modified since loading.
- B. The dispatcher translates and reloads the classes if the time stamp is different.
- C. There is no time-stamp checking and no recompilation of JSPs or reloading of Java classes.
- D. The reloading of Java classes and recompilation of JSPs are performed irrespective of time-stamp checking.

Answer: C

Question: 141

You executed the following command on the machine where one of your Business Intelligence and Forms instance is available:
dcmctl joinCluster CL_1
What would be the result of this command?

- A. The instance would be added to the cluster.
- B. The command fails with an error because of the components that are not clusterable.
- C. The command successfully adds only the components that are clusterable to the cluster.
- D. The command fails because it has to be executed only on the machine where OracleAS Infrastructure is installed.

Answer: B

Question: 142

You are hired as an OracleAS administrator in an organization. While studying the OracleAS environment, you realized that OracleAS Web cache is configured to use the Internal Tracking mechanism of session binding. What could be the cause for this mechanism to be used?

- A. to use the Oracle default mechanism

Exam Name:	Oracle Application Server 10g:Administration II		
Exam Type	Oracle		
Exam Code:	1Z0-312	Total Questions:	216

- B. to upgrade from prior releases of OracleAS
- C. to optimize the performance of OracleAS Web cache
- D. to reduce the load on the application Web server

Answer: B

Question: 143

Identify a feature of OracleAS Identity Management active-active configuration.

- A. A single load balancer is configured to handle client requests.
- B. The OIM components are installed on the local storage of each node.
- C. Clients requests are always handled by the HTTP virtual host name.
- D. A single virtual host name is configured for the OracleAS components.

Answer: B

Question: 144

You have four nodes NODE1, NODE2, NODE3, and NODE4, wherein you want to install and configure a multimaster replication group with fan-out feature with the following requirements:

1. NODE1 and NODE2 must be synchronized so that changes made on either node are replicated to the other but the naming context cn=private users, cn=mycompany is to be excluded from this replication.
2. The naming context ou=Americas,cn=mycompany on NODE3 is to be partially synchronized from NODE2 so that only changes made under ou=Americas, cn=mycompany on NODE2 are replicated to NODE3. The following are to be excluded from this replication:
 - Changes made under cn=customer profile, ou=Americas, cn=mycompany
 - Changes in the attribute userpassword
3. NODE4 is to be configured as a full replica of NODE2, that is, changes to all naming contexts in NODE2 will be replicated (one-way) to NODE4.

Which three options would you consider to meet this requirements? (Choose three.)

- A. setting up a partial replica for NODE2 to NODE4
- B. setting up a partial replica for NODE1 and NODE2
- C. setting up a partial replica for NODE2 and NODE3
- D. setting up a full LDAP replication for NODE2 and NODE3
- E. setting up a full LDAP replication from NODE2 to NODE4
- F. setting up a multimaster replication group for NODE1 and NODE2

Answer: C, E, F

Question: 145

View the Exhibit that shows a tag added to the fixup_script.xml.tmpl file.

Exam Name:	Oracle Application Server 10g:Administration II		
Exam Type	Oracle		
Exam Code:	1Z0-312	Total Questions:	216

```

<cfw:operation>
  <alter cluster="false"
    alter_file_name="%NEW_HOME%/sysman/emd/targets.xml"
    reference_file_name="%NEW_HOME%/install/portlist.ini">
    <cfw:alterCommand>
      <cfw:pattern>(Oracle HTTP Server port) ([
        ] *) (=) ([
          ] *) ([0-9] *)
      </cfw:pattern>
      <cfw:value_ref>5</cfw:value_ref>
      <cfw:subst>(Property NAME=&quot;HTTPPort&quot;
        VALUE=&quot;)([0-9] *) (&quot;)</cfw:subst>
      <cfw:subst_ref>2</cfw:subst_ref>
    </cfw:alterCommand>
  </alter>
</cfw:operation>

```

What could be the reason for adding this tag during the cloning process?

- A. to relocate the targets.xml and portlist.ini files in the cloned home
- B. to change all occurrences of Oracle home in the targets.xml file of the cloned home
- C. to replace the old port number in the targets.xml file with a new port number in the cloned home
- D. to replace the old port number in the portlist.ini file with the new HTTP port number from the targets.xml file in the cloned home

Answer: C

Question: 146

While starting up the OracleAS Cold Failover Cluster, you performed the following steps:

1. Enabled the virtual IP
2. Enabled volume management
3. Set the ORACLE_SID environmental variable.
4. Started the OracleAS Infrastructure database

Which is the next step that you would perform to complete the startup process?

- A. Configure a virtual host on the active node.
- B. Start the OPMN and OPMN-managed processes.
- C. Set the ORACLE_BASE environmental variable on the active node.
- D. Set the VIRTUAL_HOST_NAME environmental variable on the passive node.

Answer: B

Question: 147

Exhibit:

Exam Name:	Oracle Application Server 10g:Administration II		
Exam Type	Oracle		
Exam Code:	1Z0-312	Total Questions:	216



You always use the URL `http://edtdr5p1.us.oracle.com:7778/forms/frmservlet?form=dep_emp` to access the `dep_emp` form. But now the URL displays the message shown in the Exhibit. What could be the reason for this?

- A. The Forms instance is down.
- B. The `formsweb.cfg` file is missing.
- C. The `OC4J_BI_FORMS` component is down.
- D. The value of `allowNewConnections` parameter has been changed.
- E. The Distributed Configuration Management (DCM) processes are not restarted after the changes in `formsweb.cfg` file.

Answer: D

Question: 148

You want to clone the middle tier of the production site to the standby site by using the `asgctl.sh` command-line tool. What are the prerequisites for accomplishing this task? (Choose all that apply.)

- A. The standby site must be configured with symmetric topology.
- B. The OracleAS Guard standalone kit must be installed on the standby system.
- C. Java Development Kit with its `jar` utility must be installed on the standby system.
- D. The `initiate` operation on the standby system must be performed before starting the cloning operation.
- E. The Backup and Restore feature must be installed in the OracleAS Guard home on the standby system.

Answer: B, C, E

Question: 149

Which option provides the correct match according to the functionalities in a Distributed Configuration Management (DCM)-Managed OracleAS cluster?

- I) OPMN a) Load balancing

Exam Name:	Oracle Application Server 10g:Administration II		
Exam Type	Oracle		
Exam Code:	1Z0-312	Total Questions:	216

II) DCM b) Distributed deployment
 III) mod_oc4j c) Fault tolerance

- A. I-c, II-b, III-a
- B. I-a, II-b, III-c
- C. I-b, II-a, III-c
- D. I-c, II-c, III-a

Answer: A

Question: 150

In your OracleAS Cold Failover Cluster (Middle-Tier) environment, you realized that the active node has failed because of a hardware failure. You have failed over the virtual IP address from the failed node to the new active node and now you are in the process of failing over the failed OracleAS components. Which two actions would you perform on the new active node while performing this task? (Choose two.)

- A. Restart all OracleAS components.
- B. Update the DCM repository with the changes.
- C. Update the OracleAS Infrastructure with the changes.
- D. Restart the OPMN daemon and the Oracle HTTP Server (OHS).
- E. Stop all OracleAS components and start the OPMN daemon only.
- F. Reset the ORACLE_HOME environmental variable to the local path.

Answer: B, E

Question: 151

Identify the situation when you would need to use the deconfig tool.

- A. to remove an infrastructure installation
- B. to modify the configuration of an OC4J container
- C. to remove unwanted Oracle homes from the operating system (OS) file system
- D. to remove entries of an OracleAS instance from OracleAS Metadata Repository and Oracle Internet Directory

Answer: D

Question: 152

You generated the TechRep.ear file that contains the report files (RDF's). You want to run the TechRep.rdf report on the Web using rwservlet. You deployed the TechRep.ear to OC4J_BI_Forms instance and run the report on the Web as follows:

<http://edtech1.us.oracle.com:7778/TechRep/rwservlet?report=TechRep.rdf&destype=cache&desformat=html&u chdb>

You received the following errors:

REP-110: Unable to open file .
 REP-1070: Error while opening or saving a document.
 REP-0110: Unable to open file

Which solution would you adopt in this situation?

- A. Set the REPORTS_DEFAULT_DISPLAY parameter to YES.
- B. Add library path="ORACLE_HOME/jlib/zrclient.jar"/ entry in orion-application.xml.
- C. Add library path="\$ORACLE_HOME/reports/jlib/rwrun.jar"/ entry in orion-application.xml.
- D. Specify the directory in which the reports are saved along with the full path in REPORTS_PATH.

Exam Name:	Oracle Application Server 10g:Administration II		
Exam Type	Oracle		
Exam Code:	1Z0-312	Total Questions:	216

Answer: D

Question: 153

To achieve high availability, you implemented OracleAS Cold Failover Cluster. Which statement is true regarding this?

- A. It involves two participating nodes, where both remain actively in use.
- B. It involves two participating nodes, where one remains actively in use and the other remains inactive.
- C. It does not manage virtual host names to present Oracle Application Server middle-tier a single system view of the hardware cluster.
- D. It involves two participating nodes, where one remains actively in use and the other remains inactive and they cannot share the storage space.

Answer: B

Question: 154

Which statement correctly describes a demilitarized zone (DMZ)?

- A. It is the computer system(s) between the outer and inner firewalls.
- B. It is the machine in which the database containing the metadata repository is installed.
- C. It is a protocol that uses the Secure Sockets Layer (SSL) to encrypt and decrypt user page requests.
- D. It is a computing system that is ready to pick up application processing in the event that the primary computing system fails.

Answer: A

Question: 155

You have implemented the OracleAS Disaster Recovery solution through the standby site. Your production site has an unplanned outage because the system on which OracleAS Metadata Repository Infrastructure was installed has crashed and it cannot be recovered soon.

To perform a failover operation, you executed the following steps:

1. Connect to the OracleAS Guard server on the standby site.
2. Specify that the primary OracleAS Metadata Repository database is on the standby site.
3. Perform an instantiate operation.
4. Perform an asgctl failover operation.
5. Discover the topology.

Which is the correct sequence of these steps?

- A. 1,2,3,4,5
- B. 1,4,3,2,5
- C. 1,5,4,3,2
- D. 1,2,3,5; 4 is not required.
- E. 1,2,3,4; 5 is not required.
- F. 1,2 and 4; 5 and 3 is not required.

Answer: F

Question: 156

You have configured a single OracleAS Identity Management (OID) component for your OracleAS environment. Because of an organizational need, you want to transform this configuration to a distributed OracleAS Identity Management cluster. Which options would you

Exam Name:	Oracle Application Server 10g:Administration II		
Exam Type	Oracle		
Exam Code:	1Z0-312	Total Questions:	216

consider while configuring the OID cluster after setting up the basic cluster requirements?
(Choose all that apply.)

- A. installing OracleAS Single Sign-On (SSO) on the new node
- B. installing all OID components on the new node in the cluster
- C. installing OracleAS Delegated Administration Services (DAS) on the new node
- D. using Oracle Database Advanced Replication to replicate the database contents
- E. using Oracle Database Automatic Storage Management (ASM) to manage the database instances

Answer: A, C

Question: 157

You have three Web Cache nodes, NODE1, NODE2, and NODE3 in your OracleAS Cluster (Web Cache) environment. The capacity of the cache members are 20, 10 and 10 respectively. From a client, NODE2 receives a request for a content that is stored in and owned by NODE3.

Below are the steps that NODE2 could perform while returning the requested content to the client:

1. Send a request to NODE3 to get the requested contents.
2. Receive the content from NODE3 and store it in its cache as on-demand content.
3. Send a request along with the client request to NODE3 to return the content to the client.
4. Receive the content from NODE3 and store it in NODE1 cache because NODE1 has the highest capacity.
5. Send a request along with the client request to NODE1 to return the content to the client.
6. Return the requested content to the client.

Which option illustrates the correct steps and order that NODE2 would use?

- A. 1, 4 and 5
- B. 1, 2, and 6
- C. 1, 2, and 5
- D. 1, 2, 4 and 5

Answer: B

Question: 158

What is the reason for installing the DBMS_IAS_UPGRADE package during upgrade of the metadata repository ?

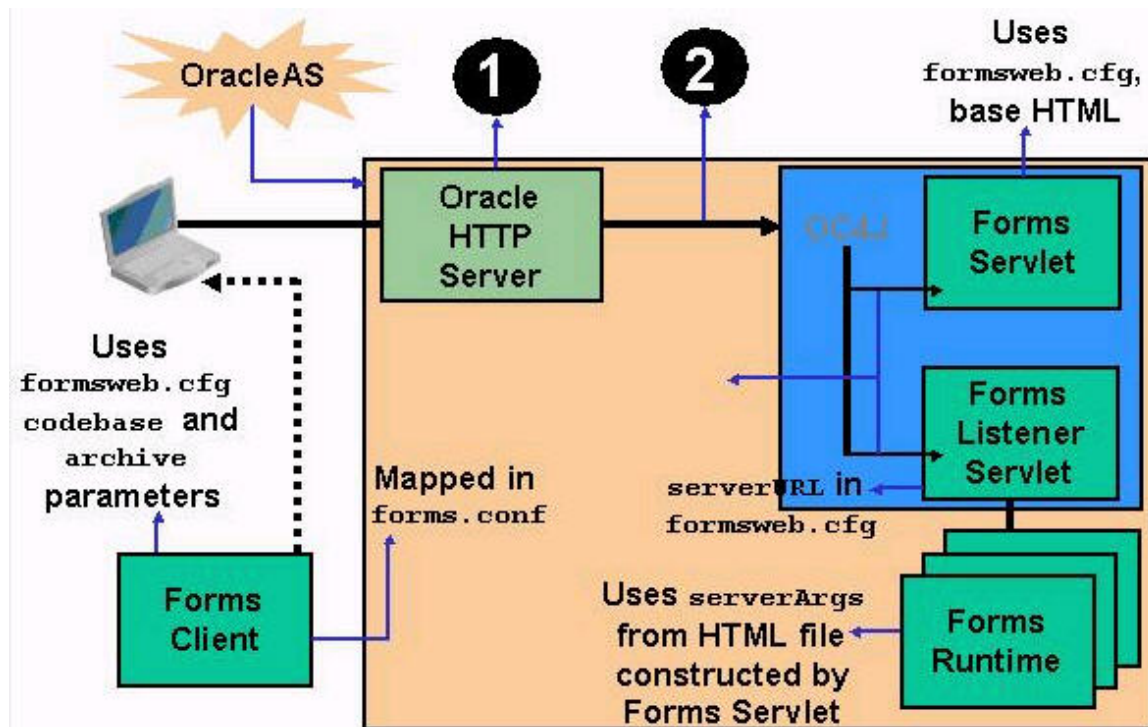
- A. to make sure that there are no invalid objects in the database
- B. to create new tablespaces and schemas in the metadata repository
- C. to identify the component schemas that have not yet been upgraded
- D. to allow schema upgrade scripts to grant permissions when they are run as the SYS user

Answer: D

Question: 159

Exhibit:

Exam Name:	Oracle Application Server 10g:Administration II		
Exam Type	Oracle		
Exam Code:	1Z0-312	Total Questions:	216



Following are the descriptions for the steps marked as 1 and 2 in the Exhibit:

1. Oracle HTTP listener forwards the request to OC4J.

2. OC4J maps the request to the Forms Servlet.

Which configuration files are used in each of these steps?

- A. forms.conf and web.xml
- B. Both the steps use base HTML files.
- C. default.env and formsweb.cfg
- D. Both the steps use the formsweb.cfg file.

Answer: A

Question: 160

Which two components are required for an OracleAS cluster (Identity Management) in an active-active configuration to redirect client requests? (Choose two.)

- A. Network router
- B. HTTP load balancer
- C. LDAP load balancer
- D. OracleAS Web Cache load balancer

Answer: B, C

Question: 161

Which statement is true regarding the OracleAS Infrastructure installation?

- A. Identity Management components can be installed across multiple computers.
- B. OracleAS Metadata Repository and Identity Management components cannot use a single database.

Exam Name:	Oracle Application Server 10g:Administration II		
Exam Type	Oracle		
Exam Code:	1Z0-312	Total Questions:	216

- C. OracleAS Metadata Repository and Identity Management components cannot be installed across multiple computers.
- D. Only one OracleAS Metadata Repository can be installed in an Oracle Application Server topology.

Answer: A

Question: 162

Which two statements correctly describe the features of an LDAP-based replication? (Choose two.)

- A. The LDAP-based replica must have at least two suppliers.
- B. The supplier of an LDAP-based replica can be a stand-alone master node.
- C. The LDAP-based replica can be a consumer for another LDAP-based replica.
- D. The consumer replica's metadata is manually migrated to the supplier replica.

Answer: B, C

Question: 163

You executed the following command:

```
[oracle@EDTDR5P1 bin]$ printlogs -f -odl
```

Which two statements describe the activities performed by this command? (Choose two.)

- A. The command continues to produce the log file contents as they get added to the log file.
- B. The command produces the filtered log file contents that are in Oracle Diagnostic Logging (ODL) format only.
- C. The command produces the log file contents generated for the last 10 minutes only in XML format.
- D. The command uses the registration files in the diagnostics/config/registration directory available in Oracle home (where printlogs resides) to determine the path for log files.

Answer: A, D

Question: 164

Why would you set the capacity of a cluster member to zero in an OracleAS cluster (Web Cache)?

- A. to allow the OracleAS Web Cache cluster to use the default capacity of the member
- B. to allow the OracleAS Web Cache cluster to change the capacity of the member dynamically
- C. to configure the member as the Web cache load balancer for the OracleAS Web Cache cluster
- D. to configure the member as an individual cache that does not request objects from its peer cluster members
- E. to configure the member to be able to propagate only the invalidation requests to other cluster members

Answer: D

Question: 165

You are upgrading the OracleAS Infrastructure from 9.0.2 to 10.1.2.0.2. You noticed the following information in the output of the Metadata Repository Upgrade Assistant (MRUA):

```
checkAndClean : failed to get oca config from db
```

```
java.sql.SQLException: ORA-00942: table or view does not exist
```

```
at oracle.jdbc.driver.DatabaseError.throwSQLException(DatabaseError.java:124)
```

```
at oracle.jdbc.driver.T4CTTloer.processError(T4CTTloer.java:304)
```

```
at oracle.jdbc.driver.T4CTTloer.processError(T4CTTloer.java:271)
```


Exam Name:	Oracle Application Server 10g:Administration II		
Exam Type	Oracle		
Exam Code:	1Z0-312	Total Questions:	216

at oracle.jdbc.driver.T4C8Oall.receive(T4C8Oall.java:625)
at oracle.jdbc.driver.T4CStatement.doOall8(T4CStatement.java:112)
What could be the reason for this?

- A. There are active middle-tier instances currently using OCA.
- B. The infrastructure should be upgraded to 9.0.4 and then to 10.1.2.0.2.
- C. The database that is used by the infrastructure is not available and is, therefore, shut down.
- D. The Oracle Application Server Certificate Authority (OCA) is not installed in the infrastructure.

Answer: D

Question: 166

In your OracleAS Cold Failover Cluster (Middle-Tier) environment, you realized that the active node has failed because of a hardware failure and you are in the process of failing over the virtual IP address from the failed node to the new active node. In which condition would you fail over the shared disk along with the virtual IP address?

- A. if a load balancer is not configured
- B. if OracleAS JMS is using file persistent
- C. if the Oracle home is set in the shared storage
- D. if OracleAS Infrastructure is installed on the shared storage

Answer: B

Question: 167

View the Exhibit and examine the Forms Trace configuration in the formsweb.cfg file.

<input checked="" type="radio"/>	record	forms	Sub argument for otherparams
<input type="radio"/>	tracegroup		Sub argument for otherparams
			Sub argument for otherparams

What is the implication of this configuration?

- A. All the events are logged.
- B. Only error messages are logged.
- C. Tracing will be enabled but nothing will be written to the log file.
- D. Tracing remains disabled until the tracegroup parameter is set.

Answer: B

Question: 168

Which three statements are true regarding Discoverer Catalog?(Choose three.)

- A. Its objects are only accessible to D4OSYS user.
- B. It can be created only on a tablespace with minimum block size of 8192 bytes.

Exam Name:	Oracle Application Server 10g:Administration II		
Exam Type	Oracle		
Exam Code:	1Z0-312	Total Questions:	216

- C. It is a repository for storing data contained in workbooks, worksheets and other objects that are created with Discoverer Plus OLAP.
- D. Its objects are owned by D4OSYS user and they can be shared with other users who have access.
- E. It is a repository for storing only the definitions of workbooks, worksheets and other objects that are created with Discoverer Plus OLAP.

Answer: B, D, E

Question: 169

Which statement is true about adding an Oracle Application Server instance to an OracleAS Cluster that uses the database repository?

- A. The instance should not belong to the same farm as the OracleAS Cluster.
- B. The instance can belong to a different platform than that of the existing instances in the cluster.
- C. The instance should belong to a farm that is associated with an OracleAS Metadata Repository.
- D. The subsequent instances added after the first instance cannot use the base configuration specified for the first instance.

Answer: C

Question: 170

You exported the Discoverer Catalog as d40_export.XML. You want to migrate to a new system by importing the d40_export.XML file. Which statements are true? (Choose all that apply.)

- A. All the object definitions as well as user definitions will be imported.
- B. All users having access privileges to the exported objects would be created while importing from the .XML file.
- C. All the existing objects with the same name will be overwritten and new objects will be added.
- D. The users in the target database where Discoverer Catalog is imported must have the same access privileges to the exported objects as in the exported Discoverer Catalog.

Answer: C, D

Question: 171

You want to obtain detailed information about the performance of individual servlets and JSPs in a J2EE application that is deployed in Oracle Application Server. What would you use for this?

- A. JVM metric table in Application Server Control
- B. EJB Modules table in Application Server Control
- C. Web Modules table in Application Server Control
- D. Virtual host metrics in Application Server Control

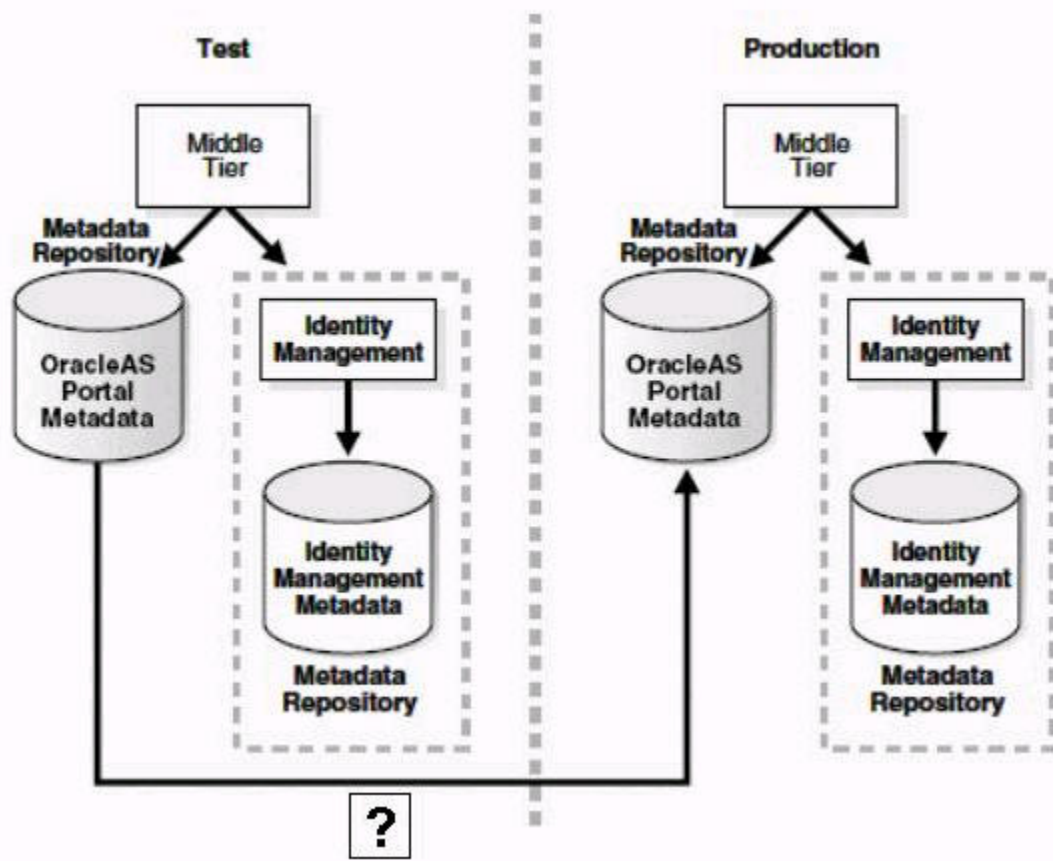
Answer: C

Question: 172

You are in the process of moving an OracleAS Portal metadata from the test to the production environment.

View the Exhibit and examine the step indicated by the "?" mark.

Exam Name:	Oracle Application Server 10g:Administration II		
Exam Type	Oracle		
Exam Code:	1Z0-312	Total Questions:	216



Which utility or command would you use to perform this step?

- A. the Export/Import utility
- B. the opmnctl command
- C. the dcmctl command with the updateconfig option
- D. the user-managed backup and recovery commands

Answer: A

Question: 173

You have a J2EE application that you want to deploy on a DCM-Managed OracleAS Cluster. You plan to use the dcmctl utility to deploy the application. Which statement regarding the location of the application that you plan to deploy is true?

- A. The application should reside on the machine where the metadata repository is installed.
- B. The application should reside on all the machines where the participating instances are running.
- C. The application can reside on any of the machines where the participating instances are running.
- D. The application should reside on the machine from where you plan to execute the dcmctl command.

Answer: D

Exam Name:	Oracle Application Server 10g:Administration II		
Exam Type	Oracle		
Exam Code:	1Z0-312	Total Questions:	216

Question: 174

You have an Oracle Internet Directory instance running on a host. You created a new database in which you want to install metadata repository and register it with the existing Oracle Internet Directory. You used the Metadata Repository Creation Assistant (MRCA) to achieve this task. But the MRCA fails to register the metadata repository with the Oracle Internet Directory. On investigation, you find the following error in the MRCA log file:

```
java.lang.Exception: oracle.net.config.ServiceAliasException
DEBUG - Exception while Registering the database
java.lang.Exception: java.lang.Exception: oracle.net.config.ServiceAliasException
at oracle.ias.repca.directory.DirectoryService.registerDB(DirectoryService.java:222)
at oracle.ias.repca.actions.InfrastructureRegistrationAction.perform(InfrastructureRegistration
Action.java:286)
at oracle.ias.repca.ifs.utils.action.ActionQueue.performActions(ActionQueue.java:319)
at oracle.ias.repca.ifs.utils.action.ActionQueue.run(ActionQueue.java:245)
at java.lang.Thread.run(Thread.java:534)
What would you do to accomplish the task successfully?
```

- A. Set ORACLE_SID and run the MRCA again.
- B. Set ORACLE_HOME and run the MRCA again.
- C. Start a listener for the new database and run the MRCA again.
- D. Modify the entries in the sqlnet.ora file and run the MRCA again.
- E. Run the MRCA again from the directory mentioned in the TNS_ADMIN variable.

Answer: D

Question: 175

You have three Web Cache nodes, NODE1, NODE2, and NODE3, in your OracleAS Cluster (Web Cache) environment. The capacity of the cache members are 20, 10, and 10 respectively. From a client, NODE2 receives a request for a content that is owned by NODE3 but not stored in NODE3.

Below are the steps that are performed while returning the requested content to the client:

1. NODE2 sends a request to NODE3 to get the requested contents.
2. NODE2 receives the content from NODE3 and stores it in its cache as on-demand content.
3. NODE3 sends the request to the application Web server and stores the content in its cache after receiving it.
4. NODE2 receives the content from NODE3 and stores it in the NODE1 cache because NODE1 has the highest capacity.
5. NODE2 sends a request along with the client request to NODE1 to return the content to the client.
6. NODE2 returns the requested content to the client.

Which option illustrates the correct steps and order that NODE2 would use?

- A. 1, 3, and 6
- B. 1, 2, and 3
- C. 1, 3, 2, and 6
- D. 1, 4, 2, and 6

Answer: C

Question: 176

You performed the following steps:

1. Create a directory oracle under \$ORACLE_HOME/Apache/Apache/logs.
2. Modify httpd.conf to add the following two lines:
OraLogMode oracle
Ora LogSeverity NOTIFICATION

Exam Name:	Oracle Application Server 10g:Administration II		
Exam Type	Oracle		
Exam Code:	1Z0-312	Total Questions:	216

3. Restart Oracle HTTP Server.

What is the purpose of the above configuration?

- A. to update the Log Loader configuration
- B. to enable ECID with Oracle HTTP Server
- C. to enable ODL messages with Oracle HTTP Server
- D. to limit the number of processes and connections to Oracle HTTP Server

Answer: C

Question: 177

Given below is the metrics about a Java Server Page (JSP):

session.Activation.active: 500 ops

session.Activation.completed:0 ops

- A. The application creates sessions, but never uses them.
- B. The default session creation has been turned off for the JSP in the application.
- C. The application has JSP that is not automatically recompiled, in case of changes.
- D. The application is well-tuned because the sessions are being used and invalidated.

Answer: A

Question: 178

Exhibit:

ORACLE Enterprise Manager 10g
Application Server Control

Farm > Application Server: bi.edtdr5p1.us.oracle.com > OC4J: OC4J_BI_Forms >

Replication Properties

Web Applications

☒ **TIP** Setting session state replication here will enable session state replication for all web applications true for all web modules.

☒ Replicate session state

Multicast Host (IP)

Multicast Port

EJB Applications

What happens when this setting is applied?

- A. All the virtual machines will be restarted.
- B. A cluster tag would be added to the rmi.xml file.
- C. The load-on-startup property would be set to false for all the Web modules.
- D. The <distributed/> tag will be set automatically in all the web.xml files.
- E. Session state replication for all the Web applications across an island is enabled.

Answer: E

Exam Name:	Oracle Application Server 10g:Administration II		
Exam Type	Oracle		
Exam Code:	1Z0-312	Total Questions:	216

Question: 179

In your OracleAS Cold Failover Cluster (Infrastructure) environment, you realized that the primary node has failed because of a hardware failure. Therefore, you failed over to the secondary node. Which three options would you consider to confirm that the failover is successful?(Choose three.)

- A. accessing OracleAS Control Console through the virtual host
- B. accessing the OracleAS Infrastructure database through the virtual host
- C. accessing the Oracle Internet Directory (OID) components through the virtual host
- D. accessing Oracle HTTP Server Welcome page using the default port through the virtual host
- E. accessing Oracle HTTP Server Welcome page using the secured port through the virtual host

Answer: A, D, E

Question: 180

Which three statements correctly describe the feature of an OracleAS Cluster (Web Cache) and its members? (Choose three.)

- A. The Web cache members communicate for invalidation and detection of new members within the Web cache cluster.
- B. The cluster owns the cache contents and requests for the contents from the cluster members when the contents are requested.
- C. The cluster uses the absolute capacity of each cache instance to distribute the cached content among the cache cluster members.
- D. The Web cache cluster transfers the ownership of the cached content to another available member in an event of a member failure.
- E. The cluster may store the popular objects, known as on-demand content, in the cache of more than one cluster member causing fewer requests being sent to the application Web server.

Answer: A, D, E

Question: 181

In your middle-tier installation, the in-process server is started automatically when the report is requested for the first time. You want to disable the autostart feature of the in-server process. How would you do it?

- A. Set start timeout in the opmn.xml file.
- B. Restart the OC4J_BI_FORMS process.
- C. Stop or disable the process in the operating system (OS).
- D. Run the SRW.RUN_REPORT built-in procedure by passing appropriate values to it.
- E. Set the SERVER_IN_PROCESS property to NO in the rwservlet.properties file.

Answer: E

Question: 182

View the Exhibit and examine the content of a log file at ORACLE_HOME/Apache/Apache/logs/oracle.

Exam Name:	Oracle Application Server 10g:Administration II		
Exam Type	Oracle		
Exam Code:	1Z0-312	Total Questions:	216

```

<MESSAGE>
  <HEADER>
    <TSTZ_ORIGINATING>2002-04-01T18:38:48.058-08:00</TSTZ_ORIGINATING>
    <ORG_ID>oracle.com</ORG_ID>
    <COMPONENT_ID>OHS</COMPONENT_ID>
    <HOSTING_CLIENT_ID>0.0.255.255</HOSTING_CLIENT_ID>
    <MSG_TYPE TYPE="ERROR"></MSG_TYPE>
    <MSG_LEVEL>17</MSG_LEVEL>
    <HOST_ID>test-perf9</HOST_ID>
    <HOST_NWADDR>0.0.255.255</HOST_NWADDR>
    <MODULE_ID>apache_core</MODULE_ID>
    <PROCESS_ID>5713</PROCESS_ID>
  </HEADER>
  <CORRELATION_DATA>
    <EXEC_CONTEXT_ID>
      <UNIQUE_ID>1017715128:255...255.255.88:5713:0:1</UNIQUE_ID>
      <SEQ>1</SEQ>
    </EXEC_CONTEXT_ID>
  </CORRELATION_DATA>
  <PAYLOAD>
    <MSG_TEXT>File does not exist:
    /files/Apache/docs/images/java-apache-project.gif
    </MSG_TEXT>
  </PAYLOAD>
</MESSAGE>

```

Which two statements describe the conclusion from the Exhibit? (Choose two.)

- A. Oracle Diagnostic Logging (ODL) has been disabled for Oracle HTTP Server.
- B. The content assists in correlating messages across components.
- C. ODL has been enabled for Oracle HTTP Server.
- D. The component-logging level has been set to its default value for Oracle HTTP Server.

Answer: B, C

Question: 183

Your OracleAS Identity Management cluster environment has the following features:

1. You are using the Oracle Real Application Clusters (RAC) to ensure high availability of OracleAS Metadata Repository. There are two instances of the database that are running on two different nodes in RAC.
2. The complete OracleAS environment, including the RAC, was restarted on Sunday night after a regular maintenance work. OID users in your OracleAS environment complain about the slow response on Monday morning.

While investigating the reason, you realized that the all client requests are being served by only one of the RAC nodes but both the RAC nodes are active.

Which option would you implement to use both the RAC nodes?

- A. interconnect between the RAC nodes to propagate the client requests
- B. Transparent Application Failover (TAF) to distribute the user requests among the nodes
- C. Load balancer in the RAC environment to distribute the user requests among the nodes

Exam Name:	Oracle Application Server 10g:Administration II		
Exam Type	Oracle		
Exam Code:	1Z0-312	Total Questions:	216

D. External load balancer in the OracleAS Identity Management cluster environment to distribute the user requests among the nodes

Answer: C

Question: 184

You want to configure OracleAS High Availability environment by installing OracleAS Cold Failover Cluster (Infrastructure). Which option must you consider before the installation?

- A. setting up a file system that can be mounted from all nodes in the Cluster
- B. distributing and installing OracleAS components on different Oracle homes
- C. mapping the virtual host name and the virtual IP address on all nodes in the Cluster
- D. installing Oracle home on the local storage of each node in the OracleAS Cold Failover Cluster

Answer: A

Question: 185

Which two statements describe the functioning of Oracle Process Management and Notification (OPMN)? (Choose two.)

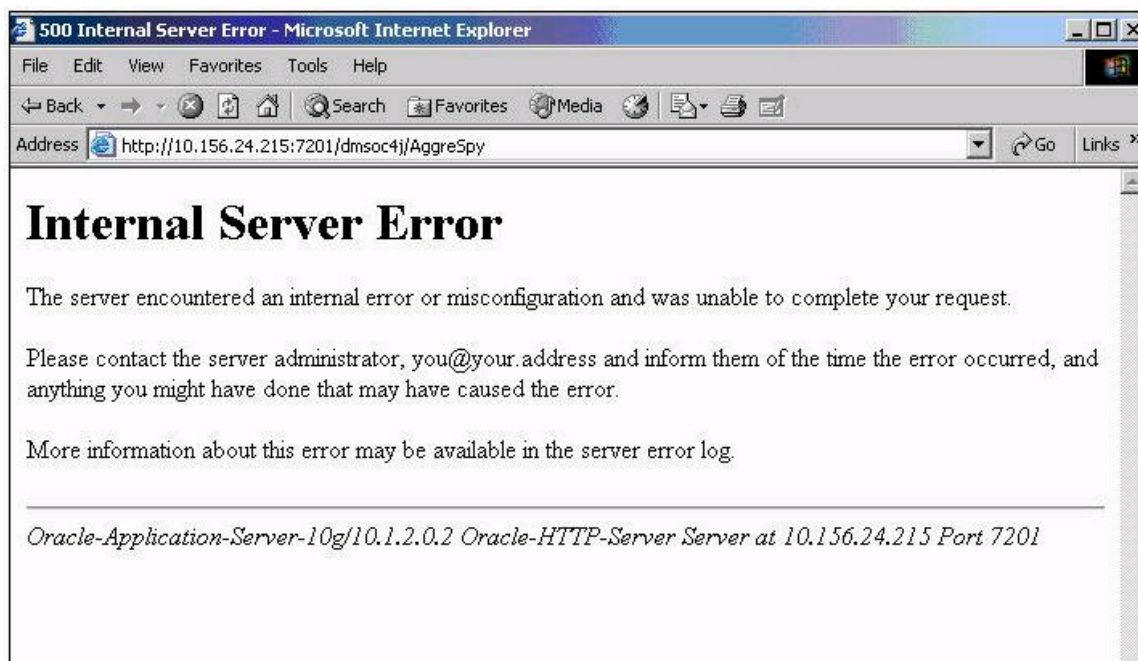
- A. It can be started and used only if Oracle HTTP Server is running.
- B. It deploys J2EE applications to an Oracle Application Server instance or cluster.
- C. It channels all events from different Oracle Application Server component instances.
- D. It starts, stops, restarts, and detects the termination of Oracle HTTP Server and OC4J processes.
- E. It synchronizes the configuration changes across Oracle Application Server instances in a cluster.

Answer: C, D

Question: 186

View the Exhibit and examine the error received while trying to access the statistics using the AggreSpy utility

Exam Name:	Oracle Application Server 10g:Administration II		
Exam Type	Oracle		
Exam Code:	1Z0-312	Total Questions:	216



What could have caused the error?

- A. OracleAS Web Cache is disabled.
- B. No OC4J instance has been started.
- C. The dms.conf file does not contain the local host as the server name.
- D. The number of Oracle HTTP Server child server processes is set to a low value.

Answer: B

Question: 187

In which three installations can the host name or domain name be changed using the chgiphost command? (Choose three.)

- A. J2EE and Web Cache
- B. Business Intelligence and Forms
- C. Infrastructure containing Identity Management only
- D. Infrastructure containing Metadata Repository only
- E. Infrastructure containing both Identity Management and Metadata Repository

Answer: A, B, C

Question: 188

You have the following entry in the reportserver.conf file, which is used to configure the Reports Server Cache:

```
<property name="cacheSize" value="50"/>
```

What happens when you run a report with the data output larger than the cache size?

- A. The report fails to run and shows an error.
- B. The report waits until space in the cache is available.
- C. The most recently used contents in the cache would be overwritten and the report would run successfully.

Exam Name:	Oracle Application Server 10g:Administration II		
Exam Type	Oracle		
Exam Code:	1Z0-312	Total Questions:	216

D. The least recently used contents in the cache would be overwritten and the report would run successfully.

Answer: A

Question: 189

You invoked the Oracle Application Server Repository Creation Assistant for installing the OracleAS Metadata Repository in an existing database as follows:
runRepca -OH /home/OraHome_1 -LOGDIR /home/oraias/repca/logs
The database has one of the Identity Management schemas already available in it. What would the Oracle Application Server Repository Creation Assistant do in this case?

- A. It asks for your confirmation to drop and re-create the schema.
- B. It renames the existing schema with a new system-generated name.
- C. It uses the existing schema and creates only the remaining schemas.
- D. It errors out until the schema is removed from the database manually.

Answer: A

Question: 190

Which option must you consider in an OracleAS cluster (Identity Management) in an active-active configuration?

- A. distributing the OracleAS components on both nodes
- B. installing OIM components on the local storage of each node
- C. configuring a single load balancer to redirect client requests
- D. installing OIM components on the shared storage that is used by all nodes

Answer: B

Question: 191

You are using two cache members in an OracleAS Web Cache cluster environment. You added a new member to the existing cluster. Which actions are performed when you add the new cache member? (Choose all that apply.)

- A. The cached contents of the old members are replicated to the new member.
- B. The OracleAS Web Cache recalculates the capacity of only the old members of the cluster.
- C. The OracleAS Web Cache recalculates the capacity of old and new members of the cluster.
- D. The OracleAS Web Cache propagates the configuration to old and new members of the cluster.
- E. The cache-specific information of the new cluster member is added to the configuration of the cache cluster.

Answer: C, D, E

Question: 192

In an OracleAS Cluster configuration, three Oracle Application Server instances have been configured to serve the same workload. Which two techniques could be used for request distribution among the active instances? (Choose two.)

- A. Configuring virtual hosts
- B. Using the load balancer router
- C. Address lists configuration at Application-level
- D. Configuring Oracle Process Manager and Notification Server (OPMN)

Exam Name:	Oracle Application Server 10g:Administration II		
Exam Type	Oracle		
Exam Code:	1Z0-312	Total Questions:	216

Answer: B, C

Question: 193

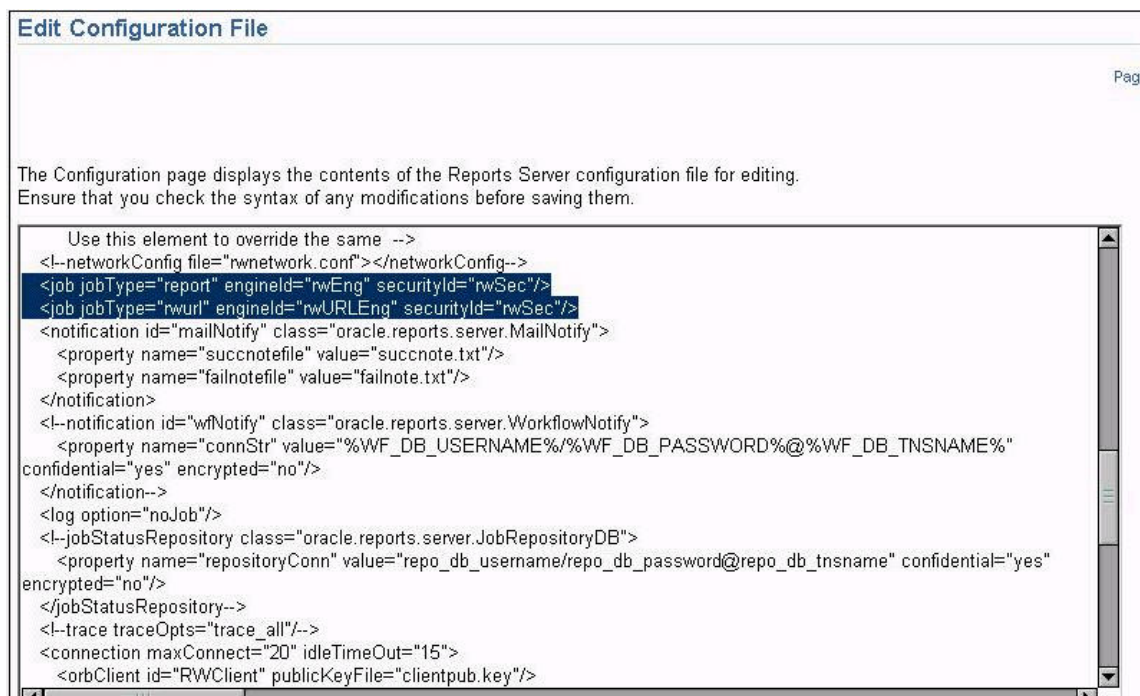
You plan to deploy a forms application that uses many custom icons. To avoid any performance issues while accessing the application, you plan to place all the icon files in a Java Archive (JAR) file and use it in the forms application. Which setting would you effect for this purpose?

- A. Set the ImageBase parameter in the formsweb.cfg file to CodeBase.
- B. Set the PATH environment variable to include the /forms/java directory.
- C. Set the ImageBase parameter in the formsweb.cfg file to DocumentBase.
- D. Remove the default.icons.iconpath parameter from the Registry.dat file.
- E. Remove the default values of splashScreen and background parameters from the formsweb.cfg file.

Answer: A

Question: 194

Exhibit:



What do the highlighted entries in the server configuration file do?

- A. assign IDs to engines
- B. create new engines to run reports
- C. associate the functionality with engines
- D. display job information whenever a report is accessed
- E. create new persistFile to record job status information

Answer: C

Question: 195

Exam Name:	Oracle Application Server 10g:Administration II		
Exam Type	Oracle		
Exam Code:	1Z0-312	Total Questions:	216

Which are the three no default destination types that you need to specify in the report server configuration file by using the destination element? (Choose three.)

- A. ftp
- B. file
- C. mail
- D. printer
- E. WebDav
- F. oraclePortal

Answer: A, E, F

Question: 196

You implemented the J2EE enterprise deployment topology in your company. You implemented a firewall in front of a load balancer that receives user requests on the Web tier. What is the reason for implementing a firewall?

- A. to bypass the load balancer
- B. to permit only HTTP(S) accesses through port 80 and 443
- C. to stop redirection of requests received on port 80 to port 443
- D. to allow direct communication from the load balancing router to the data-tier DMZ

Answer: B

Question: 197

You have deployed your forms application on an Oracle Application Server. You want to implement a five-minute maximum idle time to client connections, after which their connections are lost and the Forms Runtime process is shut down, freeing machine memory and CPU. How do you implement this?

- A. Set the heartbeat parameter to 7 minutes in the base HTML file and the FORMS_TIMEOUT parameter to 5 minutes in the default.env file.
- B. Set the heartbeat parameter to 5 minutes in the base HTML file and the FORMS_TIMEOUT parameter to 7 minutes in the default.env file.
- C. Set the heartbeat parameter to 5 minutes in the base HTML file, leaving the FORMS_TIMEOUT environment variable on its default value.
- D. Set the FORMS_TIMEOUT environment variable to 5 minutes and set the heartbeat parameter to any value less than 5 minutes in the base HTML file.

Answer: A

Question: 198

You want to install and configure a distributed OracleAS Cold Failover Cluster Infrastructure environment wherein, you:

1. Want to use the Oracle Database Automatic Storage Management (ASM) feature for the metadata repository
2. Do not have an existing Oracle Database 10g

Which task must you accomplish after installing the OracleAS Infrastructure?

- A. configuring a load balancer
- B. setting up the virtual IP address and the virtual host name
- C. setting up the active and passive nodes
- D. configuring the Cluster Synchronization Services (CSS) daemon

Exam Name:	Oracle Application Server 10g:Administration II		
Exam Type	Oracle		
Exam Code:	1Z0-312	Total Questions:	216

Answer: D

Question: 199

Following are the contents of the \$ORACLE_HOME/Apache/Apache/conf/dms.conf file:

```
# proxy to DMS AggreSpy Redirect /dms0/AggreSpy http://localhost:7200/dmsoc4j/AggreSpy
Listen 127.0.0.1:7200
OpmnHostPort http://localhost:7200
<VirtualHost 127.0.0.1:7200>
ServerName 127.0.0.1
```

You modified the contents of the file to replace all the occurrences of 127.0.0.1 with the IP address of a different machine which is 10.156.24.215 before using the dmstool utility. What could be the reason for this change?

- A. dmstool cannot be run from a local machine.
- B. AggreSpy cannot be run from a local machine.
- C. You want dmstool to be accessible from 10.156.24.215 only.
- D. You want to view the performance metrics from a remote host.

Answer: D

Question: 200

After you have installed Oracle Application Server on a host, which values can be changed using the chgiphost command? (Choose all that apply.)

- A. host name
- B. IP address
- C. domain name
- D. instance name
- E. infrastructure database name

Answer: A, B, C

Question: 201

In your OracleAS Cluster (Identity Management), you are using two nodes, NODE1 and NODE2. While performing a regular monitoring task, you realized that NODE1, which has the Directory Replication Server (oidrepld), has failed. This has caused the OID Monitor on NODE2 to start the Directory Replication Server (oidrepld) on NODE2 after five minutes. After fixing the problem in NODE1, you have restarted it. What would happen next?

- A. The Directory Replication Server (oidrepld) process continues to run on NODE2.
- B. The OID Monitor on NODE1 requests the OID Monitor on NODE2 to stop the server.
- C. The OID Monitor on NODE1 requests the OPMN daemon process to stop the server on NODE2.
- D. The Directory Replication Server (oidrepld) is automatically stopped on NODE2 after five minutes.

Answer: B

Question: 202

Which three database privileges are required for database users to use Discoverer EUL Command Line for Java? (Choose three.)

Exam Name:	Oracle Application Server 10g:Administration II		
Exam Type	Oracle		
Exam Code:	1Z0-312	Total Questions:	216

- A. create trigger
- B. create session
- C. create synonym
- D. create sequence
- E. create procedure

Answer: B, D, E

Question: 203

You executed the following command to change the host name of an Oracle Application Server installation:

```
[oracle@EDTDR7P1 scripts]$ ./chgiphost.sh -infra
Oracle Home set to /home/oracle/OraHome_1
Starting Change Hostname/IP...
Argument does not match install type. You may correct the mode and run again.
```

Why does the command fail to change the host name?

- A. The Infrastructure instance is currently not running.
- B. The command should be executed to run in silent mode.
- C. The host name/IP Address of Infrastructure installation cannot be changed.
- D. The Oracle home /home/oracle/OraHome_1 belongs to a middle-tier instance.

Answer: D

Question: 204

Which are the three prerequisites for end users who want to use Discoverer Plus OLAP to create queries against the OLAP data? (Choose three.)

- A. Users must be assigned the D4OPUB role.
- B. Users must be assigned the SELECT_CATALOG_ROLE role.
- C. User must be created on the database where Discoverer Catalog is installed.
- D. Users must be enabled to create public connections for Discoverer Plus OLAP.
- E. Users must be enabled to create private connections for Discoverer Plus OLAP.

Answer: A, C, E

Question: 205

Which two requirements should be implemented while performing installation for Oracle AS Disaster Recovery solution? (Choose two.)

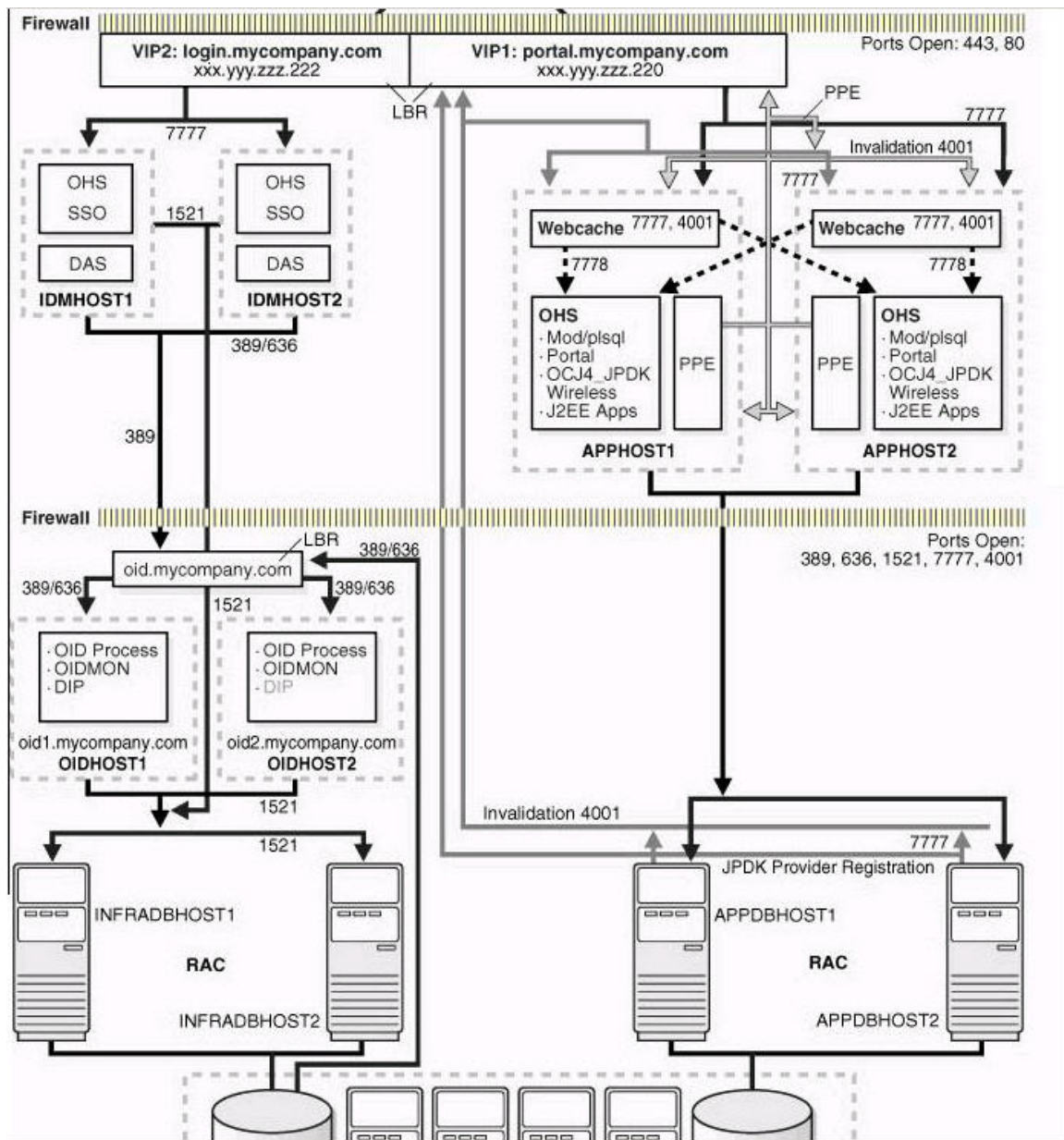
- A. Start the OracleAS Infrastructure services on the standby site before installing the middle tier for it.
- B. Ensure that the same ports are used by equivalent peer hosts on the production and standby sites.
- C. The number of instances required on the standby site should be identical to the number required on the production site.
- D. The directory path of Oracle homes for all the OracleAS instances on the standby site should be identical to that of the production site.

Answer: A, B

Question: 206

View the Exhibit that shows an enterprise deployment architecture implementation.

Exam Name:	Oracle Application Server 10g:Administration II		
Exam Type	Oracle		
Exam Code:	1Z0-312	Total Questions:	216



Which kind of applications would you be able to deploy on this architecture? (Choose all that apply.)

- A. All type of OracleAS Forms applications
- B. OracleAS Portal applications that use SSO for secure access
- C. J2EE applications that use Single Sign-On (SSO) authentication
- D. OracleAS Reports applications that need to be deployed using a paper layout

Answer: B, C

Question: 207

Which are the prerequisites for configuring OracleAS Guard servers? (Choose all that apply.)

Exam Name:	Oracle Application Server 10g:Administration II		
Exam Type	Oracle		
Exam Code:	1Z0-312	Total Questions:	216

- A. OracleAS Guard server has to be explicitly installed.
- B. OracleAS Guard server must be started on the infrastructure node in the standby farm.
- C. OracleAS Guard server, which is installed by default, should be started on each OracleAS instance.
- D. Invoke asgctl on one of the OracleAS Guard servers. That server becomes the coordinating server.

Answer: B, C, D

Question: 208

Developers in your company created the forms application executables in the Windows platform, whereas your Oracle Application Server is running on the Linux platform. As a Web administrator, what would you do to deploy the forms application?

- A. Store the executables received from the developers in ORACLE_BASE.
- B. Store the executables received from the developers in ORACLE_HOME.
- C. Generate Forms application executables and binaries on the Linux platform and store the binaries in a directory specified in the TNS_ADMIN variable.
- D. Generate Forms application executables and binaries on the Linux platform and store the binaries in a directory included in the FORMS_PATH variable.

Answer: D

Question: 209

View the Exhibit.

The screenshot displays the Oracle HTTP Server configuration interface. It is divided into three main sections: Logging, Client Request Handling, and Client Connection Handling. The Logging section includes fields for Error Log Filename, Error Logging Level (set to Notice), and IP Address Translation (set to None). It also features a table for Select Client Access Log Filename and Log Format, with the first row showing the log filename as /home/oracle/bi/Apache/Apache/bin/rotatelog /home/ora and the log format as common. The Client Request Handling section includes fields for Maximum Requests Processed Simultaneously (150), Request Timeout (seconds) (300), and a checkbox for Limit Requests Handled by each Child Server Process. The Client Connection Handling section includes a checkbox for Allow Multiple Requests per Connection (checked), Connection Timeout (seconds) (15), and a checkbox for Limit Requests per Connection (checked). Related Links for each section provide additional information: Error Rate (%), Error Log, Access Logs for Logging; Active Processes, Active Requests for Client Request Handling; and Active Connections for Client Connection Handling. At the bottom right, there are Revert and Apply buttons.

Which statement describes the effect of the setting for Oracle HTTP Server logging?

- A. Warning conditions are recorded only in the log file.
- B. Errors that require immediate action are recorded in the log file.
- C. Logging is performed only when OracleAS Web Cache is enabled.
- D. The IP address is recorded in the log files, thus reducing the performance cost.

Answer: D

Exam Name:	Oracle Application Server 10g:Administration II		
Exam Type	Oracle		
Exam Code:	1Z0-312	Total Questions:	216

Question: 210

In a stress-testing environment, with heavy load you receive the following error:
11313: The cache server reached the maximum number of allowed incoming connections.
Listening is temporarily suspended.

What possible actions could you take to resolve the error? (Choose all that apply.)

- A. Increase the cache memory limit for OracleAS Web Cache.
- B. Increase the origin server timeout parameter for OracleAS Web Cache.
- C. Increase the maximum incoming connections for OracleAS Web Cache.
- D. Lower the value for the Keep-Alive Timeout parameter for OracleAS Web Cache.
- E. Increase the value for the Keep-Alive Timeout parameter for OracleAS Web Cache.

Answer: C, D

Question: 211

You want to move a J2EE and Web Cache middle-tier instance in which J2EE applications are deployed, from the test environment to the production environment.

Which method would you use if the production environment has an operating system that is different from that of the test environment?

- A. Migrate the instance using Export/Import utilities.
- B. Clone the middle-tier instance without any deployed J2EE applications, use the target instance as the production middle-tier instance, and then redeploy the applications on it.
- C. Clone the middle-tier instance with the deployed J2EE applications and use the target instance as the production middle-tier instance.
- D. Install the middle-tier instance on the production environment and redeploy all the J2EE applications.

Answer: D

Question: 212

After installing and configuring an OracleAS Cold Failover cluster (Middle-Tier) environment with two nodes in a test environment, you observed that the application users are not able to access the OracleAS components.

While investigating the reason, you realized that all the configuration files are using the physical host name of the active node, thereby preventing the users from accessing the OracleAS components.

What would you do to ensure that users can start accessing the OracleAS components?

- A. Restart the OracleAS components on the active node.
- B. Restart the OracleAS components on the secondary node.
- C. Reconfigure the OracleAS components to use the virtual host and then restart the OracleAS components.
- D. Propagate the changes from the secondary node to the active node.

Answer: C

Question: 213

The following are the steps to start the OracleAS Cold Failover Cluster Infrastructure:

1. Set the ORACLE_SID environmental variable.
2. Start up the OracleAS Infrastructure database.
3. Start the OPMN daemon and OPMN-managed processes.
4. Enable virtual IP addresses.

Exam Name:	Oracle Application Server 10g:Administration II		
Exam Type	Oracle		
Exam Code:	1Z0-312	Total Questions:	216

5. Start Oracle Application Server Control.

In which order would you perform these steps to start the OracleAS Cold Failover Cluster?

- A. 1, 2, 3, 4, 5
- B. 1, 2, 4, 3, 5
- C. 5, 1, 2, 3, 4
- D. 3, 1, 2, 4, 5
- E. 4, 1, 2, 3, 5

Answer: E

Question: 214

You issued the following command to start the OracleAS Guard server:

`opmnctl startproc ias-component=DSA`

In which scenarios, would you issue the above command? (Choose all that apply.)

- A. when you start the DSA process for the first time
- B. when you change the port number for OracleAS Guard server
- C. when you add a new OracleAS middle tier to your production site
- D. when you make changes to any of the parameters in the dsa.conf file

Answer: A, B, C

Question: 215

Identify the option with the correct file description:

- A. formsweb.cfg: This is the default Forms Servlet configuration file.
- B. registry.dat: This file contains environment settings for Forms Runtime.
- C. default.env: This file enables you to configure Forms Trace by specifying which types of information to gather when a trace is initiated.
- D. ftrace.cfg: This file is used to change the default font, font mappings, and icons that Forms Services uses.

Answer: A

Question: 216

You want to change the IP address of the host that runs the OracleAS Infrastructure instance.

To achieve this purpose, you performed the following steps:

1. You have shut down all the middle-tier instances that use the OracleAS Infrastructure.
2. You have shut down the OracleAS Infrastructure instance.
3. You disabled automated startup scripts to make sure that Oracle Application Server processes do not start automatically after a restart of the host.

What would be your next step to change the IP address?

- A. Execute the `chgiphost` command and start the OracleAS Infrastructure and all the middle-tier instances.
- B. Change the IP address in the operating system (OS) and start the OracleAS Infrastructure and all the middle-tier instances.
- C. Execute the `chgiphost` command, change the IP address in the operating system (OS), and then start the OracleAS Infrastructure and all the middle-tier instances.
- D. Change the IP address in the operating system (OS), execute the `chgiphost` command, and then start the OracleAS Infrastructure and all the middle-tier instances.

Exam Name:	Oracle Application Server 10g:Administration II		
Exam Type	Oracle		
Exam Code:	1Z0-312	Total Questions:	216

Answer: D

End of Document