

<b>Exam Name:</b>	<b>Oracle Application Server 10g: Administration I</b>		
<b>Exam Type:</b>	<b>Oracle</b>		
<b>Exam Code:</b>	<b>1Z0-311</b>	<b>Total Questions:</b>	<b>131</b>

**Question: 1**

A portal user named USER1 registered a new database provider with the OracleAS Portal instance.

What are the actions that are implicitly performed as a result of the registration? (Choose all that apply.)

- A. A new page is created in the Portlet Repository page group.
- B. The provider registration information is saved in the dads.conf file.
- C. The provider registration information is saved in the portlet repository.
- D. A new database schema is created with the same name as the provider.

**Answer: A, C**

**Question: 2**

What makes it possible to access the portal from the OracleAS SSO Administer Partner Applications page?

- A. The administrator registers the portal manually to OracleAS SSO using the ossoreg.jar tool.
- B. The registration of the first external application with OracleAS SSO adds OracleAS Portal as a partner application.
- C. The ssocfg.sh script needs to be executed first to access the portal from the OracleAS SSO Administer Partner Applications page.
- D. During OracleAS middle-tier installation, the installer automatically adds the OracleAS Portal as a partner application for OracleAS SSO.

**Answer: D**

**Question: 3**

Today, most Java 2, Enterprise Edition (J2EE) applications use a database to have a persistent storage for data.

Which two statements regarding the data source are true? (Choose two.)

- A. J2EE applications cannot use more than one data source.
- B. J2EE applications use the data source to ensure portability across application servers.
- C. J2EE applications retrieve connections to the database through DataSource objects.
- D. J2EE applications use the data source to store the Java Naming and Directory Interface (JNDI) tree.

**Answer: B, C**

**Question: 4**

Which statements describe the functionality of OracleAS Single Sign-On? (Choose all that apply.)

- A. It can be used in either a secure sockets layer (SSL) mode or a non-SSL mode.
- B. It uses Single Sign-On SDK to enable the single sign-on functionality.
- C. It uses Oracle Application Server Containers for J2EE (OC4J) to store user information.
- D. It uses the Single Sign-On username and password from the Oracle Internet Directory (OID) to authenticate users.

**Answer: A, D**

**Question: 5**

You want to install Oracle Application Server 10g middle tier that enables you to generate Web-based reports and authenticate users accessing the middle-tier components.

<b>Exam Name:</b>	<b>Oracle Application Server 10g: Administration I</b>		
<b>Exam Type:</b>	<b>Oracle</b>		
<b>Exam Code:</b>	<b>1Z0-311</b>	<b>Total Questions:</b>	<b>131</b>

Which components must you have installed before you start installing OracleAS Portal and Wireless? (Choose all that apply.)

- A. Identity Management
- B. J2EE and Web Cache
- C. OracleAS Developer Kits
- D. OracleAS Metadata Repository

**Answer: A, D**

**Question: 6**

In Oracle Internet Directory (OID), which Directory Information Tree (DIT) attribute would you use to find out the object classes that are available in Identity Management Realm?

- A. orclUserObjectClass
- B. orclCommonUserSearchBase
- C. orclCommonGroupSearchBase
- D. orclCommonUserNickNameAttribute

**Answer: B**

**Question: 7**

While setting up the Oracle HTTP Server (OHS) for your Oracle Application Server 10g installation , you want to enable the server to set a host name that can be used to create redirection URLs, using the ServerName directive.

Within which two scopes can you specify the directive in the httpd.conf file? (Choose two.)

- A. in a block container
- B. in a location container
- C. in a directory container
- D. in a virtual host container
- E. in the server-level configuration

**Answer: D, E**

**Question: 8**

You have not set the Subscriber Search Base node in Directory Information Tree (DIT) in Identity Management Realm by using the orclSubscriberSearchBase attribute. You use Discovery mechanism to find out user information in the DIT.

Which statement is true in this scenario?

- A. This attribute cannot have null values.
- B. This attribute value points to the parent of Default Subscriber.
- C. This attribute would have the same value as User Search Base.
- D. This attribute would have the same value as Default Subscriber.
- E. This attribute would have the same value as Subscriber Nickname.

**Answer: B**

**Question: 9**

<b>Exam Name:</b>	<b>Oracle Application Server 10g: Administration I</b>		
<b>Exam Type:</b>	<b>Oracle</b>		
<b>Exam Code:</b>	<b>1Z0-311</b>	<b>Total Questions:</b>	<b>131</b>

You have a text file written in LDAP Data Interchange Format (LDIF) that contains the entries to be added to the Oracle Internet Directory (OID). Using this text file as a source file, you want to add the entries concurrently using multiple threads.

Which OID command-line tool would you use?

- A. ldapadd
- B. ldapbind
- C. ldapmoddn
- D. ldapaddmt

**Answer: D**

**Question: 10**

You have Oracle Application Server 10g instance running. For the parent Oracle HTTP Server process you want five child processes to be always running. In addition to this, you want to restrict the number of requests that are handled simultaneously by the child processes to 20.

Which options would you use to achieve this objective? (Choose all that apply.)

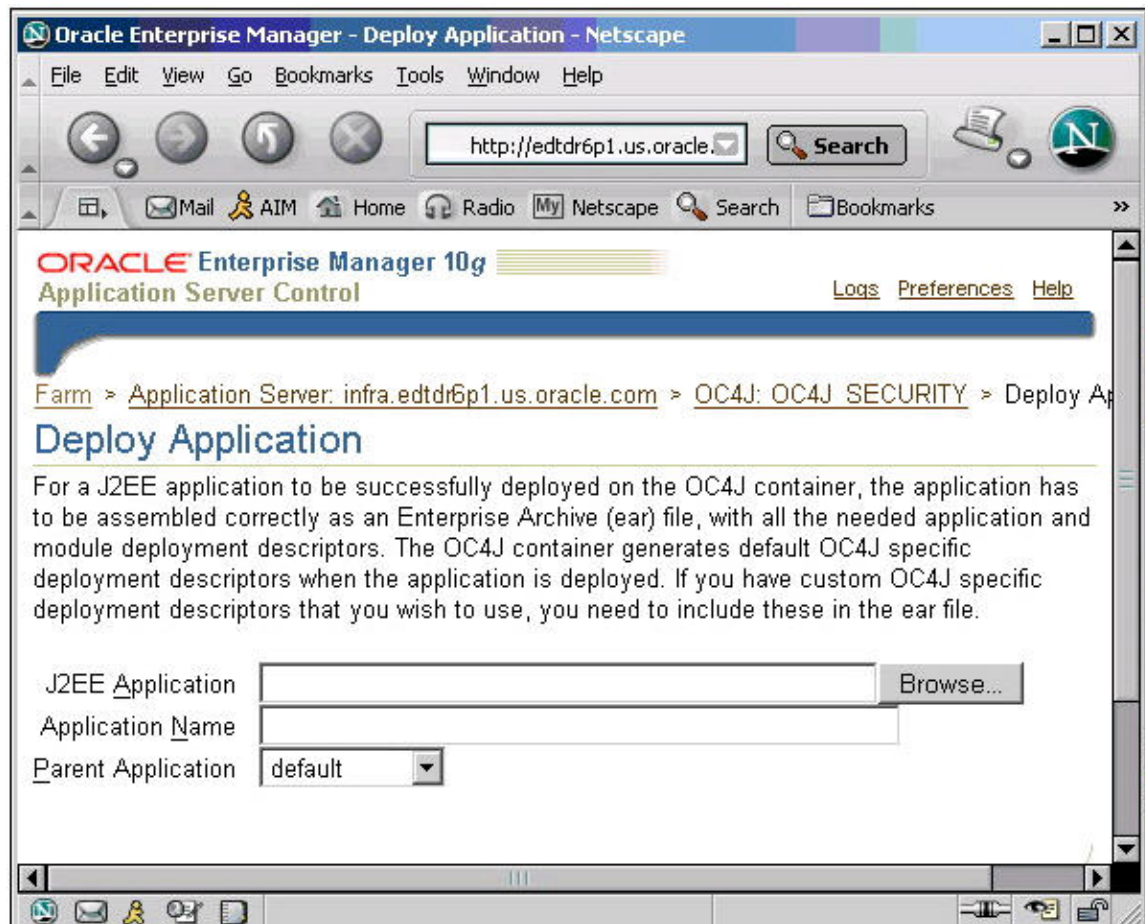
- A. MaxClients 20
- B. StartServers 5
- C. MaxSpareServers 5
- D. MinSpareServers 10
- E. MaxRequestsPerChild 20

**Answer: A, B**

**Question: 11**

View the Exhibit and examine the fields for which you provide the information.

Exam Name:	Oracle Application Server 10g: Administration I		
Exam Type:	Oracle		
Exam Code:	1Z0-311	Total Questions:	131



You are deploying a Java 2, Enterprise Edition (J2EE) application using Application Server Control Console.

What is the significance of selecting a Parent Application?

- A. to share services, such as EJBs among multiple applications
- B. to identify the instance in which the application is to be deployed
- C. to maintain uniformity in the URLs of all the J2EE applications deployed so far
- D. to allow all the users of the parent application to access the application you are deploying

**Answer: A**

**Question: 12**

In your Oracle HTTP Server configuration file, you have configured the following directives as:

StartServers 10

MaxSpareServers 20

MinSpareServers 15

Which statement is true?

- A. Twenty child processes would be running at any given point in time.
- B. Only 10 child processes would be running at any given point in time.
- C. Initially, the parent process would start 10 child processes, but later it would start additional child processes to maintain the value specified for MinSpareServers.
- D. Initially, the parent process would start 15 child processes, but later it would start more child

Exam Name:	Oracle Application Server 10g: Administration I		
Exam Type:	Oracle		
Exam Code:	1Z0-311	Total Questions:	131

processes automatically to reach the value specified for MaxSpareServers.

**Answer: C**

**Question: 13**

View the Exhibit and examine the contents of the portlist.ini file.

```

[Ports]
Oracle HTTP Server port = 7778
Oracle HTTP Server Listen port = 7779
Oracle HTTP Server SSL port = 4445
Oracle HTTP Server Listen (SSL) port = 4446
Oracle HTTP Server Diagnostic port = 7201
Application Server Control RMI port = 1851
Oracle Notification Server Request port = 6004
Oracle Notification Server Local port = 6101
Oracle Notification Server Remote port = 6201
Java Object Cache port = 7011
Log Loader port = 44001
DCM Java Object Cache port = 7102
Oracle Management Agent port = 1831
Application Server Control port = 1811
Oracle HTTP Server Listen port = 7779
Oracle HTTP Server Listen (SSL) port = 4446
Web Cache HTTP Listen port = 7778
Web Cache HTTP Listen (SSL) port = 4445
Web Cache Administration port = 4000
Web Cache Invalidation port = 4001
Web Cache Statistics port = 4002
\"portlist.ini\" 34L, 1232C

```

You changed the password for the portal schema in the infrastructure database by using the ALTER USER SQL command. You are able to connect as portal to the infrastructure database. You use the following URL to access the associated OracleAS Portal instance, but you are not able to log in as user portal:

http://host.domain:7778/pls/portal

Which two causes could be the reasons for you not being able to log in? (Choose two.)

- A. Incorrect port number is specified in the URL.
- B. The password for the PORTAL\_PUBLIC schema is not modified.
- C. The Portal User Profile portlet is not used to modify the portal user's profile.
- D. The portal schema password in Oracle Internet Directory (OID) is not changed.
- E. The connection information in the Database Access Descriptor (DAD) is not updated.

**Answer: D, E**

<b>Exam Name:</b>	<b>Oracle Application Server 10g: Administration I</b>		
<b>Exam Type:</b>	<b>Oracle</b>		
<b>Exam Code:</b>	<b>1Z0-311</b>	<b>Total Questions:</b>	<b>131</b>

**Question: 14**

You are creating a transport set to export a page group. The FINANCE\_APP application is listed as an external object in the Transport Set Objects page. You require this FINANCE\_APP application to be exported along with rest of the objects in the page group.

What would you do?

- A. promote the FINANCE\_APP application as an explicitly selected object
- B. specify the automatic\_merge parameter explicitly while creating the transport set dump file
- C. use the opeasst.csh script to export the FINANCE\_APP application along with the page group
- D. no explicit action required because the external objects are exported along with the page group by default

**Answer: A**

**Question: 15**

You want to create a user in Oracle Internet Directory (OID) who should be authenticated using Single Sign-On and should be able to retrieve user information from the Oracle Directory Server.

Which two tools can you use to create the user? (Choose two.)

- A. Oracle Wallet Manager
- B. OID Self Service Console
- C. Oracle Directory Manager
- D. OracleAS Single Sign-On Server
- E. Oracle Enterprise Manager 10g Application Server Control

**Answer: B, C**

**Question: 16**

You are maintaining user information in the Oracle Internet Directory (OID) for authentication. You want to find out whether a user, STEVE, has the last name BENNETT.

Which OID utility would you use?

- A. ldapbind
- B. ldifwrite
- C. ldapmoddn
- D. ldapcompare

**Answer: D**

**Question: 17**

In your Oracle Application Server 10g installation, you observe that the Oracle HTTP Server parent process is running as the Oracle user's process and currently using the default port number 7778. To comply with the development environment, you have been asked to use port number 80 for the parent process.

Which step would you perform after changing the Listen directive to 80 in the httpd.conf file to ensure that the changed port number is used by the parent process?

- A. start the process as the root user
- B. start the process as the Oracle user
- C. start the process as any user other than root and Oracle
- D. change the Group directive in the httpd.conf file to the group of the root user and start the

Exam Name:	Oracle Application Server 10g: Administration I		
Exam Type:	Oracle		
Exam Code:	1Z0-311	Total Questions:	131

process as the Oracle user

**Answer: A**

**Question: 18**

In your existing Oracle Application Server 10g installation, you observe that the Oracle HTTP Server (OHS) error log file, error\_log, is available in the location set in the ErrorLog directive. Because the location set in this directive is running out of space and there is no free space available in other locations, you want to suppress further logging of any kind of messages, temporarily, into the error log file.

What would you do to achieve this objective?

- A. set ErrorLog to NULL
- B. set ErrorLog to NONE
- C. set ErrorLog to /dev/null
- D. remove the ErrorLog directive from the configuration file
- E. remove the TransferLog directive from the configuration file

**Answer: C**

**Question: 19**

While setting up the Oracle HTTP Server (OHS) for your Oracle Application Server 10g installation, you set the container directives in the httpd.conf file as shown in the Exhibit.

```
<Location /server-status>
    SetHandler server-status
    Order deny,allow
    Deny from all
    Allow from edtdr5p1.us.oracle.com
</Location>
<Directory />
    Options FollowSymLinks
    AllowOverride None
</Directory>
<Files ~ "^\.ht">
    Order allow,deny
    Deny from all
</Files>
```

Which three statements are true? (Choose three.)

- A. The Files container is used to match objects at file-system level.
- B. The Location container is used to match objects at the block level.
- C. The Directory container is always processed from the shortest directory component to the longest.
- D. The Location container is always processed last of the listed directives in the file irrespective of where it appears in the configuration file.

**Answer: A, C, D**

**Question: 20**



<b>Exam Name:</b>	<b>Oracle Application Server 10g: Administration I</b>		
<b>Exam Type:</b>	<b>Oracle</b>		
<b>Exam Code:</b>	<b>1Z0-311</b>	<b>Total Questions:</b>	<b>131</b>

In your Oracle Application Server 10g installation, you want to restrict the number of requests allowed per connection to 16.

Which two actions would you take to achieve this objective? (Choose two.)

- A. Limit 16
- B. KeepAlive ON
- C. MaxClients 16
- D. KeepAliveTimeout 16
- E. MaxRequestsPerChild 16
- F. MaxKeepAliveRequests 16

**Answer: B, F**

**Question: 21**

You are working as an Oracle Application Server administrator for a sales company that has a global Web site. You find that the event log size is 1.8 GB and is approaching the maximum limit of 2 GB. As immediate action is required, you decided to manually initiate the rollover of event logs.

What would happen during the manual rollover of an event log file?

- A. OracleAS Web Cache deletes the existing event log file and creates a new file.
- B. OracleAS Web Cache stops writing to the event\_log file, flushes, and then starts writing again.
- C. OracleAS Web Cache continues writing to the event\_log file if there is no operating system restriction on the file size.
- D. OracleAS Web Cache saves the current log file to the log\_file.yyyymmdd\_hhmm file, and then writes new log information to the event\_log file.

**Answer: D**

**Question: 22**

The options describe the request flow patterns from the client to the server through the Oracle Application Server components.

- A. Browser > HTTP Server > Web Cache > OC4J Engine > database
- B. Browser > Web Cache > HTTP Server > OC4J Engine > database
- C. Browser > HTTP Server > OC4J Engine > Web Cache > database
- D. Client > Forms runtime process > Forms listener servlet > HTTP Server > database
- E. Wireless client > OracleAS Portal > OracleAS Wireless > WAP gateway

Which options show the normal request flow?

- A. A only
- B. B only
- C. C only
- D. D only
- E. E only
- F. both A and D
- G. both D and E

**Answer: B**

**Question: 23**



<b>Exam Name:</b>	<b>Oracle Application Server 10g: Administration I</b>		
<b>Exam Type:</b>	<b>Oracle</b>		
<b>Exam Code:</b>	<b>1Z0-311</b>	<b>Total Questions:</b>	<b>131</b>

You want authorized users to use the single authentication feature to gain easy access to external applications.

Which components must be installed before using OracleAS Single Sign-On? (Choose all that apply.)

- A. OracleAS Wireless
- B. OracleAS Certificate Authority
- C. OracleAS Identity Management
- D. OracleAS Metadata Repository

**Answer: C, D**

**Question: 24**

Using Oracle Internet Directory (OID) Self Service Console you have created a new group, PRODGRP1, with no users in this group as members. While assigning privileges to this group, you get the error shown in the Exhibit.



Which task would you accomplish to overcome this error message?

- A. add orcladmin user to PRODGRP1 as a member
- B. modify Group Visibility to Private for the group
- C. select "Make this group privileged" option by editing the group
- D. grant full Delegated Administration Services (DAS) privilege to the group by assigning the Privilege Group role

**Answer: C**

**Question: 25**

You can export a wallet to a file system only if \_\_\_\_.

- A. it has at least one certificate
- B. it does not contain a certificate request that is pending
- C. it has at least one certificate request with key size 1024 or more
- D. it is already uploaded to a Lightweight Directory Access Protocol (LDAP) directory

**Answer: A**

<b>Exam Name:</b>	<b>Oracle Application Server 10g: Administration I</b>		
<b>Exam Type:</b>	<b>Oracle</b>		
<b>Exam Code:</b>	<b>1Z0-311</b>	<b>Total Questions:</b>	<b>131</b>

**Question: 26**

You are an Oracle Application Server administrator. You want to delegate the administration of users in Oracle Internet Directory to Mark.

To which three groups should Mark be added? (Choose three.)

- A. Edit User
- B. Edit Group
- C. Delete User
- D. Create User
- E. Create Group
- F. Delete Group
- G. UDDI Replicators

**Answer: A, C, D**

**Question: 27**

You are using Oracle Internet Directory (OID) to store user information that is being used by Oracle Application Server components for authentication. You want to search and modify the information for a user named STEVE.

Which Directory Information Tree (DIT) attribute would you use to search for the user in Identity Management Realm?

- A. orclUserObjectClass
- B. orclCommonUserSearchBase
- C. orclCommonGroupSearchBase
- D. orclCommonUserNickNameAttribute

**Answer: B**

**Question: 28**

You installed Oracle Application Server 10g middle tier with installation type as Portal and Wireless.

Which two options could you use to confirm whether Oracle Internet Directory (OID) is installed and functional? (Choose two.)

- A. access the httpd.conf file
- B. use the opmnctl status command
- C. use the dcmctl getstate command
- D. use the Oracle HTTP Server Welcome Page
- E. use Oracle Enterprise Manager 10g Application Server Control

**Answer: B, E**

**Question: 29**

You are an Oracle Application Server administrator. You plan to install OracleAS Infrastructure but you find that some other Oracle products are already installed on the computer.

What would you do to avoid any installation problems that might arise due to the products that are already installed?

- A. comment the entry in oratab and oraLoc files

<b>Exam Name:</b>	<b>Oracle Application Server 10g: Administration I</b>		
<b>Exam Type:</b>	<b>Oracle</b>		
<b>Exam Code:</b>	<b>1Z0-311</b>	<b>Total Questions:</b>	<b>131</b>

- B. remove the settings for TMP and DISPLAY variables
- C. rename the existing components in oraInventory
- D. remove the settings for ORACLE\_HOME and ORACLE\_SID environment variables

**Answer: D**

**Question: 30**

As an Oracle Application Server administrator, you plan to install OracleAS Infrastructure. Before starting the installation, you created a staticports.ini file containing component names and port numbers. You specified the full path to the staticports.ini file on the runInstaller command line.

What could be the reason to create the staticports.ini file and use it in the installation?

- A. You want to run the installer remotely.
- B. You want to run the installer in silent mode.
- C. You want to use this file instead of portlist.ini file.
- D. You want to assign nondefault port numbers to the components during the installation.
- E. You want to unassign these port numbers for the components that are currently running on these ports.

**Answer: D**

**Question: 31**

You execute the following command in your Oracle Application Server 10g installation to start the Oracle Internet Directory (OID) Server Instance with a new instance ID:

```
$ oidctl connect=infra server=oidldapd instance=1 host=edtdr5p1.us.oracle.com start
```

The command does not error out. But while trying to locate the server instance using the Process Status (ps) operating system utility, you realize that the instance has not started.

What could be the reason?

- A. The OID Listener process has not started.
- B. The OID server processes have not started.
- C. The Oracle HTTP Server process has not started.
- D. The Oracle Internet Directory (OID) Monitor process has not started.
- E. The Oracle Enterprise Manager 10g Application Server Control page has not started.

**Answer: D**

**Question: 32**

Which two statements are correct regarding OracleAS Certificate Authority (OCA)? (Choose two.)

- A. OCA stores the certificates in the single sign-on (SSO) server.
- B. OCA can be used for issuing user certificates as well as server certificates.
- C. OCA automatically publishes SSO-authenticated client certificates in Oracle Internet Directory (OID).
- D. The Administration page of OCA can be used for changing the OCA Web Administrator password.
- E. OCA can be used for generating certificate requests that can be submitted to external certificate authority (CA) services.

**Answer: B, C**

**Question: 33**

View the Exhibit and examine the processes.

Exam Name:	Oracle Application Server 10g: Administration I		
Exam Type:	Oracle		
Exam Code:	1Z0-311	Total Questions:	131

```

C:\WINNT\system32\telnet.exe
[oracle@EDTDR5P1 bin]$ opmnctl status

rprocess: in Instance: infra.edtor pL.us.oracle.com
-----
ias-component | process-type | pid | status
-----
OID           | OID          | 21652 | Alive
OC4J          | OC4J_SECURITY | 21719 | Alive
OC4J          | oca          | 21718 | Alive
OC4J          | home         | 505   | Alive
HTTP_Server   | HTTP_Server  | 21636 | Alive
dcm-daemon    | dcm-daemon   | 22079 | Alive
LogLoader     | logloaderd   | N/A   | Down
[oracle@EDTDR5P1 bin]$

```

Soon after the installation of OracleAS Infrastructure 10g, you used Oracle Process Manager and Notification Server (OPMN) to check the status of the processes. Which statement regarding the infrastructure instance is true?

- A. The instance is down, because the logloader process is down.
- B. The instance needs to be restarted, because the logloader process is down.
- C. The instance is functional, but the logloader process is not started by the installer.
- D. The instance is up, but the logloader process is down because of an error that occurred while data was being read from a log file.

**Answer: C**

#### Question: 34

View the Exhibit and examine the server mapping for unnamed site.

Server Mapping for Unnamed Site			
If a request matches no named site, then OracleAS Web Caches uses this ordered list of host and port expressions. The first match for a request wins.			
		<input type="button" value="Create"/> <input type="button" value="Reorder"/>	
<input type="button" value="Edit"/> <input type="button" value="Delete"/>			
Select	Order	Host:Port Expression	Origin Servers
<input checked="" type="radio"/>	1	*.7778	edtdr6p1.us.oracle.com:7779
<input type="radio"/>	2	*.*	edtdr6p1.us.oracle.com:7779

Which statement regarding the server mapping for unnamed site is true?

- A. You should always use the same port number for the site and the origin server.
- B. You can use the wildcard character \* in the Port Expression field to map the port to different sites.
- C. You should give a higher priority to the mappings that use the wildcard character \* to encompass a broader scope.

<b>Exam Name:</b>	<b>Oracle Application Server 10g: Administration I</b>		
<b>Exam Type:</b>	<b>Oracle</b>		
<b>Exam Code:</b>	<b>1Z0-311</b>	<b>Total Questions:</b>	<b>131</b>

D. You can use the wildcard character \* in the Host Name field to map multiple site names to one or more application Web servers or proxy servers.

**Answer: D**

**Question: 35**

You are working as an Oracle Application Server administrator and have deployed a Web application by using the following command:

```
dcmctl deployApplication -file /private/compsal.war -a compsal -co pd1 -rc compsal
```

Which statement regarding the command is true?

- A. The -rc option creates the compsal user with root privileges in the host.
- B. The -co option copies the application to the pd1 directory if it is already installed.
- C. The -co option determines the database instance in which the OracleAS Metadata Repository is stored.
- D. The -co option specifies the Oracle Application Server Containers for J2EE (OC4J) instance to which the application will be deployed.

**Answer: D**

**Question: 36**

You are an Oracle Application Server administrator in an online bookstore company.

The following are some of the pages that belong to the bookstore's Web site:

- A. The ID page, which prompts the user to enter a login Email.  
This page never changes.
- B. The catalog page displays a list of books to the customers.  
This page changes whenever new books are bought by the store.
- C. The used books page that allows customers to trade used books.  
This page is updated every 24 hours.
- D. The recently purchased books page. This page is updated on an hourly basis.

You want to define Web Cache expiration rules for pages in the Web site. You discovered that a programmed expiration policy is not available for any of the pages.

For which pages would you define an expiration rule using the Create Expiration Rule window?

- A. A, B, and C
- B. A, B, and D
- C. both A and B
- D. both C and D
- E. all four pages

**Answer: D**

**Question: 37**

You want users to execute CGI scripts in your Oracle Application Server 10g installation.

Because of some setup restrictions in your installation, you cannot include the Options directive in the Oracle HTTP Server configuration file.

Which directive would you use to enable CGI script execution?

- A. Alias

<b>Exam Name:</b>	<b>Oracle Application Server 10g: Administration I</b>		
<b>Exam Type:</b>	<b>Oracle</b>		
<b>Exam Code:</b>	<b>1Z0-311</b>	<b>Total Questions:</b>	<b>131</b>

- B. Files
- C. AliasMatch
- D. ScriptAlias

**Answer: D**

**Question: 38**

You set the following directives in the httpd.conf file to set up a virtual host:

```
<VirtualHost 130.35.174.159>
ServerName www.host1.com
ServerAdmin webmaster@oracle.com
StartServers 10
DocumentRoot /home/oracle/infra/doc
ErrorLog /home/oracle/infra/error
TransferLog /home/oracle/infra/log
</VirtualHost>
```

When you attempt to start the Oracle HTTP Server, it errors out displaying a syntax error in the VirtualHost container directive. On investigation, you observe that you have set a directive that is allowed to be used only in the server configuration context.

Which directive would you remove from the VirtualHost container directive to start the Oracle HTTP Server?

- A. ErrorLog
- B. TransferLog
- C. ServerAdmin
- D. StartServers
- E. DocumentRoot

**Answer: D**

**Question: 39**

Your server crashed, and you had to reinstall Oracle HTTP Server on the same host. The URL for your host remains the same. You have a backup of the wallet file from the old server. The wallet contained certificates from Oracle Certificate Authority (OCA) as well external certificate authority (CA).

How can you ensure that there is no impact on Secure Sockets Layer (SSL) certificates that you have been using?

- A. You need to just restore backup of the wallet file.
- B. You need to restore backup of the wallet file and get new certificates from OCA as well as an external CA.
- C. You need to restore backup of the wallet file and get a new certificate from an external CA only. New certificate from OCA is not required.
- D. Certificates are specific to the HTTP Server installation and, therefore, you need to create a new wallet file and get new certificates from both the OCA and an external CA.

**Answer: A**

**Question: 40**

You have a Java 2, Enterprise Edition (J2EE) application containing a servlet. You want to connect the servlet to your production database by configuring the appropriate data source.

<b>Exam Name:</b>	<b>Oracle Application Server 10g: Administration I</b>		
<b>Exam Type:</b>	<b>Oracle</b>		
<b>Exam Code:</b>	<b>1Z0-311</b>	<b>Total Questions:</b>	<b>131</b>

Which two files contain entries that can be used to map application Java Naming and Directory Interface (JNDI) names to data sources? (Choose two.)

- A. web.xml
- B. orion-web.xml
- C. data-sources.xml

**Answer: A, B**

**Question: 41**

You are working as an OracleAS Certificate Authority (OCA) Web administrator and you have lost the password to your private key for the Web administrator certificate.

What would you do?

- A. reinstall the OCA server
- B. remove the certificate from Oracle Internet Directory and generate a new certificate request using wallet manager
- C. stop OCA server, revoke the OCA Web administrator's certificate, start OCA server, and then request for another certificate
- D. revoke the OCA Web administrator's certificate, generate a new certificate request using Wallet Manager, and then issue a new certificate
- E. stop Oracle Application Server Containers for J2EE (OC4J) for the OCA instance, revoke the OCA Web administrator's certificate, generate a new certificate request using wallet manager, stop OC4J for the OCA instance, and then receive a new certificate from OCA

**Answer: C**

**Question: 42**

While installing Oracle Application Server middle tier, you select the "Portal and Wireless" option.

Which four components are configured by default? (Choose four.)

- A. OracleAS Portal
- B. OracleAS Wireless
- C. Oracle HTTP Server
- D. OracleAS Web Cache
- E. OracleAS Personalization
- F. OracleAS Reports Services
- G. Oracle Application Server Containers for J2EE (OC4J)

**Answer: A, C, D, G**

**Question: 43**

Which statement regarding OracleAS Web Cache users and passwords is true?

- A. The invalidator user can start, stop, or restart OracleAS Web Cache.
- B. The passwords are stored in the webcache.xml file in an encrypted form.
- C. The invalidator user has the same password as that of the ias\_admin user.
- D. The administrator user cannot send invalidation requests with OracleAS Web Cache Manager.

**Answer: B**

**Question: 44**



<b>Exam Name:</b>	<b>Oracle Application Server 10g: Administration I</b>		
<b>Exam Type:</b>	<b>Oracle</b>		
<b>Exam Code:</b>	<b>1Z0-311</b>	<b>Total Questions:</b>	<b>131</b>

You are an Oracle Application Server administrator working on the host, edtdr5p1.us.oracle.com. You find that the Application Server Control port number is 1810.

How would you start the Application Server Control console process?

- A. by using the emctl utility
- B. by using the dcmctl utility
- C. by using the URL http://edtdr5p1.us.oracle.com:1810
- D. by using the Oracle Process Manager and Notification Server (OPMN) command-line interface

**Answer: A**

**Question: 45**

View the Exhibit and examine the User Entry page of the Delegated Administration Services (DAS) Web site.

Select	Directory Attribute Name	UI Label	Required	Viewable	Self Editable	Password Reset Validation	Searchable	UI Type
<input checked="" type="radio"/>	c	Country	<input type="checkbox"/>	<input checked="" type="checkbox"/>	<input checked="" type="checkbox"/>	<input type="checkbox"/>	<input type="checkbox"/>	Single Line Text
<input type="radio"/>	cn	User Name	<input checked="" type="checkbox"/>	<input checked="" type="checkbox"/>	<input type="checkbox"/>	<input type="checkbox"/>	<input checked="" type="checkbox"/>	Single Line Text
<input type="radio"/>	departmentnumber	Department	<input type="checkbox"/>	<input checked="" type="checkbox"/>	<input checked="" type="checkbox"/>	<input type="checkbox"/>	<input type="checkbox"/>	Single Line Text
<input type="radio"/>	displayname	Known As	<input type="checkbox"/>	<input checked="" type="checkbox"/>	<input checked="" type="checkbox"/>	<input type="checkbox"/>	<input type="checkbox"/>	Single Line Text
<input type="radio"/>	employeeNumber	Employee Number	<input type="checkbox"/>	<input checked="" type="checkbox"/>	<input type="checkbox"/>	<input type="checkbox"/>	<input type="checkbox"/>	Number

You have selected the Viewable option for the employeeNumber directory attribute.

Which statement regarding this attribute is true?

- A. It cannot have null values.
- B. It can be modified by any user even if that user is not authenticated.
- C. It can be modified only by a user who is authenticated.
- D. It can be used to search user information in Oracle Internet Directory (OID).
- E. It can be set by DAS administrators only and viewed by the user and the administrator.

**Answer: E**

**Question: 46**

You are trying to access a partner application on Oracle Application Server.

Because you are not authenticated, which component displays a username and password page that prompts you to supply this information?

- A. partner application
- B. the mod\_osso module

<b>Exam Name:</b>	<b>Oracle Application Server 10g: Administration I</b>		
<b>Exam Type:</b>	<b>Oracle</b>		
<b>Exam Code:</b>	<b>1Z0-311</b>	<b>Total Questions:</b>	<b>131</b>

- C. Oracle Internet Directory
- D. the Single Sign-On server

**Answer: D**

**Question: 47**

You require a certificate for your Web server.

Which tool would you use to create a certificate request?

- A. OCA User pages
- B. Oracle Wallet Manager
- C. Application Server Control
- D. Oracle Enterprise Security Manager

**Answer: B**

**Question: 48**

You have installed Oracle Application Server 10g infrastructure and you have not changed the port number that OracleAS components are using.

You have also not configured OracleAS Web Cache. By default, which port number would you use in the URL while accessing the Delegated Administration Services (DAS) Web site?

- A. the same as the Oracle Net Listener port number
- B. the same as the Oracle Internet Directory port number
- C. the same as the Application Server Control port number
- D. the same as the Oracle HTTP Server Listen port number
- E. the same as the Oracle Internet Directory Secured Socket Layer (SSL) port number

**Answer: D**

**Question: 49**

You deployed a Java 2, Enterprise Edition (J2EE) application, newsched.ear, on the host, edtdr6p1.us.oracle.com, and tried to access the provider test page by using the following URL:

<http://edtdr6p1.us.oracle.com:7777/newsched/providers>

You received the response "403 Forbidden".

What is the reason for this message?

- A. The Web provider is empty.
- B. The port number used in the URL is busy.
- C. The access to the provider test page is disabled.
- D. The application deployment was not successful.

**Answer: C**

**Question: 50**

You deployed a Web application on an OC4J instance by using Application Server Control Console.

Which configuration files in the OC4J instance would be modified to define the configuration for the Web application? (Choose all that apply.)

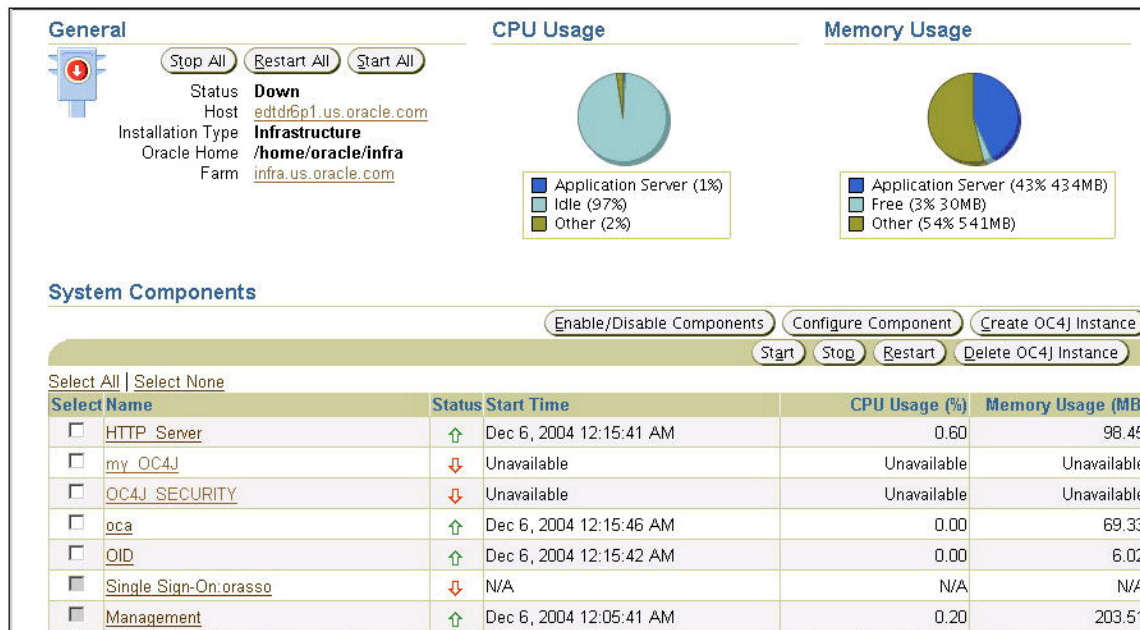
<b>Exam Name:</b>	<b>Oracle Application Server 10g: Administration I</b>		
<b>Exam Type:</b>	<b>Oracle</b>		
<b>Exam Code:</b>	<b>1Z0-311</b>	<b>Total Questions:</b>	<b>131</b>

- A. server.xml
- B. ejb-jar.xml
- C. default-web-site.xml
- D. internal\_settings.xml

**Answer: A, C**

**Question: 51**

View the Exhibit and examine the system components.



What would happen if you want to start all the processes and you click the Start All button?

- A. All the processes are stopped and started together.
- B. Only the processes that are stopped will be started.
- C. This will not work because some processes are already started.
- D. All the processes that are started are indicated by filled check boxes.

**Answer: B**

**Question: 52**

In your existing Oracle Application Server 10g installation, you want to create a website using OracleAS portal that uses Single Sign-On (SSO) for user authentication. Before creating the site , you want to confirm that the SSO module is supported in your installation.

Which two files can you refer to to confirm that the SSO module is supported in your installation? (Choose two.)

- A. the httpd.pid file
- B. the access\_log file
- C. the access.conf file
- D. the sso\_apache.conf file
- E. the oracle\_apache.conf file

<b>Exam Name:</b>	<b>Oracle Application Server 10g: Administration I</b>		
<b>Exam Type:</b>	<b>Oracle</b>		
<b>Exam Code:</b>	<b>1Z0-311</b>	<b>Total Questions:</b>	<b>131</b>

**Answer: D, E**

**Question: 53**

As an Oracle Application Server Administrator, you would like documents to be delivered faster.

What are the two file types that you would compress to reduce overall latency? (Choose two.)

- A. all text files
- B. all HTML files
- C. all executable files
- D. all the files zipped using WinZip
- E. all image files (GIF, JPEG, BMP, and so on)

**Answer: A, B**

**Question: 54**

You configured G Mail as an external application on OracleAS Single Sign-On server, using the following values:

Login URL: <https://gmail.google.com/?dest=http%3A%2F%2Fgmail.google.com%2Fgmail>  
 Username/ID Field Name: login  
 Password Field Name: passwd h  
 Type of Authentication Used: POST  
 Field Name: persistent Y  
 Field Value: [off]

Which statement regarding the "Type of Authentication Used" field is true?

- A. Browser submits login credentials in the application URL.
- B. Browser submits login credentials as part of the login URL.
- C. Browser submits login credentials within the body of the form.
- D. Browser uses this configuration only if it is used with partner applications.

**Answer: C**

**Question: 55**

View the Exhibit and examine the processes.

Exam Name:	Oracle Application Server 10g: Administration I		
Exam Type:	Oracle		
Exam Code:	1Z0-311	Total Questions:	131

```

C:\WINNT\system32\telnet.exe
Processes in Instance: bi.edtdr5p1.us.oracle.com
-----+-----+-----+-----+
ias-component | process-type | pid | status
-----+-----+-----+-----+
wireless      | OC4J_wireless | 15091 | Alive
wireless      | messaging_server | 15090 | Alive
wireless      | performance_server | 15088 | Alive
Discoverer    | PreferenceServer | 14971 | Alive
Discoverer    | OAD             | 15052 | Alive
Discoverer    | OSAgent         | 14970 | Alive
OC4J          | OC4J_Portal     | 13458 | Alive
OC4J          | OC4J_BI_Forms   | 13324 | Alive
OC4J          | home            | 13165 | Alive
WebCache      | WebCacheAdmin   | 16154 | Alive
WebCache      | WebCache        | N/A   | Down
HTTP_Server   | HTTP_Server     | 24874 | Alive
dcm-daemon    | dcm-daemon      | 9357  | Alive
LogLoader     | logloaderd      | N/A   | Down

[oracle@EDTDR5P1 bin]$

```

Which statement regarding the OracleAS Web Cache component is true?

- A. The logloader process must be started before starting the WebCache process.
- B. The OracleAS Web Cache component is started, because one of the processes is alive.
- C. The Web Cache administration page cannot be accessed, because one of the processes is not alive.
- D. The administration page can still be accessed although the OracleAS Web Cache component is down.

**Answer: D**

**Question: 56**

Which two statements are correct regarding user certificates? (Choose two.)

- A. Oracle Wallet Manager uses only user certificates and not trusted certificates.
- B. A user certificate always includes the digital signature of the issuing certificate authority (CA).
- C. User certificates do not validate other user certificates, except when they are used as trusted certificates.
- D. For each certificate request, multiple user certificates can be installed in the same wallet at the same time.

**Answer: B, C**

**Question: 57**

You created a user, USER01, in Oracle Internet Directory (OID).

When the user accesses the directory using the Delegated Administration Service (DAS) Web page, which user does DAS use to log in to OID on behalf of the user?

<b>Exam Name:</b>	<b>Oracle Application Server 10g: Administration I</b>		
<b>Exam Type:</b>	<b>Oracle</b>		
<b>Exam Code:</b>	<b>1Z0-311</b>	<b>Total Questions:</b>	<b>131</b>

- A. a proxy user
- B. the orcladmin user
- C. the ias\_admin user
- D. the same as the end user
- E. any user that has the Allow account management privilege

**Answer: A**

**Question: 58**

You are working on Oracle Application Server 10g.

Which command-line utility does Oracle Corporation recommend for starting or stopping an OC4J instance?

- A. emctl
- B. dcmctl
- C. ocactl
- D. opmnctl

**Answer: D**

**Question: 59**

You created an OC4J instance using a command-line utility. You need to verify that the OC4J instance has been created.

Which command-line utility would you use?

- A. emctl
- B. dcmctl
- C. oidctl
- D. ocactl

**Answer: B**

**Question: 60**

Identify the uses of Oracle Identity Management. (Choose all that apply.)

- A. It is used to store user information centrally.
- B. It is used by OracleAS Web Cache to retrieve user information.
- C. It is used by OracleAS Single Sign-On to authenticate user information.
- D. It is used by Oracle database to authenticate database users while accessing the database.

**Answer: A, C**

**Question: 61**

Using Delegated Administration Services (DAS), which task can you accomplish?

- A. manage OracleAS Single Sign-On server
- B. manage Oracle Internet Directory processes
- C. register applications that are created using OracleAS Portal
- D. manage user and group entries in Oracle Internet Directory (OID)
- E. monitor system components in an Oracle Application Server 10g installation

**Answer: D**

<b>Exam Name:</b>	<b>Oracle Application Server 10g: Administration I</b>		
<b>Exam Type:</b>	<b>Oracle</b>		
<b>Exam Code:</b>	<b>1Z0-311</b>	<b>Total Questions:</b>	<b>131</b>

**Question: 62**

You added a new data source specification to the data-source.xml file. You then restarted the Oracle Application Server Containers for J2EE (OC4J) server instance.

What could be the reason for restarting the OC4J instance?

- A. The Java Naming and Directory Interface (JNDI) tree needs to be re-created.
- B. The web.xml file needs to be parsed again to instantiate the DataSource objects.
- C. The orion-web.xml file needs to be parsed again to instantiate the DataSource objects.
- D. The data-sources.xml file need to be parsed again to instantiate the DataSource objects.

**Answer: D**

**Question: 63**

You are working on an Oracle Application Server 10g installation. You want to shut down all Oracle Process Manager and Notification Server (OPMN) managed processes for the local Oracle Application Server instance but not the OPMN itself.

What would you do?

- A. execute the opmnctl reload command
- B. execute the opmnctl stopall command
- C. execute the opmnctl stopproc command
- D. execute the opmnctl shutdown command

**Answer: C**

**Question: 64**

You are working as an Oracle Application Server administrator. The Human Resources (HR) department has informed you that the documents relating to HR policies are stale. You find that the updated documents are already uploaded to the Web site. You also find that caching rules are in place and you need to fix the problem immediately.

What would you do to present the correct version of HR-related documents to the employees?

- A. request the documents so that they get refreshed in cache because of the default expiration rule
- B. request the documents in cache so that they are marked as invalid, and then restart the Web Cache
- C. invalidate the documents in cache to remove them from the cache so that they are reloaded on the next request
- D. invalidate the documents in cache so that the user is prompted to select the correct version of the documents

**Answer: C**

**Question: 65**

You are working for a company as an Oracle Application Server administrator. You are responsible for the performance of the company's Web site and you use Health Monitor of OracleAS Web Cache Manager in your routine performance analysis. You find that Average Latency is very high. On further investigation you find that the problem is not due to the origin server port.

What could be the reason for the high Average Latency?



<b>Exam Name:</b>	<b>Oracle Application Server 10g: Administration I</b>		
<b>Exam Type:</b>	<b>Oracle</b>		
<b>Exam Code:</b>	<b>1Z0-311</b>	<b>Total Questions:</b>	<b>131</b>

- A. The age of documents in the cache is high.
- B. Compression was enabled for large text documents.
- C. Compression was enabled for documents that do not need it.
- D. Manual invalidation of documents has not been performed since the Web Cache was started.

**Answer: C**

**Question: 66**

As an Oracle Application Server administrator, you executed the following Distributed Configuration Management (DCM) command from an instance of an Application Server farm that has multiple instances:

```
[oracle@EDTDR5P1 bin]$ dcmctl listComponents
```

Which statement regarding the command is true?

- A. The command returns a list of components in all the application server instances.
- B. The command returns a list of components in the current application server instance.
- C. The command returns a list of components in the instance that has Oracle home specified in the ORACLE\_HOME environment variable.
- D. The command returns a list of components that are managed by Oracle Process Manager and Notification Server (OPMN) in all the instances.

**Answer: B**

**Question: 67**

As an Oracle Application Server administrator, you plan to install OracleAS Infrastructure. In the process of installation, you selected the "OracleAS Metadata Repository" option from the available installation options.

Which statements regarding the installation are correct? (Choose all that apply.)

- A. OracleAS Web Cache is not available.
- B. Oracle HTTP Server is started by default.
- C. Database Control can be used to manage the installation.
- D. Oracle Enterprise Manager Application Server Control is started by default.

**Answer: A, C**

**Question: 68**

You need to export and import portal objects from a development instance to the production instance of OracleAS Portal. Identify the required steps and their correct sequence that you would follow to export and import portal objects.

- 1.Create transport sets and extract content to transport tables.
- 2.Generate the transport set dump file by using the command-line script.
- 3.Transfer the script and dump file to the target system.
- 4.Execute the command-line script to import the dump file to the target.
- 5.Import the objects from the transport tables to the target portal.
- 6.Restart the HTTP Server.
- 7.Execute the ptlasst.csh script.

- A. 2, 1, 4, 3, 5, and 7; step 6 is not required.
- B. 1, 2, 3, 5, 4, and 6; step 7 is not required.

<b>Exam Name:</b>	<b>Oracle Application Server 10g: Administration I</b>		
<b>Exam Type:</b>	<b>Oracle</b>		
<b>Exam Code:</b>	<b>1Z0-311</b>	<b>Total Questions:</b>	<b>131</b>

- C. 1, 2, 3, 4, 5, and 6; step 7 is not required.  
D. 1, 2, 3, 4, and 5; steps 6 and 7 are not required.

**Answer: D**

**Question: 69**

Starting, stopping, and restarting of which two components results in the start, stop, and restart of the Single Sign-On component? (Choose two.)

- A. dcm\_daemon
- B. Oracle HTTP Server
- C. OC4J\_SECURITY instance
- D. Oracle Internet Directory (OID)

**Answer: B, C**

**Question: 70**

You need to update the OracleAS Metadata Repository for all Portal instances defined in the Portal Dependency Settings file with the latest configuration settings in the iasconfig.xml file.

What would you do?

- A. execute the ptlconfig script
- B. use the dcmctl command-line utility
- C. update the portal.conf file using Application Server Control
- D. update the portalreg.xml file by using Application Server Control

**Answer: A**

**Question: 71**

After starting the Oracle Application Server 10g instance, you want to obtain information about CPU and memory utilization for each of the Oracle Application Server components.

Which tools can be used to get the desired information? (Choose two.)

- A. emctl
- B. Listener Control (LSNRCTL)
- C. Application Server Control Console
- D. Distributed Configuration Management (DCM)
- E. Oracle Process Manager and Notification Server (OPMN)

**Answer: C, E**

**Question: 72**

In your Oracle Application Server 10g installation, you want to use Delegated Administrative Service (DAS) along with Oracle Internet Directory (OID) to manage subscriber-level and site-level information. But, you observe that DAS components are currently not functional.

Which options could you use to start DAS components? (Choose all that apply.)

- A. use the dcmctl command to start all system components that start DAS components
- B. use the opmnctl command to start all system components that start DAS components
- C. use the oidmon command to start the OID Monitor process that starts DAS components
- D. use the oidctl command to start the OID Server Instance process that starts DAS components
- E. use Oracle Enterprise Manager 10g Application Server Control to start the OC4J\_SECURITY

<b>Exam Name:</b>	<b>Oracle Application Server 10g: Administration I</b>		
<b>Exam Type:</b>	<b>Oracle</b>		
<b>Exam Code:</b>	<b>1Z0-311</b>	<b>Total Questions:</b>	<b>131</b>

and HTTP\_Server components that start DAS components

**Answer: B, E**

**Question: 73**

On Friday, you successfully installed Oracle Application Server 10g middle tier with installation type as Portal and Wireless on a Linux operating system. On Monday, you are unable to access the Oracle HTTP Server Welcome Page. On investigation, you find that all Oracle Application Server components except the OracleAS Console are down.

Which options could you use to start the process? (Choose all that apply.)

- A. emagent start
- B. emutil register
- C. opmnctl startall
- D. emctl start iasconsole
- E. Oracle Enterprise Manager 10g Application Server Control

**Answer: C, E**

**Question: 74**

You disabled the OC4J instance component, OC4J\_DEMOS, by using Application Server Control Console.

Which two statements are true regarding the OC4J\_DEMOS component? (Choose two.)

- A. Entries in the associated application.xml file would be modified.
- B. All the applications deployed to the OC4J\_DEMOS OC4J instance would be unavailable.
- C. The component would not be started when the associated Oracle Application Server instance is started.
- D. The component can be automatically started and enabled by executing the opmnctl startproc process-type=OC4J\_DEMOS command.

**Answer: B, C**

**Question: 75**

A certificate authority (CA) signs a certificate with \_\_\_\_\_.

- A. its public key
- B. its private key
- C. the user's public key
- D. the user's private key

**Answer: B**

**Question: 76**

You are working on Oracle Application Server 10g. You set the Port directive for controlling access to Oracle HTTP Server.

Which two statements regarding the Port directive are true? (Choose two.)

- A. You must specify the Listen directive to use the Port directive.
- B. You must set UseCanonicalName to ON to use the Port directive.
- C. You can specify only one active Port directive in a single configuration.
- D. You need not specify the ServerName directive if the Port directive has been specified.

<b>Exam Name:</b>	<b>Oracle Application Server 10g: Administration I</b>		
<b>Exam Type:</b>	<b>Oracle</b>		
<b>Exam Code:</b>	<b>1Z0-311</b>	<b>Total Questions:</b>	<b>131</b>

E. You can specify the port of the listener using the Port directive if no Listen or BindAddress directives are present.

**Answer: C, E**

**Question: 77**

Identify the steps and the correct sequence in which they will be performed during an SSL handshake procedure.

1. The client browser generates a session key and sends it to the server.
2. The server sends its certificate to the client, and the client verifies whether the server's certificate was signed by a trusted certificate authority (CA).
3. If client authentication is required, then the client sends its certificate to the server, and the server verifies whether the client's certificate was signed by a trusted certificate authority (CA).
4. The client and the server decide which cipher suite to use.

- A. 4, 1, 2, 3  
 B. 1, 3, 2, 4  
 C. 1,2, 3, 4  
 D. 4, 2, 3, 1

**Answer: D**

**Question: 78**

You want to change the ports on which OracleAS Web Cache receives browser requests.

**Listen Ports**  
 OracleAS Web Cache receives browser requests on listen ports. Changing listen ports may affect settings in site definitions. Changing a port number or IP address for Web Cache may affect other Oracle Application Server components. Parameters in other components may need to be updated to ensure that ports are not in conflict. In particular, page redirects in the Origin server may require reconfiguration.

IP Address	Port	Protocol	Require Client - Side Certificates For HTTPS	Wallet For HTTPS	Delete
* <input type="text"/>	<input type="text" value="7778"/>	<input type="text" value="HTTP"/>	<input type="text" value="Not Required"/>	<input type="text"/>	

If the new port you plan to assign is already in use by some other component, what would happen?

- A. OracleAS Web Cache reverts the port number to the default value.  
 B. OracleAS Web Cache registers the new port number but fails on startup.  
 C. OracleAS Web Cache displays an error indicating that the port number cannot be assigned.  
 D. OracleAS Web Cache attempts to assign other port numbers from a range of possible port numbers.

**Answer: B**

**Question: 79**

You need to move the newly created EAST\_SALES\_STL portal page style from the source instance to the target instance. The EAST\_SALES\_STL portal page style belongs to the SALES\_PGRP page group.

<b>Exam Name:</b>	<b>Oracle Application Server 10g: Administration I</b>		
<b>Exam Type:</b>	<b>Oracle</b>		
<b>Exam Code:</b>	<b>1Z0-311</b>	<b>Total Questions:</b>	<b>131</b>

Which statement is correct?

- A. You would use the opeasst.csh script to export the portal page style.
- B. You can export the portal page style only if the entire SALES\_PGRP page group has been imported to the target system earlier.
- C. You can export the portal page style only if you select the "Export Access Control Lists" option while creating the transport set.
- D. You would need to export the PORTAL\_PUBLIC schema because OracleAS Portal does not support the export of individual page styles.

**Answer: B**

**Question: 80**

You are configuring OracleAS Single Sign-On (SSO) Server so that it is accessible via SSL.

Which script/file would you use to enable SSO Server Login/Logout and Administration pages to be accessible via HTTPS.

- A. ssocfg.sh
- B. ossoca.jar
- C. ossoreg.jar
- D. ssooconf.sql
- E. reRegisterSSO.sh

**Answer: A**

**Question: 81**

In your existing Oracle Application Server 10g installation, you observe that the Oracle HTTP Server (OHS) error log file, error\_log, is available in the location set in the ServerRoot directive. Because the location set in the ServerRoot directive is running out of space, you want to place the error\_log file in a different location.

Which directive would you use to place the file in another location?

- A. PidFile
- B. ErrorLog
- C. AccessLog
- D. TransferLog
- E. CoreDumpDirectory

**Answer: B**

**Question: 82**

View the Exhibit and examine the commands.

Exam Name:	Oracle Application Server 10g: Administration I		
Exam Type:	Oracle		
Exam Code:	1Z0-311	Total Questions:	131

```

C:\WINNT\system32\telnet.exe
[oracle@EDTDR6P1 bin]$ emctl stop iasconsole
TZ set to US/Eastern
Oracle Enterprise Manager 10g Application Server Control Release 10.1.2.0.0
Copyright (c) 1996, 2004 Oracle Corporation. All rights reserved.
http://edtdr6p1.us.oracle.com:1810/emd/console/aboutApplication

Stopping Oracle Enterprise Manager 10g Application Server Control ... .. Stopp
[oracle@EDTDR6P1 bin]$ emctl secure iasconsole
TZ set to US/Eastern
Oracle Enterprise Manager 10g Application Server Control Release 10.1.2.0.0
Copyright (c) 1996, 2004 Oracle Corporation. All rights reserved.
http://edtdr6p1.us.oracle.com:1810/emd/console/aboutApplication
Generating Standalone Console Root Key (this takes a minute)... Done.
Fetching Standalone Console Root Certificate... Done.
Generating Standalone Console Agent Key... Done.
Storing Standalone Console Agent Key... Done.
Generating Oracle wallet for the Standalone Console Agent... Done.
Configuring Agent for HTTPS... Done.
EMD_URL set in /home/oracle/infra/sysman/config/emd.properties
Generating Standalone Console Java Keystore... Done.
Configuring the website ... Done.
Updating targets.xml ... Done.
[oracle@EDTDR6P1 bin]$ emctl start iasconsole
TZ set to US/Eastern
Oracle Enterprise Manager 10g Application Server Control Release 10.1.2.0.0
Copyright (c) 1996, 2004 Oracle Corporation. All rights reserved.
https://edtdr6p1.us.oracle.com:1810/emd/console/aboutApplication
Starting Oracle Enterprise Manager 10g Application Server Control ..... started
[oracle@EDTDR6P1 bin]$

```

As an Oracle Application Server administrator, you started the Application Server Control console.

What is the effect of executing these commands?

- A. Application Server Control is not single sign-on enabled.
- B. Provides HTTPS browser access to Application Server Control.
- C. Only the root user is able to start and stop the Application Server Control console process.
- D. Access to Application Server Control is enabled through your Web browser by using the nonsecure HTTP protocol.

**Answer: B**

#### Question: 83

You plan to create an OC4J instance using a command-line utility.

Which command-line utility would you use?

- A. emctl
- B. dcmctl
- C. oidctl
- D. ocactl
- E. opmnctl

**Answer: B**

#### Question: 84

You are deploying a Java 2, Enterprise Edition (J2EE) application with the following details:

The name of the Enterprise Archive (EAR) file is mktsal.ear.

There are three Oracle Application Server Containers for J2EE (OC4J) instances: home, inst1\_OC4J, and inst2\_OC4J.

All the three OC4J instances are in the same instance bi.edtdr6p1.us.oracle.com.

<b>Exam Name:</b>	<b>Oracle Application Server 10g: Administration I</b>		
<b>Exam Type:</b>	<b>Oracle</b>		
<b>Exam Code:</b>	<b>1Z0-311</b>	<b>Total Questions:</b>	<b>131</b>

You executed the following command to deploy the application:  
dcmctl deployApplication -i bi.edtdr6p1.us.oracle.com -file mktsal.ear -a mktsal

In which OC4J instance would the application be deployed?

- A. only home
- B. all the three
- C. only inst1\_OC4J
- D. only inst2\_OC4J

**Answer: A**

**Question: 85**

You have installed Oracle Application Server 10g Infrastructure on a host machine, prod-serv.us.oracle.com.

You have not changed the port numbers that OracleAS components are using and they are as follows:

Oracle HTTP Server port = 7778  
Oracle HTTP Server Listen port = 7777  
Oracle Internet Directory port = 3060  
Oracle Internet Directory (SSL) port = 3131  
Application Server Control port = 1810  
Oracle Net Listener = 1521

Which URL would you use to access the Delegated Administration Services (DAS) Web site?

- A. http://prod-serv.us.oracle.com:7778/oiddas
- B. http://prod-serv.us.oracle.com:1810/oiddas
- C. http://prod-serv.us.oracle.com:7777/oiddas
- D. http://prod-serv.us.oracle.com:1521/oiddas
- E. http://prod-serv.us.oracle.com:3060/oiddas

**Answer: C**

**Question: 86**

View the Exhibit and examine a section of the httpd.conf file.



Exam Name:	Oracle Application Server 10g: Administration I		
Exam Type:	Oracle		
Exam Code:	1Z0-311	Total Questions:	131

```

ErrorLog /home/oracle/infra/error
TransferLog /home/oracle/infra/log

<VirtualHost 130.35.174.159>
    ServerAdmin webmaster@oracle.com
    ServerName www.vhost1.com
    DocumentRoot /home/oracle/infra/vhost1/doc
    ErrorLog /home/oracle/infra/vhost1/error
    TransferLog /home/oracle/infra/vhost1/log
</VirtualHost>
<VirtualHost 130.35.174.160>
    ServerAdmin webmaster@oracle.com
    ServerName www.vhost2.com
    DocumentRoot /home/oracle/infra/vhost2/doc
    ErrorLog /home/oracle/infra/vhost2/error
    TransferLog /home/oracle/infra/vhost2/log
</VirtualHost>

```

Which two statements are true? (Choose two.)

- A. The error log files for the server and virtual hosts will be created in the locations that are set in the respective contexts by the ErrorLog directive.
- B. The custom log files for the server and virtual hosts would be created in the locations that are set in the respective contexts by the TransferLog directive.
- C. While starting the Oracle HTTP Server, it would result in an error because the ServerAdmin directive cannot have same values in two different virtual host contexts.
- D. The ErrorLog and TransferLog directives that are set in the virtual host context would be ignored because these directives are already set in the server configuration context.
- E. While starting the Oracle HTTP Server, it would result in an error because the ErrorLog and TransferLog directives cannot be set in the virtual host context as well as in the server configuration context.

**Answer: A, B**

**Question: 87**

One of the users in your Oracle Application Server 10g installation, USER01, complains that the following error occurs while accessing the Delegated Administration Services (DAS) home page: Your password has expired.

Which two tools can you use to change the password for the user USER01? (Choose two.)

- A. Oracle Wallet Manager
- B. Oracle Directory Manager
- C. Oracle Single Sign-On Server
- D. Oracle Internet Directory (OID) Self Service Console
- E. Oracle Enterprise Manager 10g Application Server Control

**Answer: B, D**

**Question: 88**

While setting up a Directory container directive in Oracle HTTP Server configuration file, you want:

<b>Exam Name:</b>	<b>Oracle Application Server 10g: Administration I</b>		
<b>Exam Type:</b>	<b>Oracle</b>		
<b>Exam Code:</b>	<b>1Z0-311</b>	<b>Total Questions:</b>	<b>131</b>

1. the users to be able to include static files in the directory that is set using the Directory directive but not be able to execute their own scripts
2. the server to follow the symbolic links for which the target file or directory is owned by the same user ID as the link

Which two parameters would you use for the Options directive while defining directives in the directory context? (Choose two.)

- A. Includes
- B. MultiViews
- C. IncludesNOEXEC
- D. FollowSymLinks
- E. SymLinksIfOwnerMatch

**Answer: C, E**

**Question: 89**

After installing Oracle Application Server 10g, you execute the ldapcheck command to find out the status of Oracle Internet Directory (OID) components.

Which statement is true?

- A. It provides the status of the OID processes.
- B. It provides the status of the OID system component.
- C. It provides information about OID components that are installed.
- D. It provides connection statistics of LDAP requests that are received by the OID Server.
- E. It provides the statistics of network connection between OID Server Instance and Oracle Database.

**Answer: A**

**Question: 90**

In your Oracle Application Server 10g installation, you have Delegated Administrative Service (DAS) along with Oracle Internet Directory (OID) to manage subscriber-level and site-level information. You want to stop the DAS components for regular maintenance tasks.

Which options would you use to achieve this? (Choose all that apply.)

- A. use the dcmctl command to stop all system components
- B. use the oidmon command to stop the OID Monitor process
- C. use the opmnctl command to stop OC4J\_SECURITY component
- D. use the oidctl command to stop the OID server instance process
- E. use Oracle Enterprise Manager 10g Application Server Control to stop the OC4J\_SECURITY component

**Answer: C, E**

**Question: 91**

You want to stop and restart OracleAS Certificate Authority (OCA).

Which option would you use?

- A. the oactl command-line tool only
- B. OCA Administration page or the oactl command-line tool
- C. Application Server Control or the oactl command-line tool

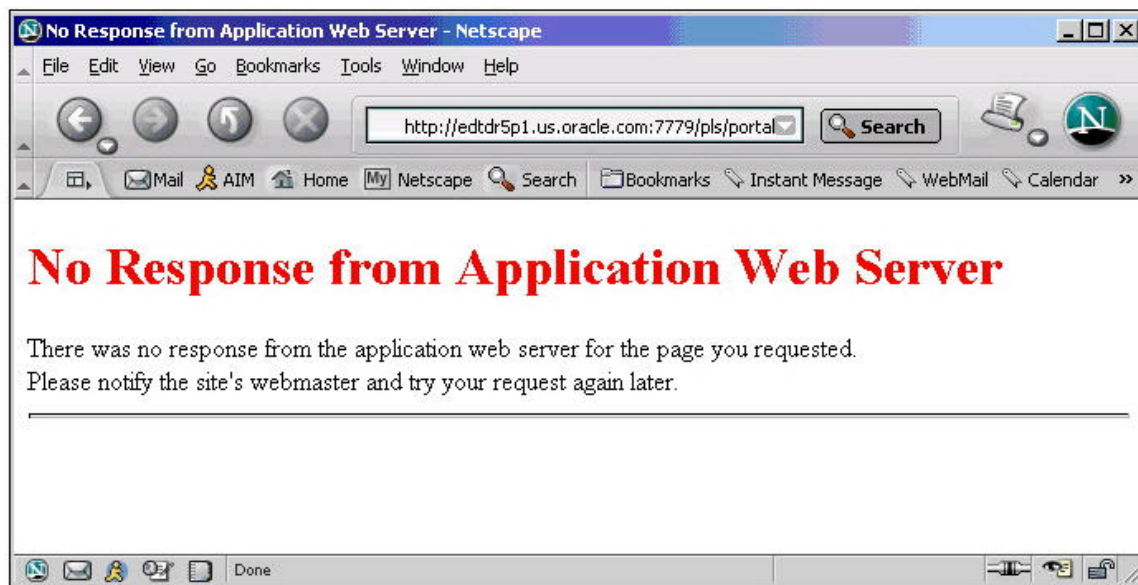
Exam Name:	Oracle Application Server 10g: Administration I		
Exam Type:	Oracle		
Exam Code:	1Z0-311	Total Questions:	131

D. Oracle Enterprise Security Manager or the OCA Administration page

**Answer: A**

**Question: 92**

You installed Oracle Application Server 10g middle tier with installation type as Portal and Wireless. While trying to access the OracleAS Portal Welcome Page, you get the error shown in the Exhibit.



While investigating the reason, you find that OracleAS Portal is successfully installed and the port number that it uses is correct. OracleAS Infrastructure, which is hosting the metadata repository, is fully operational and the OracleAS Portal component is currently running, but you are still unable to access OracleAS Portal.

What are two things you could do to be able to access the OracleAS Portal? (Choose two.)

- A. use the dcmctl command to start the OracleAS Portal
- B. use the opmnctl command to start the OracleAS Portal
- C. use the opmnctl command to start the Oracle HTTP Server
- D. use Oracle Enterprise Manager 10g Application Server Control to start OracleAS Portal
- E. use Oracle Enterprise Manager 10g Application Server Control to start Oracle HTTP Server

**Answer: C, E**

**Question: 93**

Your organization's Web site hosts a lot of useful content. Some users have no complaints while downloading data from the site. However other users complain about very slow download rate. While studying the httpd.conf file, you find the following settings:

```

KeepAliveTimeout 10
KeepAlive ON
MaxKeepAliveRequests 20
ThreadsPerChild 5
MaxClients 100

```

<b>Exam Name:</b>	<b>Oracle Application Server 10g: Administration I</b>		
<b>Exam Type:</b>	<b>Oracle</b>		
<b>Exam Code:</b>	<b>1Z0-311</b>	<b>Total Questions:</b>	<b>131</b>

Which action would you take to address the issue of slow download rate?

- A. set the KeepAlive directive to OFF
- B. increase the value for the MaxClients directive
- C. increase the value of the ThreadsPerChild directive
- D. increase the value for the KeepAliveTimeout directive
- E. decrease the value of the MaxKeepAliveRequests directive to 10

**Answer: D**

**Question: 94**

You need to save a certificate request in a file system directory by using Oracle Wallet Manager.

What would you do?

- A. export the certificate request
- B. use the File > Save As option
- C. import the certificate request and save it
- D. upload the certificate request to the Directory Service

**Answer: A**

**Question: 95**

View the Exhibit.

Exam Name:	Oracle Application Server 10g: Administration I		
Exam Type:	Oracle		
Exam Code:	1Z0-311	Total Questions:	131

You have created a user, OIDUSER01, and you want the user to be able to perform the following activities:

- i. Assign privileges to the users
- ii. Unlock the user
- iii. Assign privileges to a set of users

Which options would you select? (Choose all that apply.)

- A. Allow group editing
- B. Allow user creation
- C. Allow service management
- D. Allow account management
- E. Allow privilege assignment to users
- F. Allow privilege assignment to groups
- G. Allow Delegated Administration Service configuration

**Answer: D, E, F**

**Question: 96**

You have the following set of requirements:

<b>Exam Name:</b>	<b>Oracle Application Server 10g: Administration I</b>		
<b>Exam Type:</b>	<b>Oracle</b>		
<b>Exam Code:</b>	<b>1Z0-311</b>	<b>Total Questions:</b>	<b>131</b>

- i. While configuring Oracle HTTP Server for Secure Sockets Layer (SSL) certificates, you do not want to provide wallet password in clear text format for security reasons.
- ii. The Web server should run in automatic restart mode without requiring the administrator to provide the wallet password manually.

What would you do?

- A. enable the Auto Login feature for the wallet
- B. save the wallet in the System Default directory
- C. upload the wallet to the Lightweight Directory Access Protocol (LDAP) server
- D. export the wallet to the file system and specify the location in the ssl.conf file
- E. use the File > Save As option to save the wallet in the file system and specify the location in the http.conf file

**Answer: A**

**Question: 97**

While testing an OracleAS Portal instance, you received the following error:

Error: Could not open Web cache connection. (WWC-40019)

You want to check if the error has occurred because the OracleAS Web Cache invalidation port value in OracleAS Portal is different from the actual OracleAS Web Cache invalidation port.

Which file on the middle tier would you examine to check the portal settings for the OracleAS Web Cache invalidation?

- A. cache.xml
- B. portal.conf
- C. iasconfig.xml
- D. portalReg.xml

**Answer: C**

**Question: 98**

Using the Delegated Administration Services (DAS) Web site, you want to manage the user information in the Oracle Internet Directory (OID). While trying to access the DAS Web site, you realize that the Web site is not able to authenticate login information that you provide. It just shows a page cannot be displayed error.

What could be the reason for this problem?

- A. The mod\_osso module is not configured.
- B. The OracleAS Infrastructure database is not running.
- C. The OracleAS middle-tier components are not running.
- D. The orasso database access descriptor (DAD) is not configured.

**Answer: B**

**Question: 99**

The OC4J instance, OC4J\_TEST, contains only those applications that are used for testing. You use these applications only when you need to debug other applications and not on a regular basis.

What would you do to disable all the test applications?

- A. modify the entries in the application.xml file

<b>Exam Name:</b>	<b>Oracle Application Server 10g: Administration I</b>		
<b>Exam Type:</b>	<b>Oracle</b>		
<b>Exam Code:</b>	<b>1Z0-311</b>	<b>Total Questions:</b>	<b>131</b>

- B. disable the OC4J\_TEST OC4J instance using Application Server Control Console
- C. execute the dcmctl updateConfig -t oc4j OC4J\_TEST porce command
- D. disable specific applications in that instance by using Application Server Control Console

**Answer: B**

**Question: 100**

You want to find out the password policies that exist in Oracle Internet Directory.

Which two tools would you use? (Choose two.)

- A. ldapbind
- B. ldapcheck
- C. dsml2ldif
- D. ldapsearch
- E. ldapcompare
- F. Oracle Directory Manager

**Answer: D, F**

**Question: 101**

Your attempt to start OracleAS Web Cache failed due to a port conflict. You find that port conflicts are reported in the event log file.

Which are the two ways of resolving port conflicts? (Choose two.)

- A. using dcmctl
- B. modifying the internal.xml file
- C. using Application Server Control Console
- D. modifying the webcache.xml file if the administration port is in conflict

**Answer: C, D**

**Question: 102**

As an Oracle Application Server administrator, for what purposes would you choose the Identity Management installation option while installing OracleAS Infrastructure? (Choose all that apply.)

- A. to create a new database and populate it with OracleAS Metadata Repository
- B. to configure Oracle Internet Directory against a remote OracleAS Metadata Repository
- C. to install and use additional OracleAS Metadata Repository with existing Identity Management components
- D. to install additional OracleAS Single Sign-On and Oracle Delegated Administration Services components against an existing Oracle Internet Directory

**Answer: B, D**

**Question: 103**

You want to stop the OracleAS Infrastructure instance on which you are working.

Which is the appropriate method to do it?

- A. Stop the database listener and then OracleAS Infrastructure instance processes.
- B. Stop the metadata repository database, database listener, and then Application Server Control.
- C. Stop the Application Server Control, OracleAS Infrastructure instance processes, metadata



Exam Name:	Oracle Application Server 10g: Administration I		
Exam Type:	Oracle		
Exam Code:	1Z0-311	Total Questions:	131

repository database, and then database listener.

- D. Stop the database listener, metadata repository database, OracleAS Infrastructure instance processes, and then Application Server Control.

**Answer: C**

**Question: 104**

Identify the characteristics of OracleAS Single Sign-On. (Choose all that apply.)

- A. It is a component of the OracleAS middle-tier installation.
- B. It uses Oracle Internet Directory (OID) to authenticate users.
- C. It uses Single Sign-On SDK to enable the single sign-on functionality.
- D. It is a component of OracleAS Identity Management infrastructure.
- E. It uses the mod\_osso module to provide authentication to the OracleAS applications.

**Answer: B, D, E**

**Question: 105**

You are asked to improve the performance of the Web site.

As an Oracle Application Server administrator, you created a caching rule for the Web site with the following regular expression in the URL Expression field:

`^/pls/us/.*\.pdf$`

Which description about the substrings matches the expression?

- A. all the files in the /pls/us directory except PDF files
- B. all PDF files under /pls/us or any of its subdirectories
- C. all the files in /pls/us and only PDF files from the root directory

<b>Exam Name:</b>	<b>Oracle Application Server 10g: Administration I</b>		
<b>Exam Type:</b>	<b>Oracle</b>		
<b>Exam Code:</b>	<b>1Z0-311</b>	<b>Total Questions:</b>	<b>131</b>

D. all the directories containing /pls/us as a subdirectory and PDF files in it

**Answer: B**

**Question: 106**

You are trying to access a partner application on Oracle Application Server. You are authenticated and have access to the application. When you request another partner application in the same session, the login page is not displayed, but you get access to the application.

What could be the reason?

- A. Web server uses the URL stored in the Single Sign-On database.
- B. Web server uses the .htaccess file to authenticate the user.
- C. Web server uses the mod\_osso cookie to authenticate the user.
- D. Web server uses the global data source created for the application.

**Answer: C**

**Question: 107**

To create a data source, you performed the following steps:

1. Opened the Application Server Control Console and clicked the bi.edtdr6p1.us.oracle.com link (instance in the farm)
2. Opened the OC4J Home page and clicked the Administration tab in the page
3. In the Application Defaults section, used the Data Sources page to create the data source

Which statement regarding the data source is true?

- A. This data source is local to a particular application.
- B. This data source cannot be used for the new applications that you deploy in future.
- C. This is a global data source and can be used by all applications deployed in all Oracle Application Server Containers for J2EE (OC4J) instances.
- D. This is a global data source and can be used by all applications deployed in this OC4J instance.

**Answer: D**

**Question: 108**

You created a user for OracleAS Portal instance by using the Portal User Profile portlet.

Which database schema would the user map to by default?

- A. PORTAL
- B. PORTAL\_APP
- C. PORTAL\_DEMO
- D. PORTAL\_PUBLIC
- E. AURORA\$ORB\$UNAUTHENTICATED

**Answer: D**

**Question: 109**

Under which three circumstances would you manually register mod\_osso by using the single sign-on registration tool? (Choose three.)

- A. The osso.conf file needs to be re-created.

<b>Exam Name:</b>	<b>Oracle Application Server 10g: Administration I</b>		
<b>Exam Type:</b>	<b>Oracle</b>		
<b>Exam Code:</b>	<b>1Z0-311</b>	<b>Total Questions:</b>	<b>131</b>

- B. The single sign-on usernames and passwords are changed.
- C. Secure sockets layer (SSL) is enabled on the single sign-on server after Oracle Application Server is installed.
- D. The new data source is assigned to the application that uses single sign-on for authentication.
- E. The host name and port number of Oracle HTTP Server are changed after Oracle Application Server is installed.

**Answer: A, C, E**

**Question: 110**

You need to increase the heap size allocated for the OC4J\_HR OC4J instance.

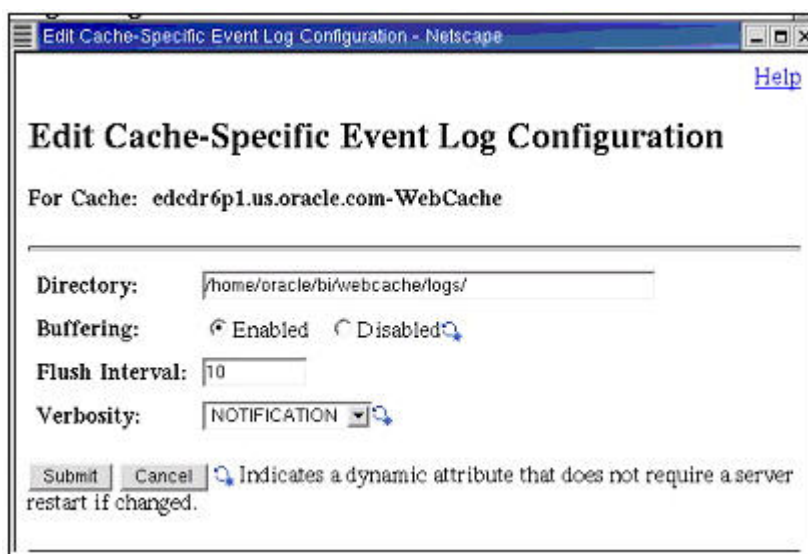
What would you do?

- A. modify entries in the ejb-jar.xml configuration file
- B. modify entries in the application.xml configuration file
- C. modify entries in the internal\_settings.xml configuration file
- D. modify the Java options by using Application Server Control Console

**Answer: D**

**Question: 111**

As an Oracle Application Server administrator, you configured the event log as shown in the Exhibit.



Which statement is true?

- A. OracleAS Web Cache flushes contents of the event log file every 10 minutes.
- B. OracleAS Web Cache flushes contents of the event log file every 10 seconds.
- C. OracleAS Web Cache writes buffered events to the event log file at least every 10 seconds.
- D. OracleAS Web Cache flushes the buffer to ensure that a user always gets the events that occurred during the last 10 minutes.

**Answer: C**

**Question: 112**

Exam Name:	Oracle Application Server 10g: Administration I		
Exam Type:	Oracle		
Exam Code:	1Z0-311	Total Questions:	131

View the Exhibit and examine the Basic Content Invalidation window, which is used for invalidation, in OracleAS Web Cache Manager.

As an Oracle Application Server administrator, what would you do to invalidate objects according to information provided in Basic Content Invalidation?

- A. click Submit and apply the changes
- B. click Submit; the changes take effect
- C. click Submit and restart HTTP Server
- D. click Submit and restart the Web Cache

**Answer: B**

**Question: 113**

As an Oracle Application Server administrator, you decide to set the UseCanonicalName directive to OFF in Oracle HTTP Server.

What effect does this setting cause on the server?

- A. The server is forced to use Single Sign-On (SSO).
- B. The server returns an error to every request that comes from the client.
- C. The server uses the host name and port values set in ServerName and Port in the httpd.conf file.

<b>Exam Name:</b>	<b>Oracle Application Server 10g: Administration I</b>		
<b>Exam Type:</b>	<b>Oracle</b>		
<b>Exam Code:</b>	<b>1Z0-311</b>	<b>Total Questions:</b>	<b>131</b>

D. The server uses the host name and port that the user specifies while redirecting the URL to the same server

**Answer: D**

**Question: 114**

View the Exhibit and examine the contents of the portlist.ini file.

```
[System]
Host Name = edtdr6p1.us.oracle.com

[Ports]
Oracle HTTP Server port = 7777
Oracle HTTP Server Listen port = 7777
Oracle HTTP Server SSL port = 4443
Oracle HTTP Server Listen (SSL) port = 4443
Oracle HTTP Server Diagnostic port = 7200
Application Server Control RMI port = 1850
Oracle Notification Server Request port = 6003
Oracle Notification Server Local port = 6100
Oracle Notification Server Remote port = 6200
Java Object Cache port = 7010
Log Loader port = 44000
DCM Java Object Cache port = 7101
Oracle Management Agent port = 1830
Application Server Control port = 1810
Oracle HTTP Server Listen port = 7777
Oracle HTTP Server Listen (SSL) port = 4443
Oracle Internet Directory port = 3060
Oracle Internet Directory (SSL) port = 3131
Oracle Net Listener = 1521
Oracle Certificate Authority SSL Server Authentication port = 4400
Oracle Certificate Authority SSL Mutual Authentication port = 4401
[oracle@EDTDR6P1 install]$
```

Which two statements regarding the portlist.ini file are true? (Choose two.)

- A. It is managed by Oracle Enterprise Manager (OEM).
- B. It is available only on the host in which Portal and Wireless is installed.
- C. It is available only on the host in which OracleAS Infrastructure is installed.
- D. It contains port numbers reserved for all the components during installation.
- E. It is not automatically updated if you change the port number of a component after installation.

**Answer: D, E**

**Question: 115**

You are accessing a partner application on Oracle Application Server. You are authenticated and have got access to the application. You have also opened a couple of other partner applications in the same session.

Which statement is true if you log out from a partner application?

- A. You will be signed off from all the partner applications.
- B. You will be signed off only from the application from which you logged out.
- C. You will be prompted to log out from each application that you connected to.
- D. You will receive an error if the partner application from which you logged out is not the first

Exam Name:	Oracle Application Server 10g: Administration I		
Exam Type:	Oracle		
Exam Code:	1Z0-311	Total Questions:	131

partner application started.

**Answer: A**

**Question: 116**

Exhibit:

ORACLE Enterprise Manager 10g  
Application Server Control

Farm > Application Server: bi.edttr6p1.us.oracle.com >

Web Cache

Page 1

Home Performance Administration

Site: All Sites Go

All Sites

Requests

Current Per Second	0.00
Average Per Second	0.00
Maximum Per Second	31.00
Total Requests	122,790
Current Origin Server Backlog	0
Maximum Origin Server Backlog	0

Related Links: [Origin Servers](#), [Popular Requests](#)

Errors

Network Errors	
Site Busy Errors	
Default ESI Fragment Served	
ESI Exception Not Caught	
Total Errors	

Which requests would be found in the Popular Requests page?

- A. most popular requests for the compressed documents in the cache
- B. most popular requests received by the cache since the cache was last started
- C. most popular requests received by the cache since the cache was first started
- D. most popular requests for the documents that have expired or have been invalidated

**Answer: B**

**Question: 117**

View the Exhibit to confirm that OID system component is down.

System Components				
<a href="#">Enable/Disable Components</a> <a href="#">Configure Component</a> <a href="#">Create OC4J Inst</a>				
<a href="#">Start</a> <a href="#">Stop</a> <a href="#">Restart</a> <a href="#">Delete OC4J Inst</a>				
Select All   Select None				
Select Name	Status	Start Time	CPU Usage (%)	Memory Usage
<input type="checkbox"/> HTTP_Server	↑	Dec 13, 2004 4:09:08 AM	0.30	
<input type="checkbox"/> my_OC4J	↑	Dec 13, 2004 4:09:14 AM	0.00	
<input type="checkbox"/> OC4J_SECURITY	↑	Dec 13, 2004 4:09:14 AM	0.00	
<input type="checkbox"/> ora	↑	Dec 13, 2004 4:09:14 AM	0.00	
<input type="checkbox"/> OID	↓	Unavailable	Unavailable	Unavail
<input type="checkbox"/> Single Sign-On:oraesa	↑	N/A	N/A	
<input type="checkbox"/> Management	↑	Dec 13, 2004 4:08:43 AM	2.45	1



<b>Exam Name:</b>	<b>Oracle Application Server 10g: Administration I</b>		
<b>Exam Type:</b>	<b>Oracle</b>		
<b>Exam Code:</b>	<b>1Z0-311</b>	<b>Total Questions:</b>	<b>131</b>

In your Oracle Enterprise Manager 10g Application Server Control, you find that the Oracle Internet Directory (OID) system component is currently down and you are not able to use the directory services that OID provides.

Which options would you use to start the OID system component? (Choose all that apply.)

- A. the emctl utility
- B. the dcmctl utility
- C. the opmnctl utility
- D. Oracle Enterprise Manager 10g Application Server Control

**Answer: C, D**

**Question: 118**

Some of the portal users informed you that they are able to open the SALES portal page but a portlet is not visible on the portal page. The portlet was visible the previous day. Moreover, the privileges assigned to the portal users were not changed.

What could be the reason for the portlet not being visible? (Choose two.)

- A. The web cache is not cleared.
- B. The portlet data source has become invalid.
- C. The connection entries in the dads.conf file are modified.
- D. The status of the associated portlet provider is set to offline.

**Answer: B, D**

**Question: 119**

You deploy a Web application with the following details:

WAR file name: techmac.war  
Host name: edtdr5p1.us.oracle.com  
Application Server Control Port: 1810  
OC4J Instance name: techOC4J  
Oracle HTTP Server Listener port: 7777

You executed the following command to deploy a Web application:

```
dcmctl deployApplication -file techmac.war -a techmac -co techOC4J -rc /tech/techmac
```

Which URL would you use to access the Web module?

- A. http://edtdr5p1.us.oracle.com/techmac
- B. http://edtdr5p1.us.oracle.com/tech/techmac
- C. http://edtdr5p1.us.oracle.com:1810/tech/techmac
- D. http://edtdr5p1.us.oracle.com:7777/tech/techmac
- E. http://edtdr5p1.us.oracle.com/techOC4J/tech/techmac
- F. http://edtdr5p1.us.oracle.com:1810/techOC4J/tech/techmac

**Answer: D**

**Question: 120**



<b>Exam Name:</b>	<b>Oracle Application Server 10g: Administration I</b>		
<b>Exam Type:</b>	<b>Oracle</b>		
<b>Exam Code:</b>	<b>1Z0-311</b>	<b>Total Questions:</b>	<b>131</b>

You are required to ensure that the OC4J\_MyApp instance does not appear in the System Components list on Application Server Control Console, and must not be a part of the opmnctl status command output.

What would you do?

- A. stop the OC4J\_MyApp OC4J instance by using Application Server Control
- B. disable the OC4J\_MyApp OC4J instance by using Application Server Control
- C. stop the OC4J\_MyApp OC4J instance by using the opmnctl command-line utility
- D. manually delete the OC4J\_MyApp OC4J instance name from the opmn.xml configuration file

**Answer: B**

**Question: 121**

You added a new portlet to an existing provider. The provider name is User Data. When you try to add the same portlet to the NORTH\_SALES portal page, you notice that the portlet is not available and is not listed in the Available Portlets page in the portlet repository.

Which two actions could you perform to view the newly added portlet? (Choose two.)

- A. refresh the portlet repository
- B. refresh the User Data provider
- C. refresh the NORTH\_SALES portal page
- D. refresh portal objects as per the directions given in the portlet repository refresh log
- E. refresh the portal page group to which the NORTH\_SALES portal page belongs

**Answer: A, B**

**Question: 122**

Which option would you use to restrict Oracle HTTP Server (OHS) users from writing to the files in \$ORACLE\_HOME?

1. Change the Group directive in the httpd.conf file to the group of a non-root, non-oracle user.
2. Create a new operating system (OS) user and make it a member of the same group as the Oracle user, and then change the User directive in the httpd.conf file.
3. Create a new OS user and make it a member of the same group as the root user, and then change the User directive in the httpd.conf file.
4. Create a new OS user and make it a member of the same group as a non-root, non-oracle user, and then change the User directive in the httpd.conf file to point to the new user.
5. Change the AuthName directive in the httpd.conf file.
6. Change the VirtualHost directive in the httpd.conf file

- A. 4 only
- B. 2 only
- C. 3 only
- D. 5 only
- E. 1 and 5
- F. 2 and 5
- G. 2 and 6

**Answer: A**

**Question: 123**

You are working on an Oracle Application Server 10g installation.

<b>Exam Name:</b>	<b>Oracle Application Server 10g: Administration I</b>		
<b>Exam Type:</b>	<b>Oracle</b>		
<b>Exam Code:</b>	<b>1Z0-311</b>	<b>Total Questions:</b>	<b>131</b>

Which statements regarding the usage of the Oracle Process Manager and Notification Server (OPMN) command-line tool are true? (Choose two.)

- A. It can be used to manage OracleAS Metadata Repository.
- B. It can be used to restore an instance to a specific configuration.
- C. It can be used to determine the ports that are being used by some of the processes.
- D. It can be used to start or stop the Distributed Configuration Management (DCM) daemon.

**Answer: C, D**

**Question: 124**

You are working on the bi.edtdr5p1.us.oracle.com instance. You deployed a Java 2, Enterprise Edition (J2EE) application on an Oracle Application Server Containers for J2EE (OC4J) instance. You also configured the data source used by the application, which is mapped to an Oracle database . The new data source specification is added to the data-sources.xml file.

What would you do to make the new data source available for lookup?

- A. restart the OC4J server instance
- B. restart the Oracle database instance
- C. add the data source to the web.xml file also
- D. add the data source to the orion-web.xml file also
- E. restart the bi.edtdr5p1.us.oracle.com instance
- F. add the data source to the application.xml file also

**Answer: A**

**Question: 125**

Which three pieces of information are included as part of a digital certificate? (Choose three.)

- A. certificate owner's public key
- B. certificate owner's private key
- C. name of the issuing certificate authority (CA)
- D. public key of the issuing certificate authority (CA)
- E. digital signature of the issuing certificate authority (CA)

**Answer: A, C, E**

**Question: 126**

You executed the following Distributed Configuration Management (DCM) command while managing the instance configuration:

```
[oracle@EDTDR5P1 bin]$ dcmctl resyncinstance -i instone
```

What would the command achieve?

- A. It rolls back any changes made to instone instance.
- B. It overwrites DCM repository with changes in the files system configuration.
- C. It resynchronizes the instone instance with the contents of the DCM repository.
- D. It resynchronizes the DCM repository by refreshing the configuration information in it.

**Answer: C**

**Question: 127**

Exam Name:	Oracle Application Server 10g: Administration I		
Exam Type:	Oracle		
Exam Code:	1Z0-311	Total Questions:	131

Which default user account can you use to log in to the portal to perform administration of Oracle Internet Directory (OID) and OracleAS Single Sign-On?

- A. system
- B. orcladmin
- C. ias\_admin
- D. portal\_admin

**Answer: B**

**Question: 128**

You are accessing a portal page from a thin client.

The \_\_\_\_\_ runs as a servlet on the middle-tier instance and retrieves the page metadata information from the portal repository.

- A. Parallel Page Engine (PPE)
- B. Container-managed persistence (CMP)
- C. Web Services Description Language (WSDL)
- D. Universal Description, Discovery, and Integration (UDDI)

**Answer: A**

**Question: 129**

While creating a group using Oracle Internet Directory (OID) Self Service Console, you selected the "Make this group privileged" option and Group Visibility as Public as shown in the Exhibit.

**Create Group**

**Basic Information**

\* Name: PRODGRP1

\* Display Name: PRODGRP1

\* Description: PRODGRP1

Group Visibility: ☒ Public ☐ Private

☒ Make this group privileged.

What would this result in?

- A. It will result into an error because this option cannot be selected if Group Visibility is Public.
- B. The group will be successfully created and you can selectively assign privileges to this group.
- C. The group will be successfully created and members of this group will have full Delegated Administration Services (DAS) privilege.
- D. The group will be successfully created and three privileges (allow group creation, Allow group editing, and Allow group deletion) will be granted by default.

**Answer: B**

<b>Exam Name:</b>	<b>Oracle Application Server 10g: Administration I</b>		
<b>Exam Type:</b>	<b>Oracle</b>		
<b>Exam Code:</b>	<b>1Z0-311</b>	<b>Total Questions:</b>	<b>131</b>

**Question: 130**

In your Oracle Application Server 10g installation, Delegated Administrative Service (DAS) is functional along with OracleAS Single Sign-On (SSO).

While accessing DAS, which source does DAS use to authenticate users?

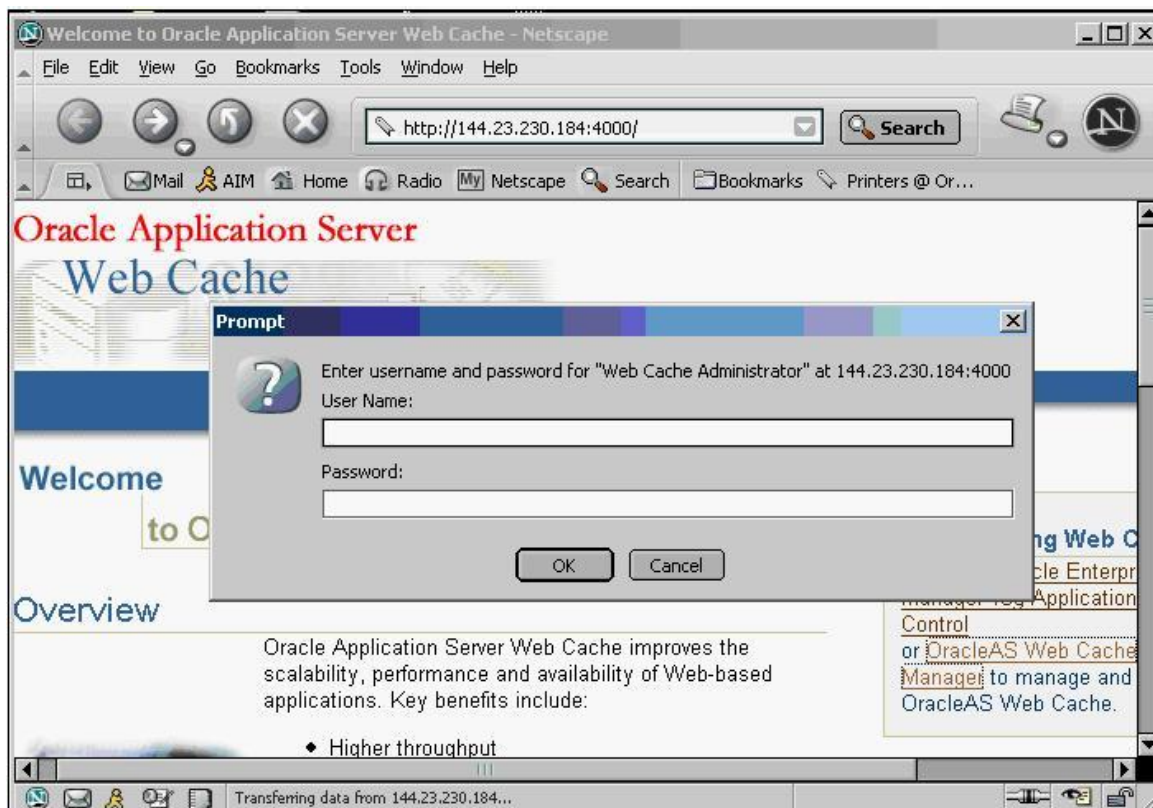
- A. the mod\_osso module
- B. Oracle Internet Directory
- C. Directory Integration Services
- D. OracleAS Certificate Authority

**Answer: B**

**Question: 131**

View the Exhibit.

You are asked to invalidate certain pages from the web cache. Which two user accounts would you use for logging in to the Web Cache Administration page to invalidate the pages? (Choose two.)



- A. root
- B. orcladmin
- C. ias\_admin
- D. administrator

**Answer: C, D**

**End of Document**